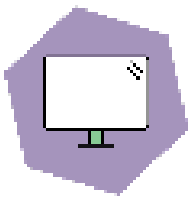




CERTIFICATE

TCO Certified, generation 9 for displays



Brand name: Samsung
Model name: S24C43*GA*

Certification date: 2023-06-12
Expiry date: 2025-06-12

Toward sustainable IT products

TCO Certified is the world-leading sustainability certification for IT products. It is an easy-to-use tool that helps you get environmental and social sustainability right. Criteria are mandatory, tough, and apply globally. Compliance is always independently verified.

For more information, visit tcocertified.com.

No. D923060430

Emma Hagrot
Certification process
TCO Development

This certificate confirms that a sample of the certified product, as stated herein, has been tested and approved as to its compliance with the criteria document valid at the time of the laboratory test. The certified product may, subject to the use of the unique combination of brand name, type/model name and sales name as stated in this certificate, be marked and sold with the TCO Certified label in accordance with the agreement.

Appendix to certificate No. D923060430

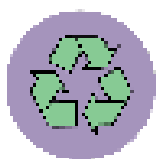


Brand name: Samsung

Model name(s):

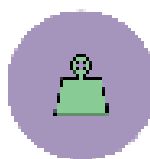
S24C43*GA*

Separate power supply: No



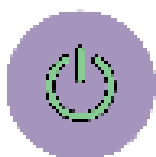
84%

Recycled plastic



4.9 kg

Total weight of product

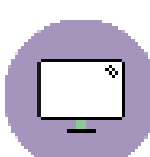


Energy consumption

On mode: 12.5 Watt

Sleep mode: 0.2 Watt

Off mode: 0.2 Watt



Aspect ratio: 16:9

Panel size: 23.8 in

Min. resolution width: 1920 px

Min. resolution height: 1080 px

Type of stand: Pivot

Sales name(s):

LS24C430GA, LS24C432GA, LS24C434GA, LS24C43DGA, S24C430GA, S24C432GA, S24C434GA, S24C43DGA

Model name type key(s)

1st * : "*" for 0, 2, 4, D

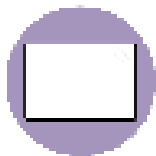
2nd * : "*" for U, I, N, L, K, C, E, M, W, A

Additional information:

For products delivered without stand; the emission criteria 4.2 and 4.3 is not covered.

Emma Hagrot
Certification process
TCO Development

Appendix to certificate No. D923060430



Panels:

TPV TPM238WF1-HCAP9B

A handwritten signature in blue ink, appearing to read 'Emma Hagrot'.

Emma Hagrot
Certification process
TCO Development