

# DescenderPro

## **CEILING RECESSED PROJECTION SCREEN INSTALLATION REINVENTED**

Tab-Tensioned | HD Progressive | 16K Ready | High Resolution | Up to 400 cm wide



**PROJECTA** 

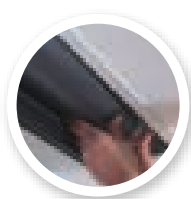
# DescenderPro

The DescenderPro is a ceiling recessed-projection screen that combines innovative installation features with a new motorized ALR surface option in addition to the high-resolution HD Progressive materials. Now you can just click-in the entire roller that includes the motor and screen surface after installation of the case. The new case design offers a clean finish without gaps or visible screws, after attaching the bottom plate to the case. The case and screen surface assembly can be ordered separately or complete.

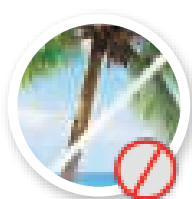
- 5 year warranty on the projection screen and motor
- No screws visible for a clean (aesthetic) installation
- Available with 16K ready HD Progressive for high resolution projection
- Available in a tab-tensioned (HD Progressive) and a non-tensioned version
- Roller with motor and screen surface can be easily 'clicked' in-place
- Available up to a width of 400 cm
- New motorized ALR option



**CLEAN AESTHETIC  
INSTALLATION**



**CLICK-IN ROLLER  
SYSTEM**



**16K READY HD  
PROGRESSIVE**



**5 YEAR  
WARRANTY**



**MOTORIZED  
PARALLAX ALR**

## Tensioned DescenderPro

### Available dimensions

Minimum width: 180 cm |  
Maximum width: | 400 cm

16:10

16:9

### High Resolution



**HD Progressive 0.6**  
Viewing Angle: 170°  
Gain: 0.6



**HD Progressive 1.1**  
Viewing Angle: 170°  
Gain: 1.1



**Dual Vision**  
Viewing Angle: 130°  
Gain: 0.9



**HD Progressive 0.9**  
Viewing Angle: 170°  
Gain: 0.9



**HD Progressive 1.3**  
Viewing Angle: 150°  
Gain: 1.3



**HD Progressive 1.1 Perf**  
Viewing Angle: 170°  
Gain: 1.1



**Parallax 0.8**  
Viewing Angle: 85°  
Gain: 0.8



**HD Progressive 1.1 Contrast**  
Viewing Angle: 120°  
Gain: 1.1

### Standard Resolution



**Matte White**  
Viewing Angle: 120°  
Gain: 1.0

## DescenderPro

### Available dimensions

Minimum width: 180 cm |  
Maximum width: | 400 cm

16:10

16:9

4:3

### Standard Resolution



**Matte White**  
Viewing Angle: 120°  
Gain: 1.0



**High Contrast**  
Viewing Angle: 100°  
Gain: 1.1



**Datalux**  
Viewing Angle: 70°  
Gain: 1.5

**PROJECTA**

REFLECTING YOUR VISION | milestone.com

T +31 (0) 495 580 840 E [emea.sales@milestone.com](mailto:emea.sales@milestone.com)

Franklinstraat 14, 6003 DK Weert, P.O. Box 191, 6000 AD Weert, The Netherlands

©2017 Milestone AV Technologies. 170128/17 Projecta is a registered trademark of Milestone AV Technologies. All other brand names or marks are used for identification purposes and are trademarks of their respective owners. All patents are protected under existing designations. Other patents pending.

A brand of **legrand**

**MILESTONE IS NOW LEGRAND**

AV Brands Chief | Da-Lite | Middle Atlantic | Projecta | Sanus | Vaddio