

Alienware 27 4K QD-OLED Gaming Monitor

AW2725Q

Teardown Instructions

Notes, cautions, and warnings

- ① **NOTE:** A NOTE indicates important information that helps you make better use of your product.
- △ **CAUTION:** A CAUTION indicates either potential damage to hardware or loss of data and tells you how to avoid the problem.
- ⚠ **WARNING:** A WARNING indicates a potential for property damage, personal injury, or death.

Contents

Safety Instructions	4
Before working inside your monitor	4
After working inside your monitor	4
Disassembly and reassembly	5
Recommended tools	5
Screw list	5
Stand	6
Removing the stand	6
Installing the stand	7
Back Cover	8
Removing the back cover	8
Installing the back cover	10
Metal shield	12
Removing the metal shield	12
Installing the metal shield	14
Switch board	16
Removing the switch board	16
Installing the switch board	18
DC-DC board	20
Removing the DC-DC board	20
Installing the DC-DC board	22
Interface board	24
Removing the interface board	24
Installing the interface board	26
Power board	27
Removing the power board	27
Installing the power board	29
Regulatory information	31
FCC notices (U.S. only) and other regulatory information	31
EU product database for energy label and product information sheet	31
Contacting Dell	32

Safety Instructions

Use the following safety guidelines to protect your monitor from potential damage and to ensure your personal safety. Unless otherwise noted, each procedure included in this document assumes that you have read the safety information that shipped with your monitor.

- ① **NOTE:** Before using the monitor, read the safety information that is shipped with your monitor and printed on the product. Keep the documentation at a secure location for future reference.
- ⚠ **WARNING: Use of controls, adjustments or procedures other than those specified in this documentation may result in exposure to shock, electrical hazards and/or mechanical hazards.**
- ⚠ **CAUTION: The possible long-term effect of listening to audio at high volume through the headphones (on monitor that support it) may cause damage to your hearing ability.**
- Place the monitor on a solid surface and handle it carefully.
 - The screen is fragile and can be damaged if dropped or hit with a sharp object.
 - Ensure that your monitor is electrically rated to operate with the AC power available in your location.
 - Keep the monitor in room temperature. Excessive cold or hot conditions can have an adverse effect on the QD-OLED of the display.
 - Connect the power cable from the monitor to a wall outlet that is near and accessible. See *Connecting the cables* in the *User's Guide* of AW2725Q.
- Do not place and use the monitor on a wet surface or near water.
- Do not subject the monitor to severe vibration or high impact conditions. For example, do not place the monitor inside a car trunk.
- Unplug the monitor when it is going to be left unused for an extended period.
- To avoid electric shock, do not attempt to remove any cover or touch the inside of the monitor.
- Read these instructions carefully. Keep this document for future reference. Follow all warnings and instructions marked on product.
- Certain monitors can be wall mounted using the VESA mount that is sold separately. Ensure to use the correct VESA specifications as mentioned in the wall mounting section of the User's Guide.

For information on safety instructions, see the Safety, Environmental and Regulatory Information (SERI) document that is shipped with your monitor.

Before working inside your monitor

Steps

1. Save and close all open files and exit all open applications.
2. Turn off your monitor.
3. Disconnect your monitor and all attached devices from their electrical outlets.
4. Disconnect all attached network devices and peripherals, such as keyboard, mouse, and dock from your monitor.
 - ⚠ **CAUTION: To disconnect a network cable, first unplug the cable from your monitor and then unplug the cable from the network device.**
5. Remove any media card and optical disc from your monitor, if applicable.

After working inside your monitor

⚠ **CAUTION: Leaving any loose or misplaced screws inside your monitor may severely damage it.**

Steps

1. Replace all screws and ensure that no stray screws remain inside your monitor.
2. Connect any external devices, peripherals, or cables you removed before working inside your monitor.
3. Replace any media cards, discs, or any other parts that you removed before working inside your monitor.
4. Connect your monitor and all attached devices to the respective electrical outlets.
5. Turn on your monitor.

Disassembly and reassembly

⚠ **CAUTION:** The information in this section is intended for authorized service technicians in the EMEA region. Dell prohibits users from disassembling the monitor, and any damage caused by unauthorized servicing will not be covered under the warranty.

ℹ **NOTE:** The images in this document may differ from your computer depending on the configuration you ordered.

Recommended tools

The procedures in this document may require the following tools:

- Phillips screwdriver #0
- Phillips screwdriver #2
- Plastic scribe







Screw list

ℹ **NOTE:** When removing screws from a component, it is recommended to note the screw type, the quantity of screws, and then place them in a screw storage box. This is to ensure that the correct number of screws and correct screw type is restored when the component is replaced.

ℹ **NOTE:** Some computers have magnetic surfaces. Ensure that the screws are not left attached to such surfaces when replacing a component.

ℹ **NOTE:** Screw color may vary with the configuration ordered.

Table 1. Screw list.

Component	Screw type	Quantity	Screw image
Back Cover	M4x10	4	
Metal shield	M3x3	4	
Interface board	M3x9	5	
Power board	M3x9	3	
Switch board	M3x9	1	
DC-DC board	M3x9	1	

Stand

Removing the stand

Prerequisites

1. Follow the procedure in [Before working inside your monitor](#).
 - ① **NOTE:** To prevent the LCD screen from scratches during stand removal, ensure the monitor is positioned on a soft surface and handled carefully.
 - ① **NOTE:** The following steps are specifically for removing the stand that is shipped with your monitor. If you are removing a stand that you purchased from any other source, follow the setup instructions that are included with the stand.

Steps

1. Place the monitor on a clean, flat surface on a soft cloth or cushion.
2. Press and hold the stand release button at the back of the display.



Figure 1. Removing the stand

3. Lift the stand assembly up and away from the monitor.



Figure 2. Removing the stand

Installing the stand

Steps

1. Align the two tabs on the upper part of the stand to the groove on the back of the display.
2. Slide and gently press the stand assembly until it snaps into place.



Figure 3. Installing the stand

Next steps

1. Follow the procedure in [After working inside your monitor.](#)

Back Cover

Removing the back cover

Prerequisites

1. Follow the procedure in [Before working inside your monitor.](#)
2. Remove the [stand](#).

Steps

1. Remove the four screws (M4x10) that secure the back cover to the display assembly.



Figure 4. Removing the back cover

2. Using a plastic scribe, pry the back cover starting from the edge of the monitor.



Figure 5. Removing the back cover

3. Lift the back cover partially from the bottom edge.
4. Disconnect the LED-board cable from the connector on the interface board.
5. Remove the back cover from the display assembly.



Figure 6. Removing the back cover

Installing the back cover

Steps

1. Connect the LED-board cable to the connector on the interface board.



Figure 7. Installing the back cover

2. Align the screw holes on the back cover with the screw holes on the monitor, and gently press along the sides to snap the back cover into place.



Figure 8. Installing the back cover

3. Replace the four screws (M4x10) to secure the back cover to the display assembly.



Figure 9. Installing the back cover

Next steps

1. Install the [stand](#).
2. Follow the procedure in [After working inside your monitor](#).

Metal shield

Removing the metal shield

Prerequisites

1. Follow the procedure in [Before working inside your monitor.](#)
2. Remove the [stand.](#)
3. Remove the [back cover.](#)

Steps

1. Disconnect the lens-board cable from the connector on the interface board.
2. Disconnect the control-board cable from the connector on the interface board.
3. Peel back the tape that secures the lens-board cable and the control-board cable to the metal shield.
4. Disconnect the two LVDS cables from the connectors on the interface board.
5. Peel back the tape that secures the fan cable to the display panel.
6. Disconnect the USB-board cable from the connector on the USB board.



Figure 10. Removing the metal shield

7. Remove the four screws (M3x3) that secure the metal shield to the middle frame.

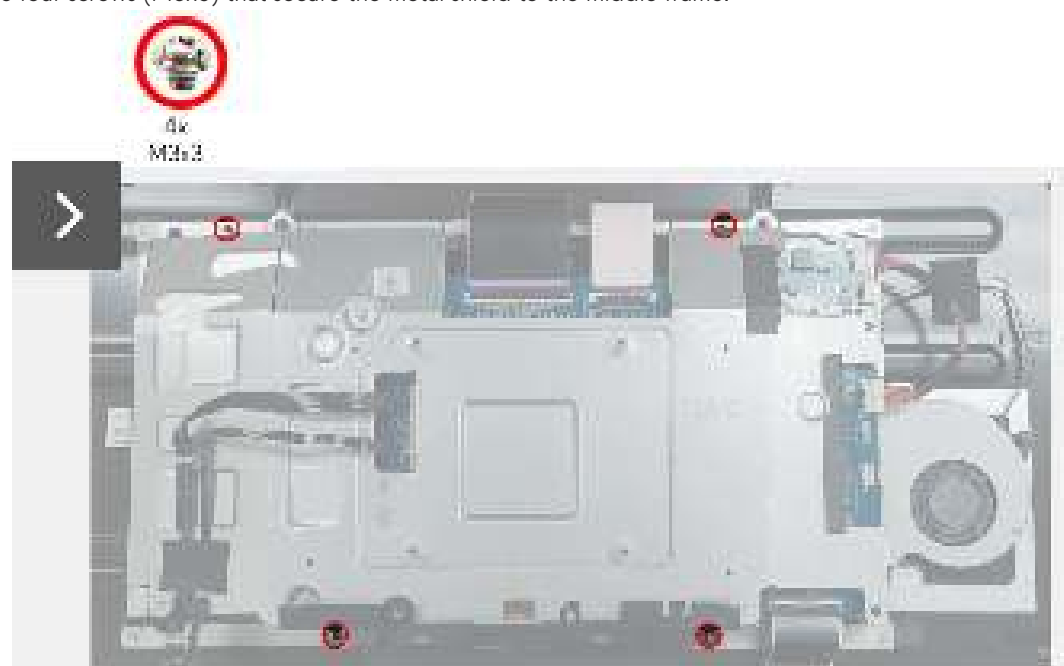


Figure 11. Removing the metal shield

8. Partially lift the metal shield and disconnect the switch-board cable from the connector on the display panel.
9. Disconnect the two LVDS cables from the connectors on the display panel.



Figure 12. Removing the metal shield

10. Remove the metal shield from the display panel.



Figure 13. Removing the metal shield

Installing the metal shield

Steps

1. Connect the two LVDS cables to the connectors on the display panel. Ensure that the LVDS cables are connected properly.
2. Connect the switch-board cable to the connector on the display panel.



Figure 14. Installing the metal shield

3. Align and place the metal shield on the display panel.
4. Replace the four screws (M3x3) to secure the metal shield to the middle frame.



Figure 15. Installing the metal shield

5. Connect the USB-board cable to the connector on the USB board.
6. Adhere the tape to secure the fan cable to the display panel.
7. Connect the two LVDS cables to the connectors on the interface board.
8. Connect the control-board cable to the connector on the interface board.
9. Connect the lens-board cable to the connector on the interface board.
10. Adhere the tape to secure the lens-board cable and the control-board cable to the metal shield.

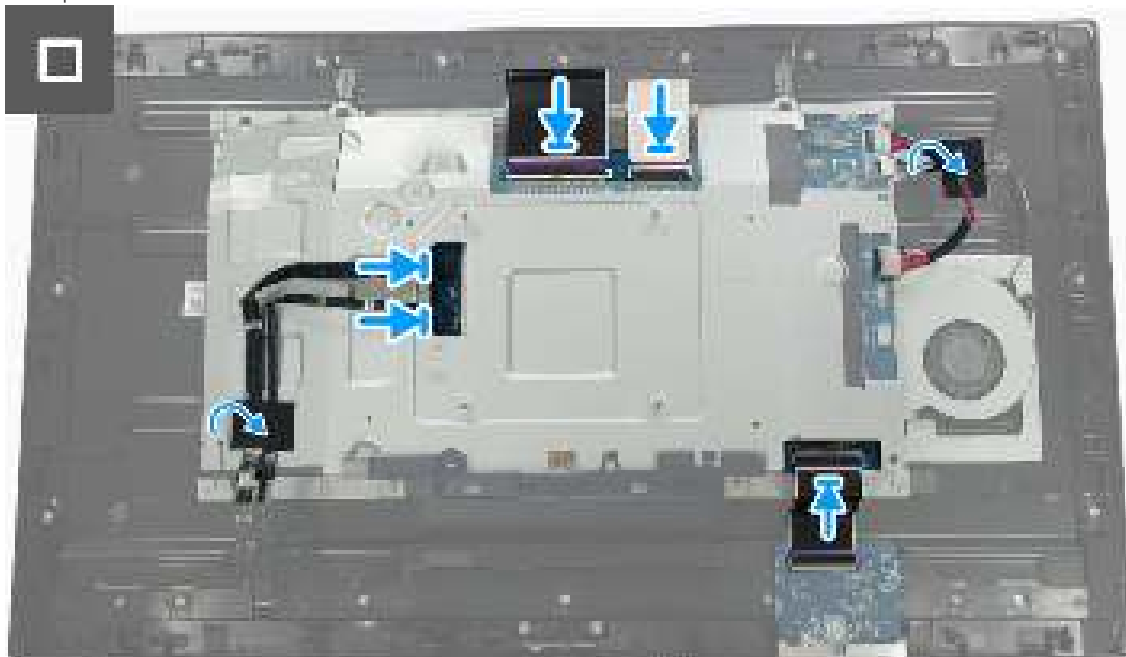


Figure 16. Installing the metal shield

Next steps

1. Install the [back cover](#).
2. Install the [stand](#).
3. Follow the procedure in [After working inside your monitor](#).

Switch board

Removing the switch board

Prerequisites

1. Follow the procedure in [Before working inside your monitor](#).
2. Remove the [stand](#).
3. Remove the [back cover](#).
4. Remove the [metal shield](#).

Steps

1. Lift the Mylar sheet from the power board.



Figure 17. Removing the switch board

2. Remove the screw (M3x9) that secures the switch board to the metal shield.



Figure 18. Removing the switch board

3. Lift and turn the switch board away from the metal shield.
4. Disconnect the power cable from the connector on the switch board.



Figure 19. Removing the switch board

5. Remove the switch board from the metal shield.

Installing the switch board

Steps

1. Connect the power cable to the connectors on the switch board.



Figure 20. Installing the switch board

2. Align and place the switch board in the slot on the metal shield.
3. Replace the screw (M3x9) to secure the switch board to the metal shield.



Figure 21. Installing the switch board

4. Align and place the Mylar sheet on the power board.



Figure 22. Installing the switch board

Next steps

1. Install the [metal shield](#).
2. Install the [back cover](#).
3. Install the [stand](#).
4. Follow the procedure in [After working inside your monitor](#).

DC-DC board

Removing the DC-DC board

Prerequisites

1. Follow the procedure in [Before working inside your monitor](#).
2. Remove the [stand](#).
3. Remove the [back cover](#).
4. Remove the [metal shield](#).
5. Remove the [switch board](#).

Steps

1. Turn over the metal shield to access the DC-DC board cable and disconnect the DC-DC board cable from the connector on the DC-DC board and the interface board.
2. Disconnect the fan cable from the connector on the interface board.

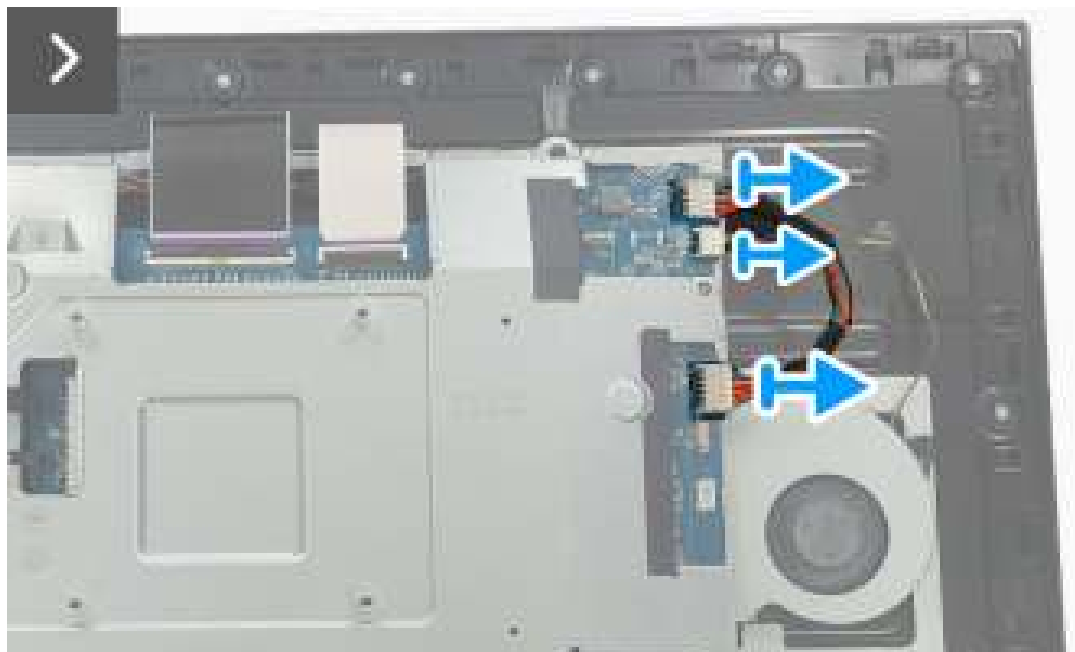


Figure 23. Removing the DC-DC board

3. Remove the screw (M3x9) that secures the DC-DC board to the metal shield.
4. Remove the spacer from the DC-DC board.



Figure 24. Removing the DC-DC board

5. Lift and turn the DC-DC board away from the metal shield.
6. Disconnect the power cable from the connector on the DC-DC board.



Figure 25. Removing the DC-DC board

7. Remove the DC-DC board from the metal shield.

Installing the DC-DC board

Steps

1. Connect the power cable to the connector on the DC-DC board.



Figure 26. Installing the DC-DC board

2. Align and place the DC-DC board in the slot inside the metal shield.
3. Place the spacer on the DC-DC board.
4. Replace the screw (M3x9) to secure the DC-DC board to the metal shield.

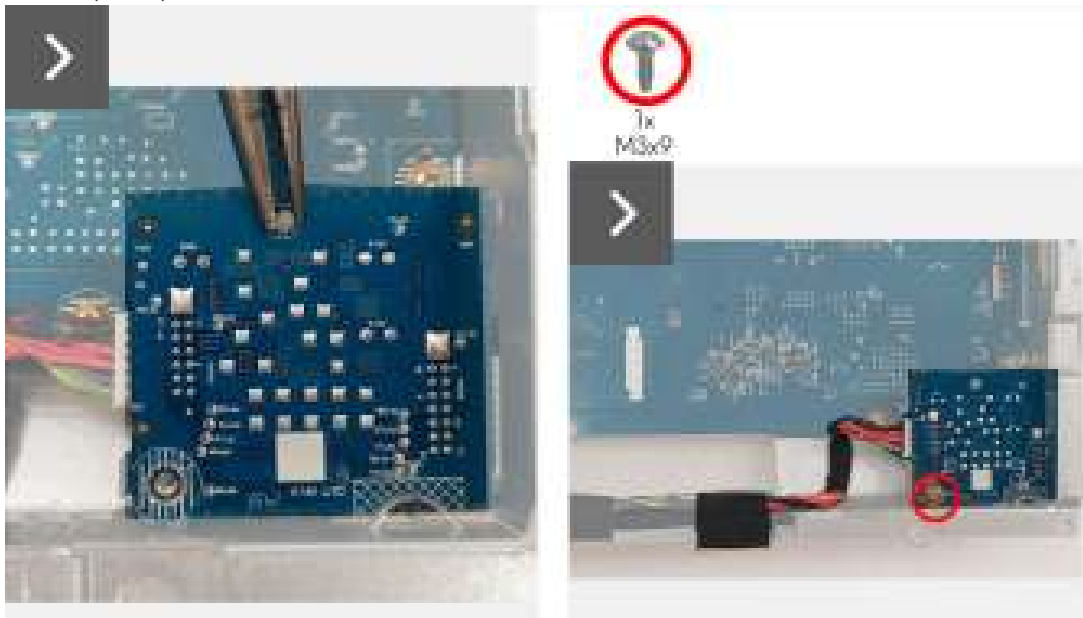


Figure 27. Installing the DC-DC board

5. Turn over the metal shield to access the fan cable and connect the fan cable to the connector on the interface board.
6. Connect the DC-DC board cable to the connector on the DC-DC board and the interface board.

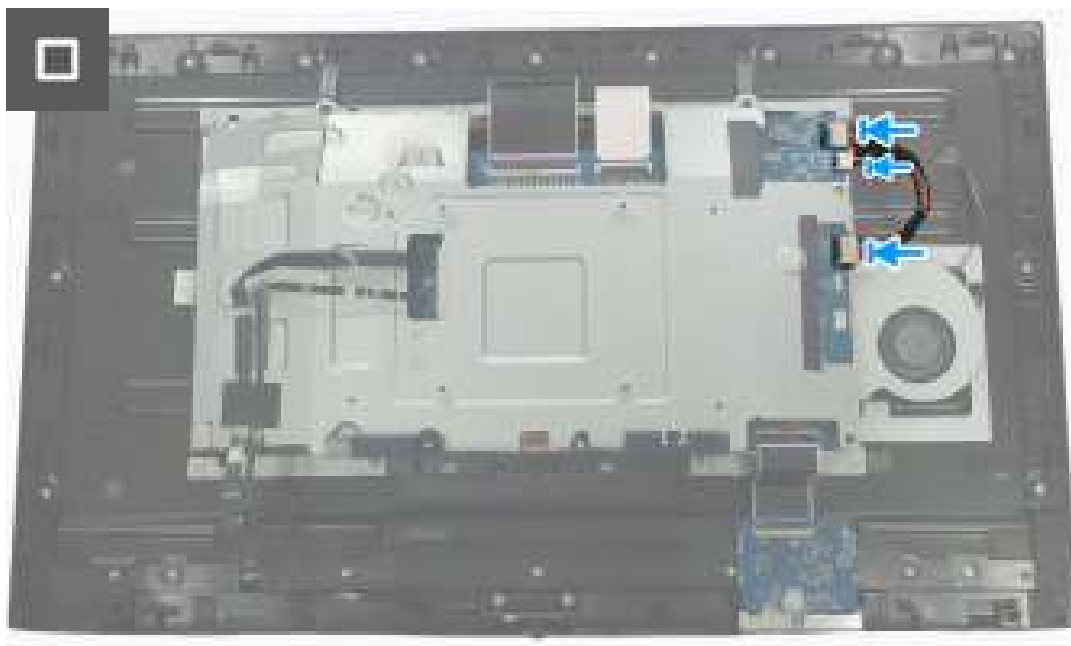


Figure 28. Installing the DC-DC board

Next steps

1. Install the [switch board](#).
2. Install the [metal shield](#).
3. Install the [back cover](#).
4. Install the [stand](#).
5. Follow the procedure in [After working inside your monitor](#).

Interface board

Removing the interface board

Prerequisites

1. Follow the procedure in [Before working inside your monitor.](#)
2. Remove the [stand.](#)
3. Remove the [back cover.](#)
4. Remove the [metal shield.](#)
5. Remove the [switch board.](#)
6. Remove the [DC-DC board.](#)

Steps

1. Remove the five screws (M3x9) that secure the interface board to the metal shield.
2. Lift the interface board from the metal shield.

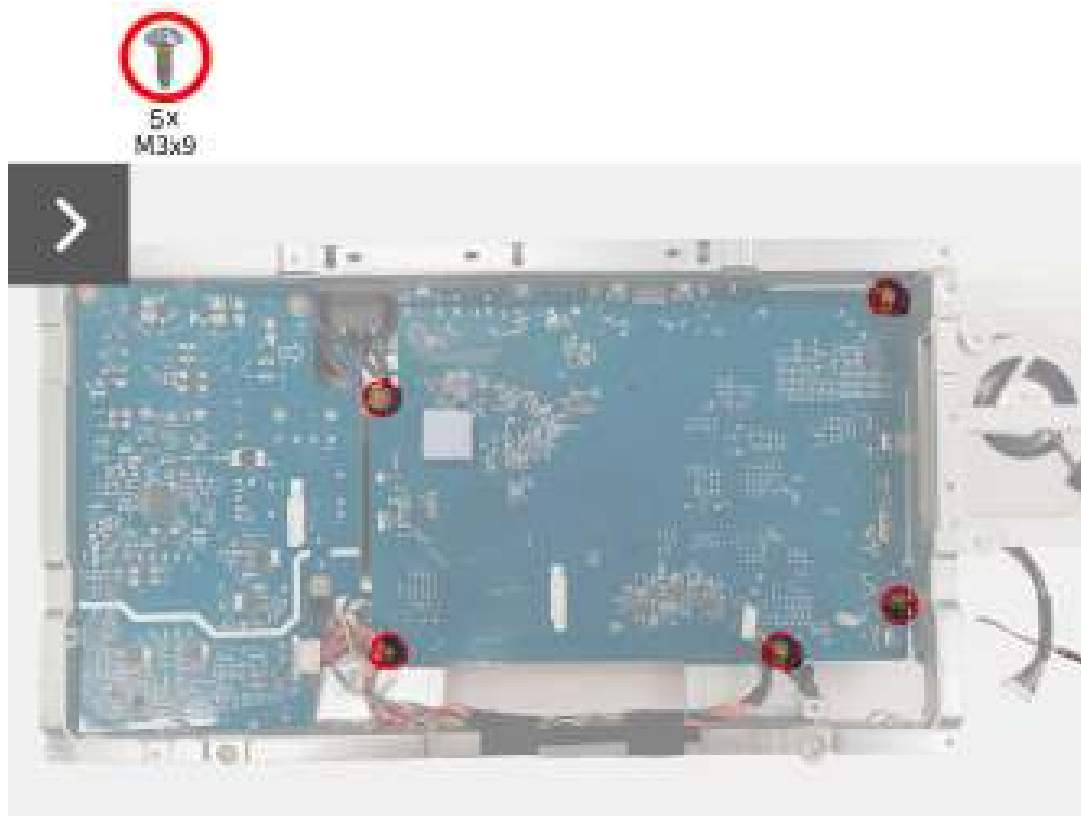


Figure 29. Removing the interface board

3. Remove the thermal pad from the interface board.
4. Remove the spacer from the interface board.

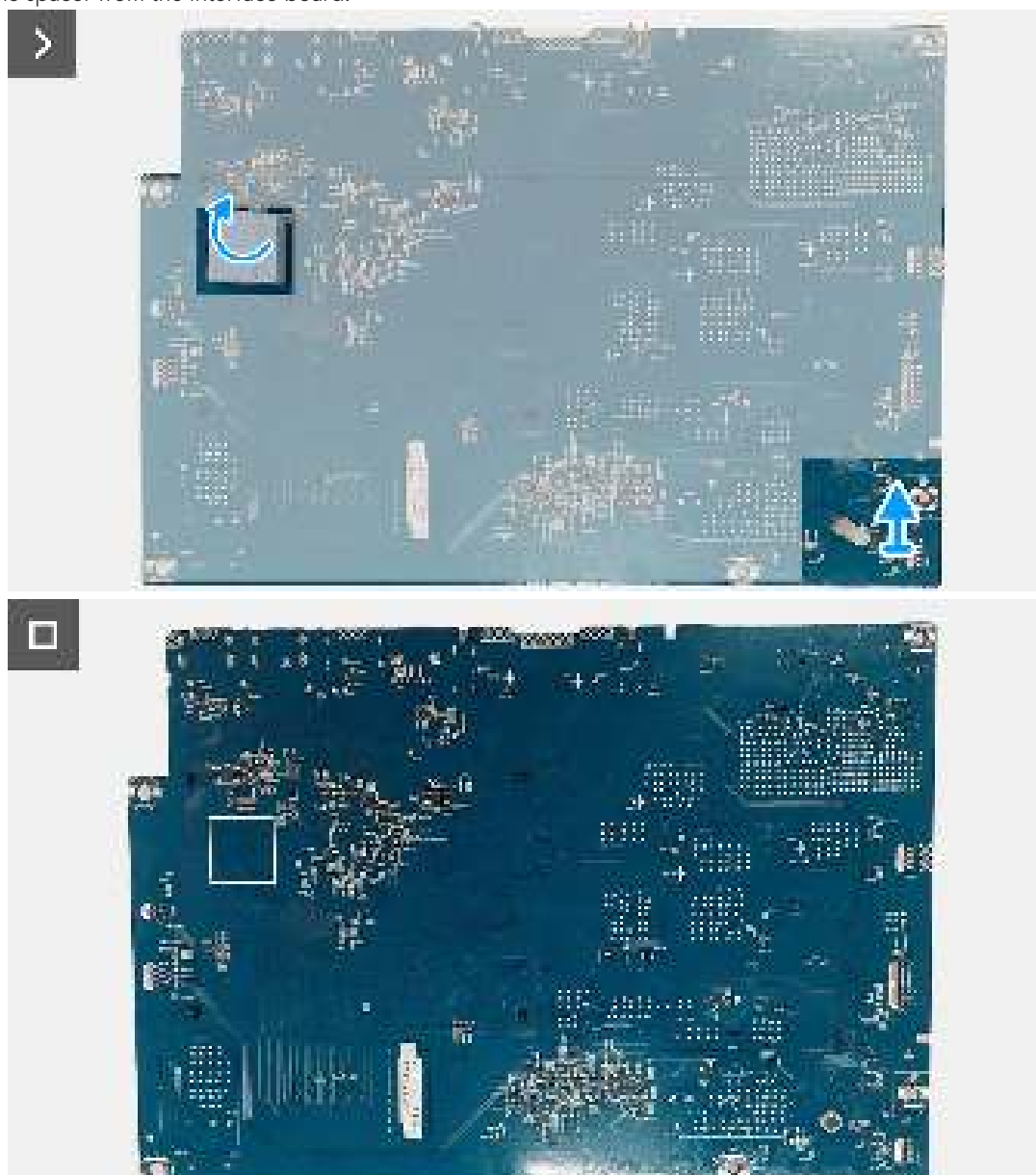


Figure 30. Removing the interface board

Installing the interface board

Steps

1. Adhere the thermal pad on the interface board.
2. Place the spacer on the interface board.

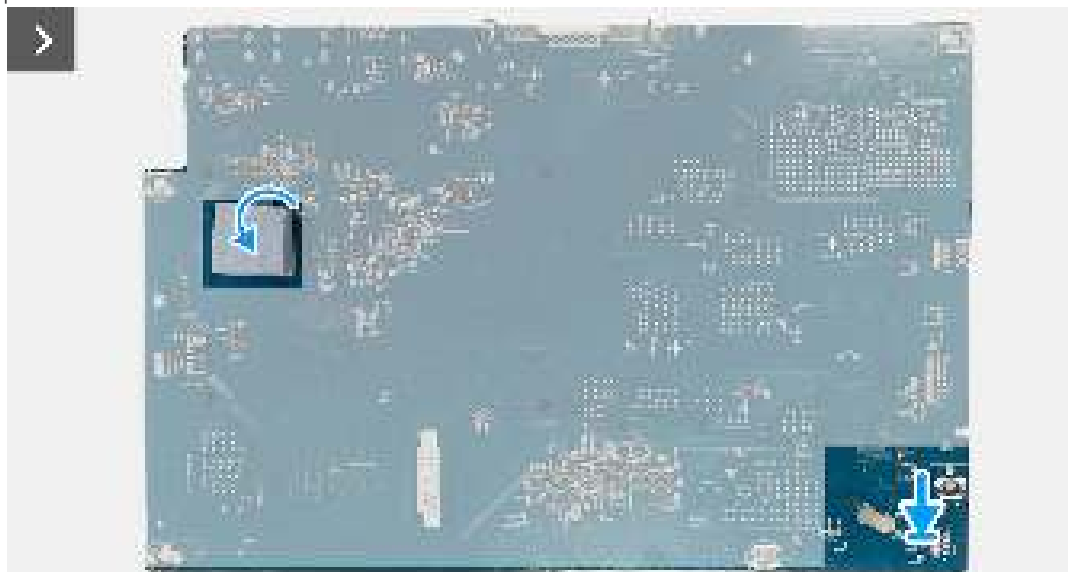


Figure 31. Installing the interface board

3. Align and place the interface board in the slot inside the metal shield.
4. Replace the five screws (M3x9) to secure the interface board to the metal shield.

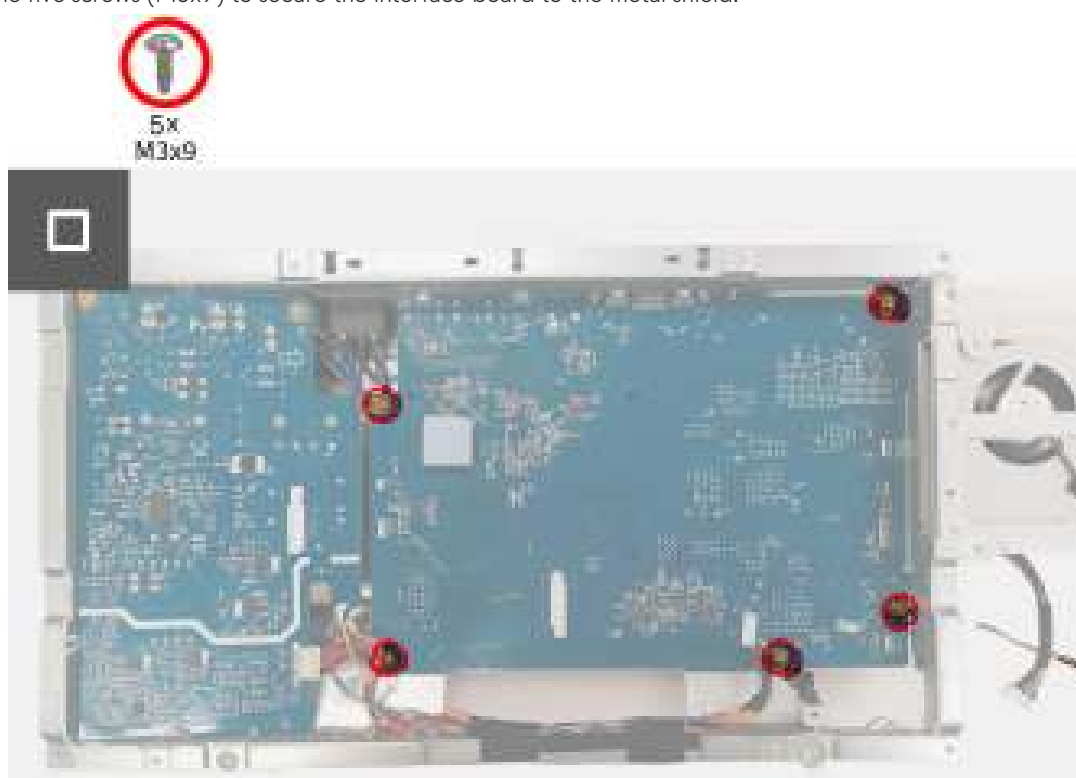


Figure 32. Installing the interface board

Next steps

1. Install the [DC-DC board](#).
2. Install the [switch board](#).
3. Install the [metal shield](#).
4. Install the [back cover](#).
5. Install the [stand](#).
6. Follow the procedure in [After working inside your monitor](#).

Power board

Removing the power board

Prerequisites

1. Follow the procedure in [Before working inside your monitor.](#)
2. Remove the [stand.](#)
3. Remove the [back cover.](#)
4. Remove the [metal shield.](#)
5. Remove the [switch board.](#)
6. Remove the [DC-DC board.](#)
7. Remove the [interface board.](#)

Steps

1. Remove the three screws (M3x9) that secure the power board to the metal shield.

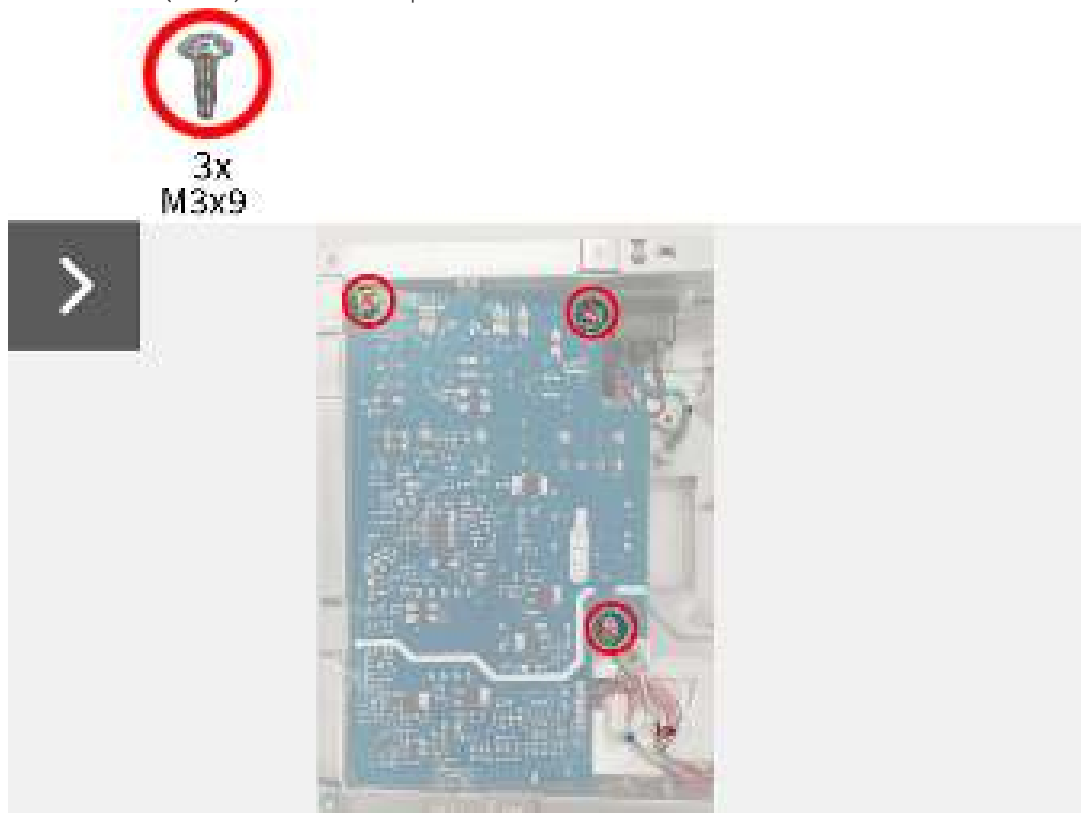


Figure 33. Removing the power board

2. Partially lift the power board from the metal shield.
3. Disconnect the AC-socket cable from the connector on the power board.

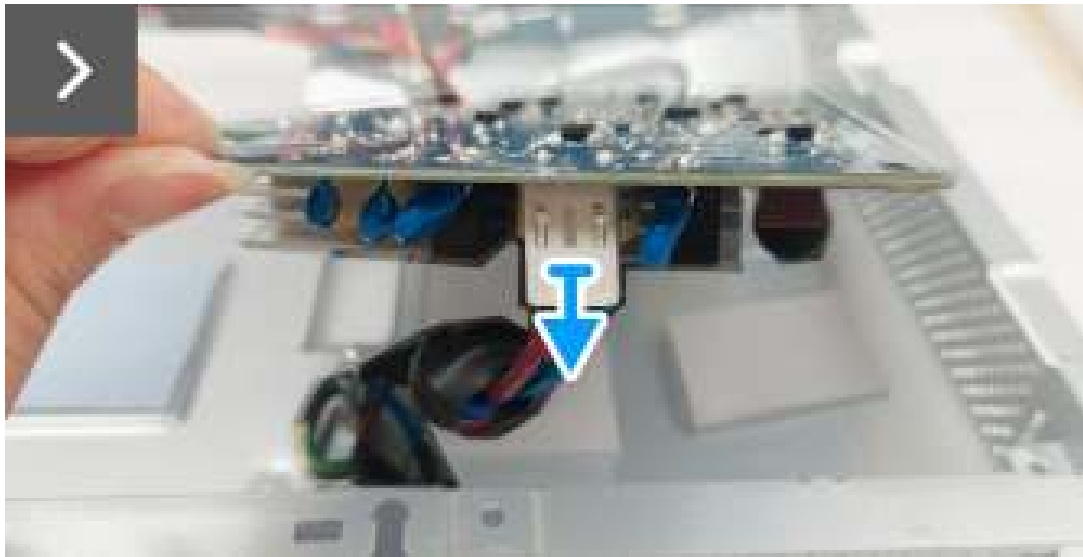


Figure 34. Removing the power board

4. Turn the power board to access the power cable and disconnect the power cable from the connector on the power board.
5. Remove the power board from the metal shield.



Figure 35. Removing the power board

Installing the power board

Steps

1. Connect the power cable to the connector on the power board.



Figure 36. Installing the power board

2. Turn the power board with the connectors facing down and connect the AC-socket cable to the connector on the power board.

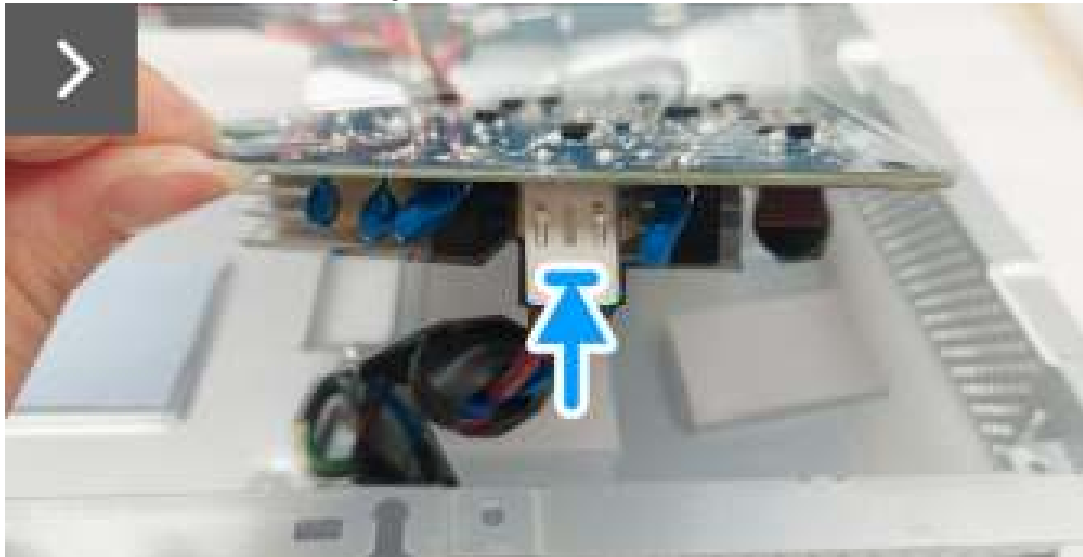


Figure 37. Installing the power board

3. Align and place the power board in the slot inside the metal shield.
4. Replace the three screws (M3x9) to secure the power board to the metal shield.

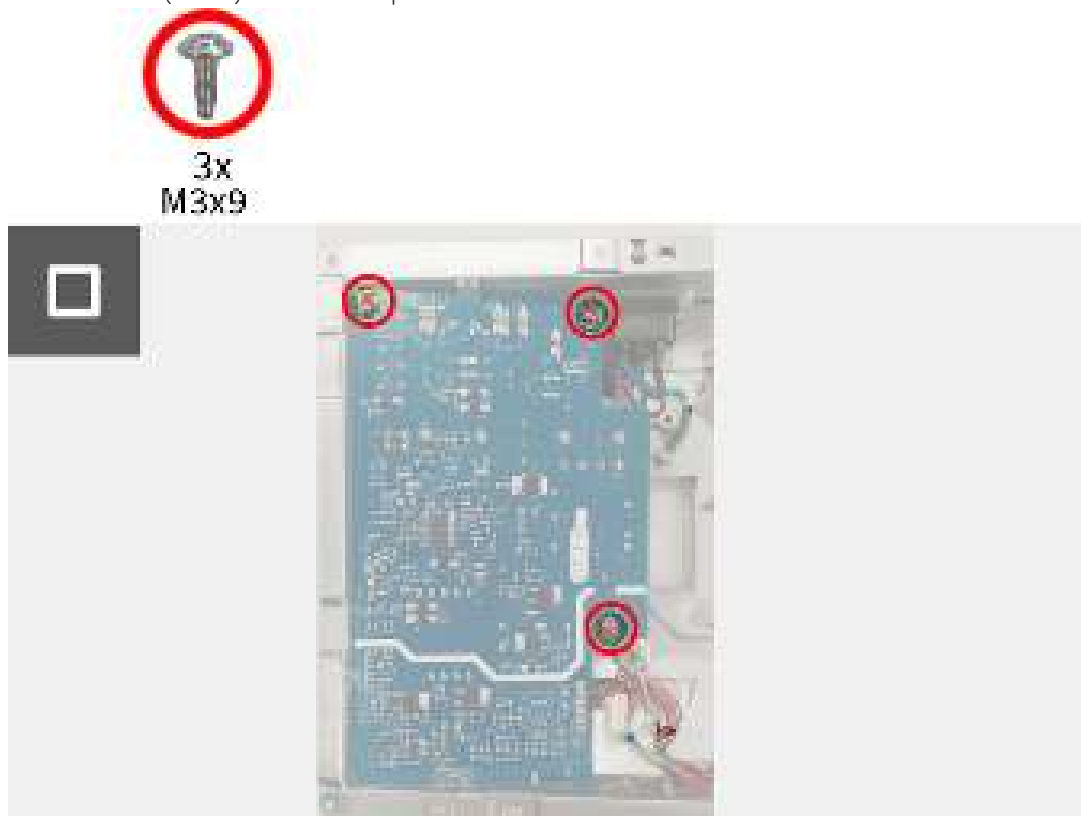


Figure 38. Installing the power board

Next steps

1. Install the [interface board](#).
2. Install the [DC-DC board](#).
3. Install the [switch board](#).
4. Install the [metal shield](#).
5. Install the [back cover](#).
6. Install the [stand](#).
7. Follow the procedure in [After working inside your monitor](#).

Regulatory information

FCC notices (U.S. only) and other regulatory information

For FCC notices and other regulatory information, see the regulatory compliance website located at [Dell Regulatory Compliance Home Page](#).

EU product database for energy label and product information sheet

AW2725Q: <https://eprel.ec.europa.eu/qr/2219070>

Contacting Dell

To contact Dell for sales, technical support, or customer service issues, see [Contact Support at Dell Support Site](#).

- ① **NOTE:** Availability varies by country, region, or product, and some services may not be available in your country.
- ① **NOTE:** If you do not have an active Internet connection, you can find contact information about your purchase invoice, packing slip, bill, or Dell product catalog.