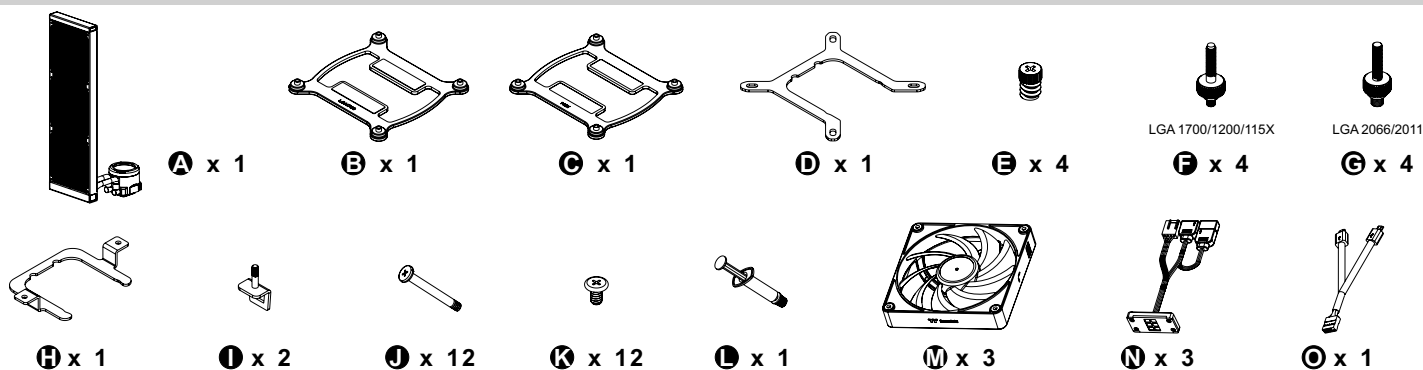
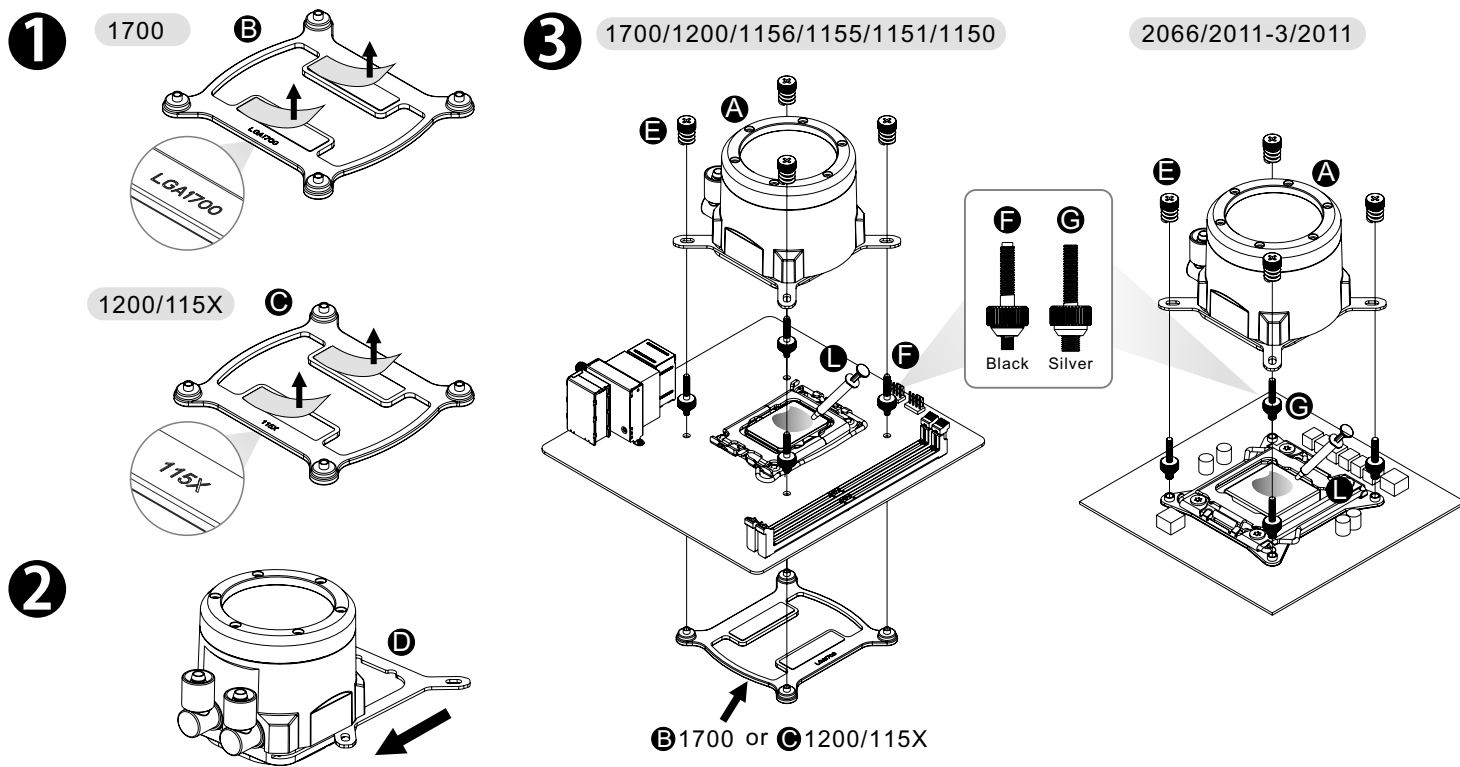




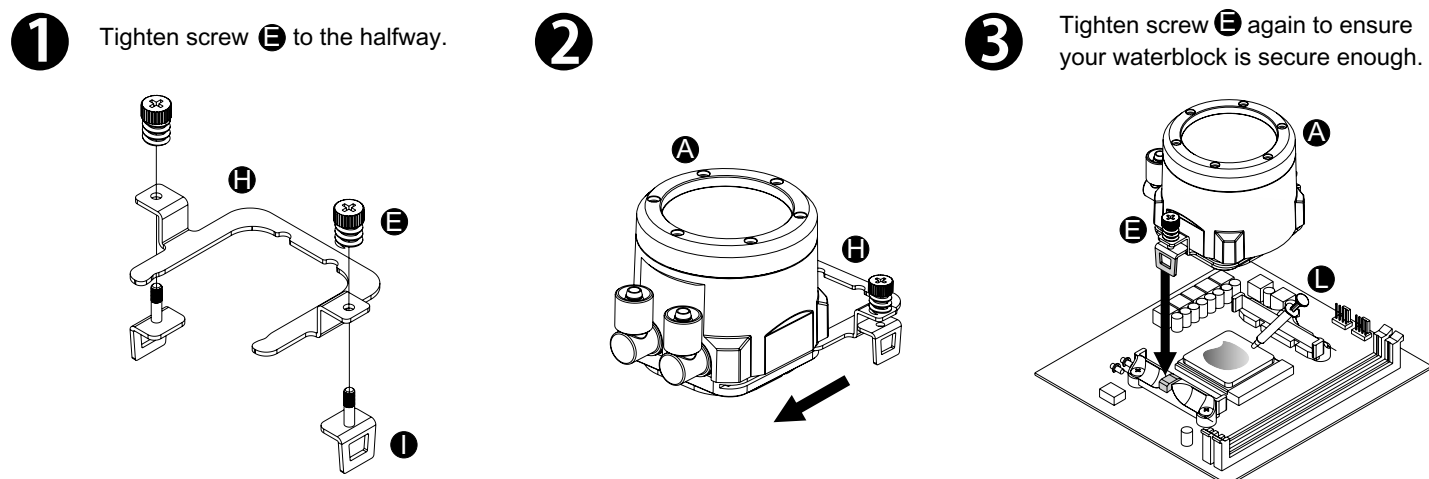
Parts List



Intel Installation Guide

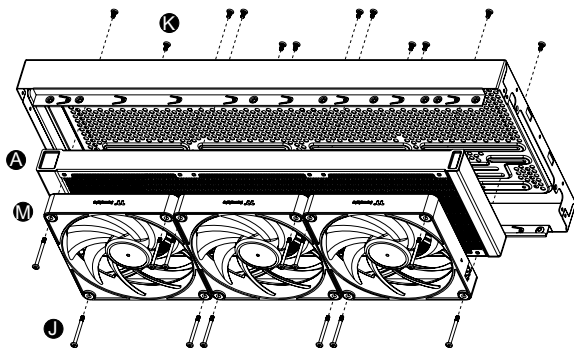


AMD Installation Guide

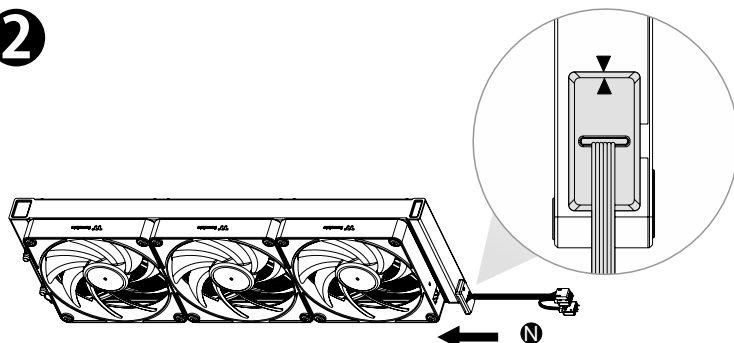


Installation Guide

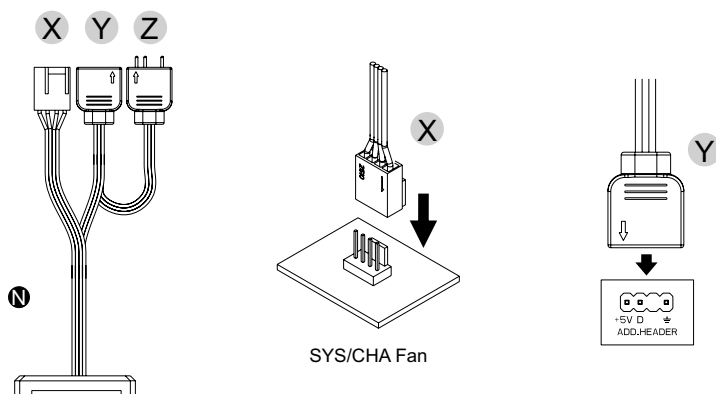
1



2



3

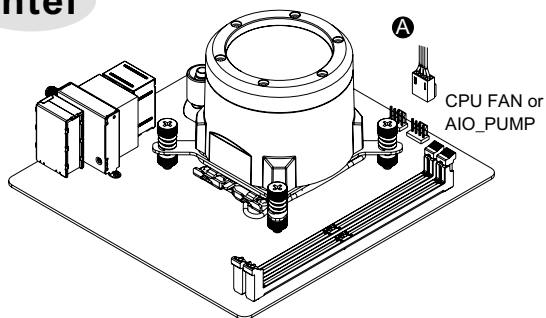


CAUTION

Please power off the PC and check the Positive and Negative ends on the connector before connecting the cable to mainboard. Connecting the wrong end can damage the fans.

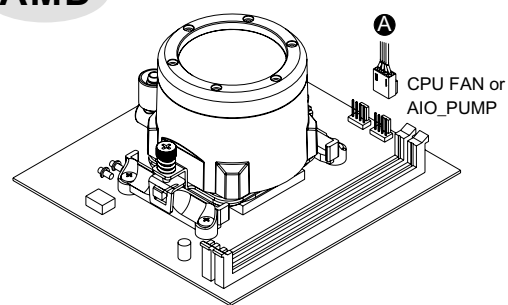
4

Intel



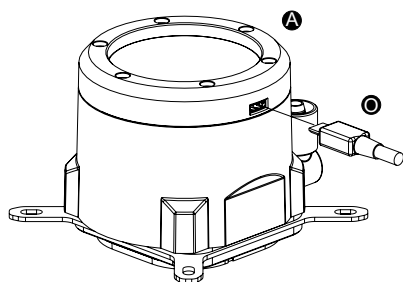
or

AMD

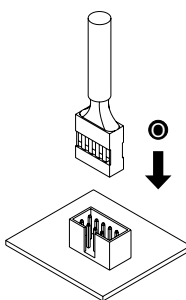


LCD Display Setup Guide

1



2



CAUTION

To control the LCD display by TT RGB PLUS Software, Please connect the water block and motherboard with cable P.