

ThinkVision P34w-20

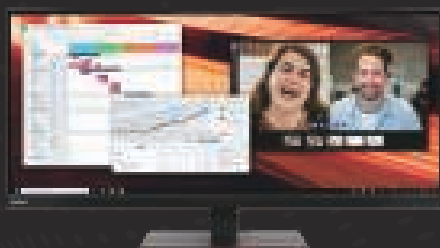
Wider in View. Broader in Use.

UPGRADE TO A PREMIUM VISUAL EXPERIENCE WITH AN EXTRA-WIDE PROFESSIONAL HUB MONITOR.

ThinkVision P34w-20 upgrades your view with a premium visual experience on a 34.14-inches curved screen with a WQHD 3440 x 1440 resolution for a wide-viewing In-Plane Switching panel that lets you see all the fine details and vibrant colors from any angle. With the P34w-20 you get true-to-life color accuracy, make multitasking a breeze with advanced tools for collaboration, and enhance workplace productivity and connectivity with the power of USB Type-C¹ capabilities. Never miss a shade with a 99% sRGB Delta E<2 for reliable color accuracy straight out of the box, while Natural Low Blue Light technology reduces harmful blue light emissions to optimize eye comfort without color distortion. Multitasking is key to boosting your workplace productivity, and the P34w-20 is built with efficiency in mind to better assist you whether you are in finance, creative or any industry. Expand your view with a 21:9 wide aspect ratio. The eKVM function lets you control and instantly switch between two sources with a single monitor, keyboard and mouse. While, with Lenovo-patented True Split⁴, you can view those two sources side-by-side on the same screen with PIP & PBP for unparalleled multitasking efficiency. You can even share your screen or just the half you want to. No matter the task, the P34w-20 delivers a smooth and premium experience with a one cable solution with USB Type-C¹ connectivity that can support up to 100W³ power delivery to allow the monitor to serve as a productivity hub while reducing clutter in your setup. Take full advantage of your monitor's capabilities with Lenovo ThinkColour² software to easily make display setting adjustments or customization for your on-the-job needs.

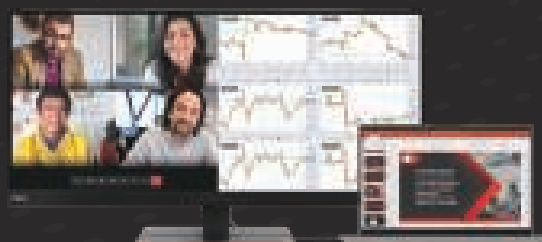


FEATURES OF THINKVISION P34w-20 MONITOR



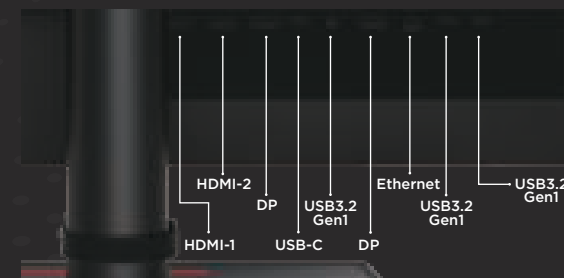
An eye – and ear – for detail

The P34w-20 kicks your work up a notch with outstanding visuals to show accurate colors from any angle. With WQHD 3440 x 1440 resolution, the monitor helps you capture even the smallest details while seeing true-to-life color with a 99% sRGB color calibration Delta E<2. Designed to impress, the 2 x 3W built-in speakers offer immersive audio that is true to your ears. The P34w-20 is also created with your health and comfort in mind, with eye-care and Natural Low Blue Light technology to reduce harmful high energy blue light emissions. Adjust the monitor height up to 150 mm to suit your ideal working style or position. Meanwhile, Lenovo ThinkColour² software allows you to easily and quickly adjust your screen settings with a simple click to enhance your work efficiency and optimize your monitor's extensive capabilities. Lenovo patented features, such as LAN on ThinkColour, show the network status from the screen to facilitate a more seamless workflow.



Master the art of multi-tasking

Get more done by doing less. A bigger screen leads to higher productivity with more space to open multiple applications at the same time. P34w-20 offers a wide 21:9 aspect ratio, so you can see your entire project without the distracting bezels in the middle of a dual display setup. Take your multitasking skills to new heights with PIP & PBP features to view content from two different computer sources simultaneously for streamlined collaboration. Save time by quickly switching and managing content between applications from two PCs on your screen with the patented eKVM and True Split⁴ features to boost your working efficiency. And you could also achieve multiple screen split options via the Lenovo exclusive software ThinkColour², make the multitasking a breeze.



Work unleashed with a single cable solution

The P34w-20 presents a perfect single cable solution that checks the box for every connectivity need: from transmitting power, data, video and ethernet signals to charging devices with patented Smart Power technology. The power of USB Type-C¹ allows for fast charging of a connected laptop with up to 100W³ of power. You could also expand to dual displays by daisy-chaining through the DP-Out connector. Turn your monitor into a productivity hub with a stable RJ-45 Ethernet port for secure internet connections, 2 x HDMI 2.0 and DP1.2 in and out for a clutter-free desktop. Manage your monitor easily with MAC address pass-through, PXE Boot and WoL⁵ conveniently built in, while enhanced ergonomic features, including up to 150 mm height adjustability, -5°/35° tilt range and -45°/45° swivel angle, let you work the way you want without compromise.

ThinkVision P34w-20

DISPLAY

Panel Size

34.14-inch

Screen Dimensions

812.1 mm x 359.5 mm

Panel Type

In-Plane Switching

Active Area

799.8 mm x 334.8 mm

Curvature

3800R

Backlight

WLED

Aspect Ratio

21:9

Resolution

3440 x 1440

Pixel Pitch

0.2325 mm x 0.2325 mm

Dot/Pixel Per Inch (DPI/PPI)

109

Viewing Angle (H x V @ CR 10:1)

178° / 178°

Response Time

4ms (Extreme Mode)

6ms (Normal Mode)

Refresh Rate

60Hz

Brightness (Typical)

300 cd/m²

Contrast Ratio (Typical)

1000:1

Dynamic Contrast Ratio (Typical)

3M:1

Color Gamut (Coverage Ratio)

99% sRGB

Color Support (Typical)

1.07 Billion

Color Depth

8-bit + FRC

HDR Compliance

Yes

Anti-glare

Yes

CONNECTIVITY

Video Signal

1 x USB3.2 Gen1 Type-C (DP 1.2 Alt Mode)

2 x HDMI 2.0

1 x DP 1.2

1 x DP Out

Audio Signal

1 x Audio Out (3.5 mm)

USB Hub

Yes

Ethernet

Yes (10M/100M/1000M)

USB Upstream

1 x USB3.2 Gen1 Type-C¹

1 x USB3.2 Gen1 Type-B

USB Downstream

1 x USB3.2 Gen1 Type-C¹

3 x USB3.2 Gen1 Type-A

DaisyChain Support

Yes (DP Out)

MULTIMEDIA

Integrated Speakers

Yes (2 x 3W)

Optional Modular Camera Support

Yes, MC50⁸ (PN: 4XCID66056)

SPECIAL FEATURES

Factory Calibration

Yes (Avg. Delta E<2)

PIP/PBP

Yes

KVM Switch

Yes

Software

Lenovo ThinkColour (Lenovo Display Control Center)²

POWER

Power Consumption (Typ. / Max)

36W / 230W

Power Consumption Sleep/ Off Mode

<0.5W

Power Consumption Sleep/Off Mode

<0.3W

ENERGY STAR Power Consumption (Pon/E_{TEC})

30W / 93kWh

Power Supply

Internal

USB Type-C¹ Power Delivery³ (W)

Up to 100W

Smart Power

Yes

Voltage Required

AC 100 to 240 V (50-60Hz)

MECHANICAL

Tilt Angle (Front/Back)

-5° / 35°

Swivel Angle (Left/Right)

-45° / 45°

Lift (Max. Range)

150 mm

VESA Mount Capability

Yes (100 x 100 mm)

ThinkCentre M Series Tiny Support

Yes, by Tiny Monitor Clamp II

(PN: 4XHOZ42451⁷)

ThinkCentre M Series Nano Support

Yes, by Nano Monitor

Clamp II (PN: 4XHOZ42451⁷)

Kensington Lock Slot

Yes

Cable Management

Yes

Bezel Color

Raven Black

Bezel Width (Side)

9.5 mm

Bezel Width (Top/Bottom)

9.5 / 28.4 mm

DIMENSION

Size Packed (D x H x W) (mm/inch)

220.0 x 475.0 x 937.0 mm

8.66 x 18.70 x 36.89 inches

Size Unpacked w/ Stand (D x H x W)

(mm/inch) (Lowest Position)

245.0 x 469.3 x 817.3 mm

9.65 x 18.48 x 32.18 inches

Size Unpacked w/ Stand (D x H x W)

(mm/inch) (Highest Position)

245.0 x 621.4 x 817.3 mm

9.65 x 24.46 x 32.18 inches

Size Unpacked w/o Stand (Head Only)

(D x H x W) (mm/inch)

76.8 x 372.7 x 817.3 mm

3.02 x 14.67 x 32.18 inches

Weight Packed (kg/lbs.)

15.5 kg / 34.2 lbs.

Weight Unpacked (kg/lbs.)

10.8 kg / 23.8 lbs.

Weight (Monitor Head Only) (kg/lbs.)

7.4 kg / 16.2 lbs.

WHAT'S IN THE BOX

Monitor with stand

1 x Power cable (1.8m)

1 x DP cable (1.8m) (NA only)

1 x USB Type-C¹ to Type-A cable

(1.8m) (NA only)

1 x USB Type-B to Type-A cable

(1.8m) (NA only)

1 x USB Type-C¹ cable (1.8m)

Factory calibration report

Quick setup guide

CERTIFICATION

ENERGY STAR Certification

Yes

CCC

Yes

TCO

9.0

EPEAT

Gold

RoHS (2011/65/EU)

Yes

Windows Certification

Windows 10, Windows 11

EU Energy Level Certification

Yes (Level-F)

China Energy Efficiency Standard

Tier 1

TÜV Rheinland Eye Comfort

Yes

TÜV Rheinland Low Blue Light

Yes

TÜV Rheinland Flicker Free

Yes

TÜV Low Blue Light (Hardware Solution)

Yes

Eyesafe Display Certification

Yes



¹ USB Type-C and USB-C are registered trademarks of USB Implementers Forum. | ² This software can only be used with Windows 10 & Windows 11. | ³ Listed as maximum capacity of power delivery. Actual capacity of power delivery may vary depending upon devices connected or monitor configuration and may decline with downstream USB ports connected or higher brightness setting. | ⁴ True Split is available with USB-C or DisplayPort connection in Windows only; not supporting in MAC OS. | ⁵ HDR10 only. | ⁶ For selected Lenovo notebooks. | ⁷ Sold separately. | ⁸ ThinkVision MC50 Monitor Webcam.

Depending on many factors such as the processing capability of peripheral devices, file attributes, and other factors related to system configuration and operating environments, the actual transfer rate using the various USB connectors on this device will vary and is typically slower than the data rates as defined by the respective USB specifications: 5 Gbit/s for USB 3.2 Gen 1; 10 Gbit/s for USB 3.2 Gen 2 & 20 Gbit/s for USB 3.2 Gen2x2.

© 2023 Lenovo. All rights reserved. These products are available while supplies last. Prices shown are subject to change without notice. For any questions concerning price, please contact your Lenovo Account Executive. Lenovo is not responsible for photographic or typographic errors. Warranty: For a copy of applicable warranties, write to: Warranty Information, 500 Park Offices Drive, RTP, NC 27709, Attn: Dept. ZPYA/B600. Lenovo makes no representation or warranty regarding third-party products or services. Trademarks: Lenovo, the Lenovo logo, Rescue and Recovery, ThinkPad, ThinkCentre, ThinkStation, ThinkVantage, and ThinkVision are trademarks or registered trademarks of Lenovo. Microsoft, Windows, and Vista are registered trademarks of Microsoft Corporation. Intel, the Intel logo, Intel Inside, Intel Core, and Core Inside are trademarks of Intel Corporation in the U.S. and/or other countries. Other company, product, and service names may be trademarks or service marks of others.

Specifications may vary depending upon region.