

Yealink DECT IP Multi-Cell System W80B

The Yealink DECT products bring scalability and increased mobility to business users, the DECT IP Multi-Cell System W80B provides a seamless handover and roaming solution, stable communication experience and simple deployment service covering multiple scenarios, including warehouses, hotels, 4S stores, offices, retail and other large spaces that need to use Multi-Cell solution. Yealink is dedicated to assist our users and partners benefit from our professional business communication solutions.



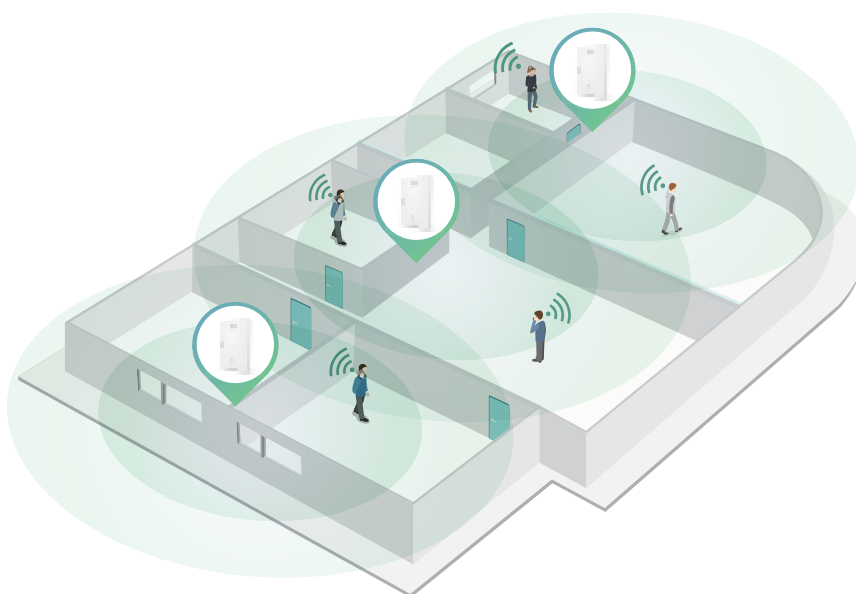
Easy Setup, Fast Deployment

The DECT IP Multi-Cell System provides easy setup for users and resellers. Even if you are in a non-multicast network environment, you can get the W80B base station's IP address directly from your phone to help you set up your system faster and easier. Yealink's DECT IP Multi-Cell Deployment Toolkit quickly confirms the correct location of any W80B base station, only through some steps of measurement, installation and configuration, that can easily set up the system and plan large-scale deployments.



Seamless Roaming & Stability

As the DECT IP Multi-Cell System, it provides a seamless roaming and handover solution that allows users to move freely in large indoor or outdoor spaces. The system supports up to 30 base stations and 100 handsets, wireless users could enjoy by flexibility, seamless roaming and handover, HD audio quality and clear communication.

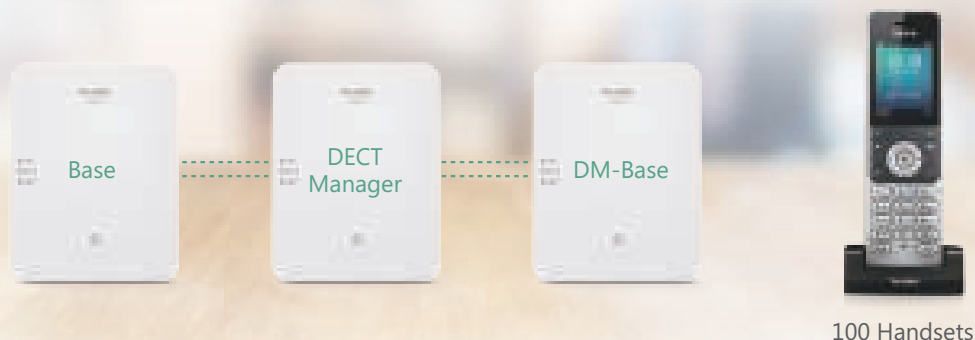


All in One, Up to 100 Parallel Calls

The DECT IP Multi-Cell System W80B supports DM, DM-Base, and Base mode.

The small system offers 10-Base networking, one of which switches to DM-Base mode while the rest switch to Base mode. The system supports the registration of up to 50 handsets and 50 parallel calls.

The medium system supports 30-Base networking, one of which switches to DM mode while the rest switch to Base mode. The system supports the registration of up to 100 handsets and 100 parallel calls.




Easy Access to Multiple Phone Books

The system offers easy access to multiple phone books, including Local Directory, Remote Phonebook, LDAP, and XML Phonebook. Additionally, it is broadly compatible with PBX contacts, including 3CX contacts and BSFT XSI contacts.



W80B key specification

Module	Specification	Yealink W80B
General	Pic	
	Maxnumber of base for system	30
	Max number of handset for system	100
	Simultaneous call for system	100
	Simultaneous call per base	8
	Indoor/Outdoor range	50m/300m
	Handover	Within group
	Roaming	Whole system
	Air Synchronisation	✓
	Handset module for W80B	W53H/W56H
	OTA for handset	✓
Audio	Wideband codecs	Opus, AMR-WB (optional), G.722
	Narrowband codecs	PCMU, PCMA, G.726, G.729, iLBC
	HD voice	✓
Interface	Ethenet interface	10/100M
	PoE	✓
	Wall mountable	✓
Features	LDAP	✓
	Broadsoft directory (User & Company)	✓
	BroadSoft Call Log	✓
	Shared Call Appearance (SCA)	✓
	DECT encryption	✓
	Transport Layer Security (TLS)	TLS1.0/1.1/1.2
	SRTP Support (Media)	✓
Compatibility	BroadSoft	✓
	3CX	✓
	Metaswitch	✓