

Surface Laptop for Business

Premium experiences drive AI advantage

intel CORE
| ULTRA |

Exceptional AI-enabled collaboration and Copilot+ PC¹ productivity in a sleek laptop chassis featuring Intel® Core™ Ultra processors (Series 2)



Precision haptic touchpad customizable for accessibility

Available in 13.8" and 15"



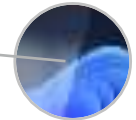
Copilot+PC

NPUs delivering 40 or 48 TOPS of on-device AI performance to support today's capabilities and tomorrow's innovations⁵

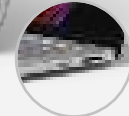
Optional smart card reader¹⁶



Near-edgeless display and Surface's signature 3:2 ratio for more screen in a compact footprint



Anti-reflective technology reduces reflections up to 50%



MicroSDXC Express card reader on 15"

Elevate productivity

Slim chassis, stunning display, and intuitive interactions make the most of Copilot¹ today and tomorrow

- Stunning PixelSense™ Flow touchscreen display with HDR technology³
- AI-enhanced 1080p Surface Studio Camera
- Dual Studio Mics featuring voice focus¹³ and Omnisonic® Speakers with Dolby Atmos^{®14}

AI performance built in

Move at the speed of opportunity with local AI processing and long-lasting battery life¹⁸

- Wi-Fi 7⁴ and Bluetooth® Core 5.4 enabled
- Two USB-C® with USB4®/Thunderbolt™ 4 ports and one USB-A port on all models
- Connect up to two 4K monitors¹⁷
- Supports fast charging²¹ and up to 22 hours on a single charge¹⁸

Adopt AI with peace of mind

Microsoft security at every layer to protect your data and your business

- Microsoft-designed and delivered firmware including Surface UEFI for easier configurability and up-to-date threat protection
- Strong Windows 11 Pro security enabled by default
- Secured-core PC with hardware-based protection against firmware attacks and emerging threats
- Microsoft Pluton and TPM 2.0 for enterprise-grade security
- End-to-end supply chain security

aka.ms/SurfaceforBusiness

¹On some devices, Copilot+ PC experiences require free updates continuing to roll out through early 2025. Timing varies by device and region. See aka.ms/copilotpluspc. ³HDR requires HDR content and enabling HDR in device settings. ⁴6GHz band not available in all regions. ⁵Intel® AI Boost with 48 TOPS on Intel® Core™ Ultra 7 processor 266V and Intel® Core™ Ultra 7 processor 268V. ¹³Voice focus requires activation, requires Windows 11 and is available in apps which use integrated device microphones and use certain Windows audio processing modes. ¹⁴Requires Dolby Atmos® encoded content/audio. ¹⁶Integrated smart card reader available on select 15" models and in select markets. ¹⁷With compatible docks. ¹⁸Based on local video playback test. Battery life varies significantly based on device configuration, usage, network and feature configuration, signal strength, settings, and other factors. See aka.ms/SurfaceBatteryPerformance for details. ²¹In select markets, only specific configurations come with Surface Power Supply. Fast charging is supported with minimum 65W Surface Power Supply or minimum 60W USB Type-C® PD charger or higher, sold separately. Testing conducted by Microsoft in December 2024. For details on fast charging see [USB-C® and fast charging for Surface - Microsoft Support](#).

Surface Laptop for Business

PROCESSOR

Surface Laptop for Business 13.8" and 15"

- Intel® Core™ Ultra 5 processor 236V
- Intel® Core™ Ultra 5 processor 238V
- Intel® Core™ Ultra 7 processor 266V
- Intel® Core™ Ultra 7 processor 268V

NPU

Intel® AI Boost with 40 TOPS

- Intel® Core™ Ultra 5 processor 236V
- Intel® Core™ Ultra 5 processor 238V

Intel® AI Boost with 48 TOPS

- Intel® Core™ Ultra 7 processor 266V
- Intel® Core™ Ultra 7 processor 268V

GRAPHICS

Intel® Arc™ Graphics

MEMORY AND STORAGE²⁷

Memory options: 16GB, 32GB LPDDR5x RAM

Storage options: Removable²² solid-state drive (Gen 4 SSD) 256GB, 512GB, 1TB

SECURITY

- Enterprise-grade security with TPM 2.0 chip and BitLocker support
- Windows 11 Secured-core PC
- Microsoft Pluton technology
- Windows Hello for Business with facial recognition and Enhanced Sign-In Security (ESS)
- Integrated smart card reader (available on select 15" models and in select markets)

PORTS AND CHARGING

Surface Laptop for Business 13.8"

- 2 x USB-C® with USB4®/Thunderbolt™ 4 ports with support for:
 - Charging
 - Data transfer
 - DisplayPort 2.1 supporting up to 2 x 4K monitors
 - Surface Thunderbolt™ 4 Dock and other accessories
- Supports fast charging with minimum 60W charger via Surface Connect or USB-C®²¹
- USB-A 3.1
- 3.5 mm headphone jack
- Surface Connect port

Surface Laptop for Business 15"

- 2 x USB-C® with USB4®/Thunderbolt™ 4 with support for:
 - Charging
 - Data transfer
 - DisplayPort 2.1 supporting up to 2 x 4K monitors
 - Surface Thunderbolt™ 4 Dock and other accessories
- Supports fast charging with minimum 60W charger via Surface Connect or USB-C®²¹
- USB-A 3.1
- MicroSDXC Express card reader¹⁵
- 3.5 mm headphone jack
- Surface Connect port
- Integrated smart card reader (available on select 15" models and in select markets)

NETWORK AND CONNECTIVITY

- Wi-Fi 7⁴
- Bluetooth® Core 5.4 technology

BATTERY LIFE

Surface Laptop for Business 13.8"

- Up to 20 hours of local video playback⁴⁰
- Up to 12 hours of active web usage³⁹

Surface Laptop for Business 15"

- Up to 22 hours of local video playback⁴⁰
- Up to 14 hours of active web usage³⁹

CAMERAS

- 1080p Full HD front-facing Surface Studio Camera
- Supports Windows Studio Effects and Windows Hello for Business with facial recognition

SOFTWARE

- Windows 11 Pro
- Preloaded Microsoft 365 Apps⁷
- Microsoft 365 Business Standard, Microsoft 365 Business Premium, or Microsoft 365 Apps 30-day trial²⁸

SIZE AND WEIGHT³⁰

Surface Laptop for Business 13.8"

- 11.85" x 8.67" x 0.69" (301 mm x 220 mm x 17.5 mm)
- 2.97 lbs (1.35 kg)

Surface Laptop for Business 15"

- 12.96" x 9.41" x 0.72" (329 mm x 239 mm x 18.26 mm)
- 3.66 lbs (1.66 kg)
- 3.64 lbs (1.65 kg) with smart card reader

DISPLAY

Surface Laptop for Business 13.8"

- Touchscreen: 13.8" PixelSense™ Flow display
- Resolution: 2304 x 1536 (201 PPI)
- Aspect ratio: 3:2
- Contrast ratio: 1300:1
- Dynamic refresh rate up to 120Hz
- Color profile: sRGB and Vivid
- Individually color-calibrated display
- Adaptive color
- Auto color management
- Touch: 10-point multi-touch
- Dolby Vision IQ™ support²⁹
- Corning® Gorilla® Glass 5
- Anti-reflective, ISO 9241-307 certified³³
- Brightness:
 - SDR: 600 nits maximum (typical)
 - HDR:³ 600 nits peak luminance

Surface Laptop for Business 15"

- Touchscreen: 15" PixelSense™ Flow display
- Resolution: 2496 x 1664 (201 PPI)
- Aspect ratio: 3:2
- Contrast ratio: 1300:1
- Dynamic refresh rate up to 120Hz
- Color profile: sRGB and Vivid
- Individually color-calibrated display
- Adaptive color
- Auto color management
- Touch: 10-point multi-touch
- Dolby Vision IQ™ support²⁹
- Corning® Gorilla® Glass 5
- Anti-reflective, ISO 9241-307 certified³³
- Brightness:
 - SDR: 600 nits maximum (typical)
 - HDR:³ 600 nits peak luminance

KEYBOARD LAYOUT

- Activation: Moving (mechanical) keys
- Layout: QWERTY, full row of function keys (F1 – F12)
- Windows key and dedicated buttons for media controls, screen brightness
- Keyboard backlight
- Copilot key⁹
- Precision haptic touchpad

AUDIO

- Dual Studio Mics with voice focus¹³
- Omnisonic® Speakers with Dolby Atmos®¹⁴
- Support for Bluetooth® LE Audio

³HDR requires HDR content and enabling HDR in device settings. ⁴6GHz band not available in all regions. ⁷Sold separately. Software license required for some features. ⁹Copilot key feature availability varies by market, see aka.ms/keysupport. ¹³Voice focus requires activation, requires Windows 11 and is available in apps which use integrated device microphones and use certain Windows audio processing modes. ¹⁴Requires Dolby Atmos® encoded content/audio. ¹⁵MicroSDXC Express card reader on 15" models only. ²¹In select markets, only specific configurations come with Surface Power Supply. Fast charging is supported with minimum 65W Surface Power Supply or minimum 60W USB Type-C® PD charger or higher, sold separately. Testing conducted by Microsoft in December 2024. For details on fast charging see [USB-C® and fast charging for Surface - Microsoft Support](https://aka.ms/usb-c-fast-charging). ²²Solid State Drive (SSD) Retention is only available on Microsoft Surface devices in which the SSD is marketed as removable per the Technical Specifications. Solid State Drive (SSD) Retention is included in both Extended Hardware Service Plus and Microsoft Complete for Business Plus and is also available as an Optional Add-on when purchasing Microsoft Extended Hardware Service and Microsoft Complete for Business. Devices returned to Microsoft with a missing Solid State Drive (SSD) are subject to a Solid State Drive (SSD) replacement fee unless the device is enrolled in the Drive (SSD) Retention offer. ²⁷System software uses significant storage space. Available storage is subject to change based on system software updates and apps usage. 1 GB = 1 billion bytes. 1TB = 1,000 GB. See [Surface Storage](https://aka.ms/surfacestorage) for more details. ²⁸Activation required. If your device is managed by your organization's IT department, contact your IT administrator for activation. After 30 days, you will be charged the applicable monthly or annual subscription fee. Credit card required. Cancel any time to stop future charges. See aka.ms/m365businessinfo. ²⁹Requires Dolby Vision® encoded content and video. ³⁰Might vary depending on manufacturing processes. ³³The Surface Laptop (Intel) 7th Edition display has been designed to minimize unwanted reflections and has been certified by TÜV SÜD to meet the requirements of ISO 9241-307. ³⁹Based on a web browsing test. Testing conducted by Microsoft in January 2025 using preproduction software and Surface Laptop 13.8" Intel Core Ultra 5 256GB, 16GB RAM devices and Surface Laptop 15" Intel Core Ultra 7 256GB, 16GB RAM devices. Testing consisted of full battery discharge while accessing eight popular websites over multiple open tabs through the browser. All settings were default except screen brightness set to 150 nits with Auto-Brightness disabled. Wi-Fi was connected to a network. Battery life varies significantly with settings, usage, and other factors. ⁴⁰Based on local video playback test. Testing conducted by Microsoft in January 2025 using preproduction software and preproduction Surface Laptop 13.8" Intel Core Ultra 5 256GB, 16GB RAM devices and Surface Laptop 15" Intel Core Ultra 7 256GB, 16GB RAM devices. Testing consisted of full battery discharge during video playback of a .mov file through the Windows Media Player application in 1080p at 24 FPS. All settings were default except screen brightness set to 150 nits with Auto-brightness disabled. Wi-Fi was connected to a network. Battery life varies significantly with settings, usage, and other factors.

Surface Laptop for Business

SERVICEABILITY

Replacement components include:²³

- Display assembly (including camera)
- Keyboard assembly (including touchpad)
- Removable solid-state drive
- Battery
- Motherboard module (including main processor and main memory)
- Surface Connect
- Audio jack
- MicroSDXC Express card reader (15")
- Speakers
- Enclosure (bucket)
- Thermal module
- Feet
- Fan

ACCESSIBILITY

- Surface precision haptic touchpad with adjustable click sensitivity, right click area, and adaptive touch mode³⁸
- Compatible with Surface Adaptive Kit and Microsoft adaptive accessories
- Includes Windows Accessibility Features – [Learn more](#)
- [Discover more Microsoft Accessible Devices & Products](#)

SENSORS

Ambient color sensor

WHAT'S IN THE BOX

- Surface Laptop for Business 13.8" or 15"
- Power Supply (In select markets, available only with specific configurations)
 - 13.8" 39W
 - 15" 65W
- Quick Start Guide
- Safety and warranty documents

EXTERIOR

- Casing: Anodized aluminum
- Colors:³¹ Platinum and Black

WARRANTY³²

1-year limited hardware warranty

SUSTAINABILITY

Designed with sustainability in mind.

Materials

- Enclosure is made with a minimum of 67.6% recycled content, including 100% recycled aluminum alloy and 100% recycled rare earth metals²⁵
- Paper-based packaging, minimizing plastic use

Repairability

Clear visual icons and built-in access to repair instructions²³

Surface Trade-in

We make trade-in convenient and secure for our commercial customers in the USA at [Microsoft Trade In Program](#).

Microsoft set a goal to be carbon negative, water positive, and achieve zero waste by 2030. Learn more about how we design with sustainability in mind at [Microsoft Surface Sustainability](#).

ENERGY USAGE [JAPAN]

Surface Laptop for Business 13.8"

Surface Laptop, 構成：12区分11.25kWh/年 (AAA)

Surface Laptop for Business 15"

Surface Laptop, 構成：12区分 12.04kWh/年 (AAA)

RADIO FREQUENCY [FRANCE]³⁴

Surface Laptop for Business 13.8"

Le débit d'absorption spécifique (DAS) local quantifie l'exposition de l'utilisateur aux ondes électromagnétiques de l'équipement concerné. Le DAS maximal autorisé est de 0.61W/kg pour le tronc et de 0.61W/kg pour les membres.

Surface Laptop for Business 15"

Le débit d'absorption spécifique (DAS) local quantifie l'exposition de l'utilisateur aux ondes électromagnétiques de l'équipement concerné. Le DAS maximal autorisé est de 0.61W/kg pour le tronc et de 0.61W/kg pour les membres.

FRENCH REPAIRABILITY INDEX [FRANCE]

[Découvrez comment l'indice de réparabilité est calculé](#)



²³Replacement components available through Surface Commercial authorized device resellers. Components can be replaced on-site by a skilled technician following Microsoft's Service Guide. Microsoft tools (sold separately) may also be required. Availability of replacement components and service options may vary by product, market and over time. See [Surface service options - Surface | Microsoft Learn](#). Opening and/or repairing your device can present electric shock, fire and personal injury risks and other hazards. Use caution if undertaking do-it-yourself repairs. Unless required by law, device damage caused during repair will not be covered under Microsoft's Hardware Warranty or protection plans. ²⁵Enclosure includes A Cover and C Bucket. 100% recycled aluminum alloy in A Cover and C Bucket. 100% recycled rare earth metals in magnets. Based on validation performed by Underwriter Laboratories, Inc. using Environmental Claim Validation Procedure (ECVP) for Recycled Content, dated June 20, 2024. ³¹Colors available on selected models only. Available colors, sizes, finishes, and processors may vary by store, market, and configuration. ³²Microsoft's Limited Warranty is in addition to your consumer law rights. ³⁴Le débit d'absorption spécifique (DAS) local quantifie l'exposition de l'utilisateur aux ondes électromagnétiques de l'équipement concerné. Le DAS maximal autorisé est de 2 W/kg pour la tête et le tronc et de 4 W/kg pour les membres. Consultez [cette page](#) pour en savoir plus. ³⁸Requires Windows 11.