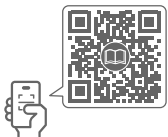




ThinkPad P16 Gen 2



Get started

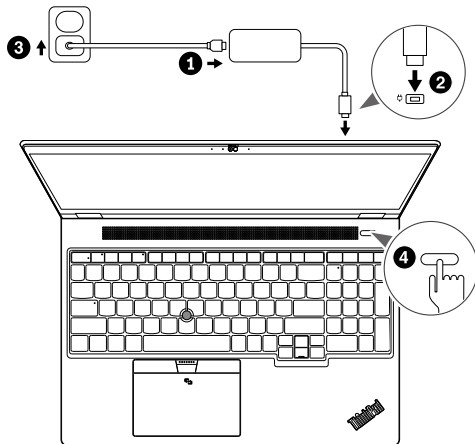


* Lenovo USB-C to
2.5G Ethernet Adapter

* Lenovo USB-C to
VGA Adapter

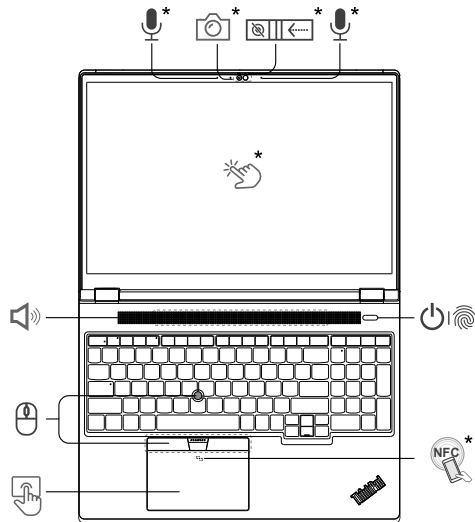
* Lenovo USB-C to
DisplayPort Adapter

* Lenovo HDMI to
VGA Adapter



* For selected models | For selected models | For selected models | For selected models | For selected models

Front view

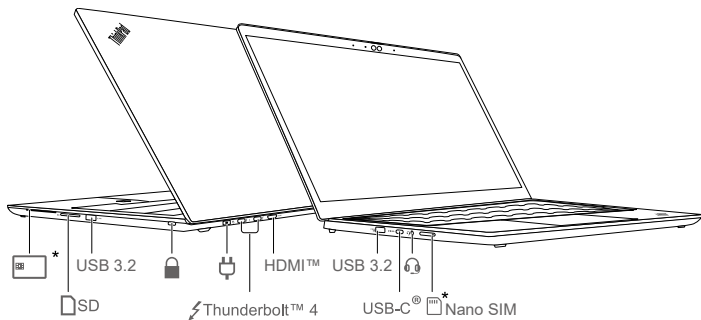


Press to log in to the computer



Navigate as a traditional mouse

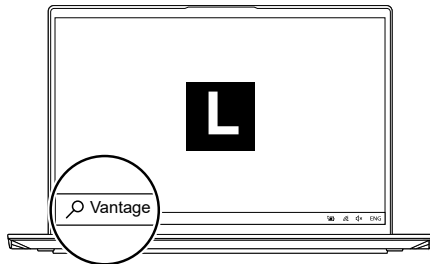
Overview



Read the statement on USB transfer rate in the *User Guide*. To access the *User Guide*, go to <https://pcsupport.lenovo.com>.

Lenovo Commercial Vantage*

Access Commercial Vantage to adjust device settings and check for system updates.



Lock on leave¹



Protect your privacy and improve battery life.

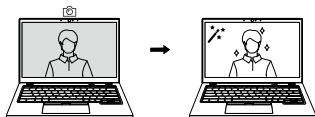


¹ For infrared camera models only. The initial BIOS disabled this function. It will be enabled by software update soon. Refer to README file for BIOS on system support site.

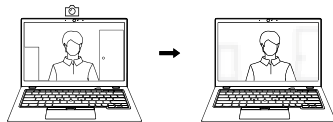
Lenovo View*



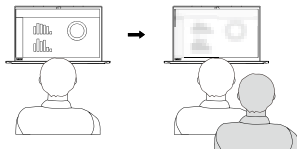
Video Enhancer



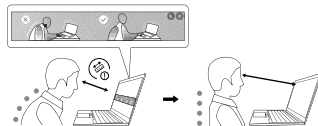
Background Removal



Privacy Guard



Posture Warning



Specific absorption rate (SAR)

YOUR DEVICE MEETS INTERNATIONAL GUIDELINES FOR EXPOSURE TO RADIO WAVES.

Refer to the following for 10g SAR limit and maximum reported SAR values:

10g SAR limit: 2 W/kg (body-worn SAR); 4 W/kg (limb SAR)

Maximum SAR with 0 mm separation distance: 0.572 W/kg (body-worn SAR); 0.572 W/kg (limb SAR)

For more information about SAR, refer to the *Safety and Warranty Guide* that came with your device.

European Union (EU) / United Kingdom (UK) — radio frequency and power

This radio equipment operates with the following frequency bands and maximum radio-frequency power:

Technology	Frequency [MHz] / band	Maximum transmit power
WLAN 802.11b/g/n/ax	2400 - 2483.5	< 20 dBm
WLAN 802.11a/n/ac/ax	5150 - 5725	< 23 dBm
WLAN 802.11a/n/ac/ax	5725 - 5875	< 13.98 dBm
WLAN 802.11ax	5945 - 6425	< 23 dBm
Bluetooth BR/EDR/LE	2400 - 2483.5	< 20 dBm
WWAN UMTS	1/8	< 24.5 dBm
WWAN LTE	1/3/7/8/20/28/34/38/40/41/42/43	< 25 dBm
WWAN LTE HPUE	41	< 26 dBm
NFC	13.56	< -5.31 dBμA/m@10m

Note: Not all wireless bands may be enabled depending on your product configuration. Usage of this device is limited to indoor locations in the bands 5150 - 5350 MHz and 5945 - 6425 MHz.



Printed in China

Second Edition (September 2023)

© Copyright Lenovo 2023.

LIMITED AND RESTRICTED RIGHTS NOTICE: If data or software is delivered pursuant to a General Services Administration "GSA" contract, use, reproduction, or disclosure is subject to restrictions set forth in Contract No. GS-35F-05925.

LENOVO, LENOVO logo, THINKPAD, and THINKPAD logo are trademarks of Lenovo. Intel and Thunderbolt are trademarks of Intel Corporation or its subsidiaries in the U.S. and/or other countries. The terms HDMI and HDMI High-Definition Multimedia Interface are trademarks or registered trademarks of HDMI Licensing LLC in the United States and other countries. USB-C is a registered trademark of USB Implementers Forum. All other trademarks are the property of their respective owners.



Reduce
Reuse
Recycle

For FSC Mix logo only