



# NetShelter Rack PDU Advanced

APC NetShelter™ Rack PDU Advanced helps you simplify data center planning with a 4-in-1 outlet and higher-density load capacity, so you can deploy IT faster and deliver more power to each rack, while minimizing downtime.



## 4-in-1 outlet for increased flexibility:

Acts as C13, C15, C19, and C21



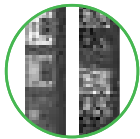
## Slim design:

Add more PDUs to the same rack



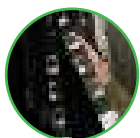
## 60°C operating temperature:

Can operate at higher temperatures to protect equipment from downtime



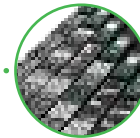
## Alternating phase and color-coded outlets:

Quickly see which breaker protects which outlets; simplify installation and setup, including load balancing



## Fast, flexible mounting:

Toollessly mount in APC and most industry standard racks. Optional side mounting for narrow racks



## More power:

Up to 48 outlets and 34.6 kW of power on one PDU



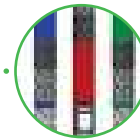
## 1% metering accuracy:

Know exactly how much power each outlet uses



## Environmental sensors:

Optional sensor support that monitors for temperature, moisture, and unwanted access



## Customized for your needs:

Configure-to-order options available for a variety of colors, input cord lengths, and input cord types

[apc.com/pdu-advanced](http://apc.com/pdu-advanced)

Life Is On

**Schneider**  
Electric



## NetShelter Rack PDU Advanced Series

Voltage	Mounting U-space	Nominal voltage	Region	Input circuit	Nominal power	Input plug type*	Output receptacles**	Cord length	APC SKU
Metered	Vertical, 0U	230	INTL	32 A, 1 $\phi$	7.4 kW	IEC-309 32 A	(20) C13/15 (20) 4-in-1	3.0 m	APDU10150ME
	Vertical, 0U	400 – 415	Worldwide	16, 20 A, 3 $\phi$	11.0, 11.5 kW	IEC-309 20 A 3P+N+PE	(21) C13/15 (21) 4-in-1	1.8 m	APDU10250ME
	Vertical, 0U	400 – 415	Worldwide	32, 30 A, 3 $\phi$	22.1, 17.3 kW	IEC-309 30 A 3P+N+PE	(24) C13/15 (24) 4-in-1	1.8 m	APDU10350ME
	Vertical, 0U	400 – 415	Worldwide	63, 60 A, 3 $\phi$	43.5, 34.6 kW	IEC-309 60 A 3P+N+PE	(21) C13/15 (21) 4-in-1	1.8 m	APDU10450ME
	Vertical, 0U	208	NAM	30 A, 1 $\phi$	5.0 kW	NEMA L6-30P	(20) C13/15 (20) 4-in-1	3.0 m	APDU10151ME
	Vertical, 0U	208	NAM	30 A, 3 $\phi$	8.6 kW	NEMA L21-30P	(21) C13/15 (21) 4-in-1	1.8 m	APDU10351ME
	Vertical, 0U	208	NAM	50 A, 3 $\phi$	14.4 kW	CS8365C	(21) C13/15 (21) 4-in-1	1.8 m	APDU10451ME
	Vertical, 0U	208	NAM	60 A, 3 $\phi$	17.3 kW	IEC-309 60 A 3P+PE	(21) C13/15 (21) 4-in-1	1.8 m	APDU10452ME
Metered -by- Outlet	Vertical, 0U	400 – 415	Worldwide	32, 30 A, 3 $\phi$	22.1, 17.3 kW	IEC-309 32 A 3P+N+PE	(24) C13/15 (24) 4-in-1	1.8 m	APDU10350MO
	Vertical, 0U	208	NAM	60 A, 3 $\phi$	17.3 kW	IEC-309 60 A 3P+PE	(21) C13/15 (21) 4-in-1	1.8 m	APDU10452MO
Switched	Vertical, 0U	230	INTL	32 A, 1 $\phi$	7.4 kW	IEC-309 32 A	(20) C13/15 (20) 4-in-1	3.0 m	APDU10150SW
	Vertical, 0U	400 – 415	Worldwide	16, 20 A, 3 $\phi$	11.0, 11.5 kW	IEC-309 20 A 3P+N+PE	(21) C13/15 (21) 4-in-1	1.8 m	APDU10250SW
	Vertical, 0U	400 – 415	Worldwide	32, 30 A, 3 $\phi$	22.1, 17.3 kW	IEC-309 30 A 3P+N+PE	(24) C13/15 (24) 4-in-1	1.8 m	APDU10350SW
	Vertical, 0U	400 – 415	Worldwide	63, 60 A, 3 $\phi$	43.5, 34.6 kW	IEC-309 60 A 3P+N+PE	(21) C13/15 (21) 4-in-1	1.8 m	APDU10450SW
	Vertical, 0U	208	NAM	30 A, 1 $\phi$	5 kW	NEMA L6-30P	(20) C13/15 (20) 4-in-1	3.0 m	APDU10151SW
	Vertical, 0U	208	NAM	30 A, 3 $\phi$	8.6 kW	NEMA L21-30P	(24) C13/15 (24) 4-in-1	1.8 m	APDU10351SW
	Vertical, 0U	208	NAM	50 A, 3 $\phi$	14.4 kW	CS8365C	(21) C13/15 (21) 4-in-1	1.8 m	APDU10451SW
	Vertical, 0U	208	NAM	60 A, 3 $\phi$	17.3 kW	IEC-309 60 A 3P+PE	(21) C13/15 (21) 4-in-1	1.8 m	APDU10452SW
Metered-by-Outlet with Switching	Vertical, 0U	230	INTL	32 A, 1 $\phi$	7.4 kW	IEC-309 32 A	(20) C13/15 (20) 4-in-1	3.0 m	APDU10150SM
	Vertical, 0U	400 – 415	Worldwide	16, 20 A, 3 $\phi$	11.0, 11.5 kW	IEC-309 20 A 3P+N+PE	(24) C13/15 (24) 4-in-1	1.8 m	APDU10250SM
	Vertical, 0U	400 – 415	Worldwide	32, 30 A, 3 $\phi$	22.1, 17.3 kW	IEC-309 30 A 3P+N+PE	(24) C13/15 (24) 4-in-1	1.8 m	APDU10350SM
	Vertical, 0U	400 – 415	Worldwide	63, 60 A, 3 $\phi$	43.5, 34.6 kW	IEC-309 60 A 3P+N+PE	(21) C13/15 (21) 4-in-1	1.8 m	APDU10450SM
	Vertical, 0U	208	NAM	30 A, 1 $\phi$	5 kW	NEMA L6-30P	(20) C13/15 (20) 4-in-1	3.0 m	APDU10151SM
	Vertical, 0U	208	NAM	30 A, 3 $\phi$	8.6 kW	NEMA L21-30P	(24) C13/15 (24) 4-in-1	1.8 m	APDU10351SM
	Vertical, 0U	208	NAM	50 A, 3 $\phi$	14.4 kW	CS8365C	(21) C13/15 (21) 4-in-1	1.8 m	APDU10451SM
	Vertical, 0U	208	NAM	60 A, 3 $\phi$	17.3 kW	IEC-309 60 A 3P+PE	(21) C13/15 (21) 4-in-1	1.8 m	APDU10452SM

\*IEC Input Plug options listed are IP44 plug types; \*\* (20) 4-in-1 outlet acts as C13/C15/C19/C21 outlet.

### Intelligent power management options

- **Metered:** Real-time remote monitoring of connected loads; user-defined alarms that warn of potential circuit overloads before critical IT failures occur
- **Switched:** Advanced load monitoring combined with remote on/off switching control of individual outlets for power cycling, delayed power sequencing, and outlet use management
- **Metered-by-outlet:** Real-time remote monitoring of each individual outlet
- **Metered-by-outlet with switching:** Real-time remote monitoring of each individual outlet combined with remote on/off outlet switching control

Ready to add NetShelter Rack PDU Advanced to your data center?  
Contact your APC sales representative or buy online.

[apc.com/pdu-advanced](http://apc.com/pdu-advanced)

Life Is On

**Schneider**  
Electric