



# EdgePower™

EdgePoint™ DC Power Supply

Model: EP-54V-150W

Flexible, Modular PSU Design

Supports up to Two 150W PSU Modules

Secondary AC-DC or DC-DC PSU Available

# EdgePower™

## Modular DC Power Supply for EdgePoint

The EdgePower™ is a high-power, modular PSU system designed to connect to EdgePoint™ routers/switches, and provide reliable power to attached PoE devices.

The EdgePower uses modular PSUs for flexible configuration options. The EdgePower can utilize two modular PSUs to provide up to 300W of power, or be configured to provide up to 150W of power with an automatic PSU backup.

The EdgePower consists of a rack-mountable, two-bay housing and control unit, and includes one AC-DC 54V, 150W PSU module. The second PSU bay can house an AC-DC or DC-DC PSU module (sold separately):

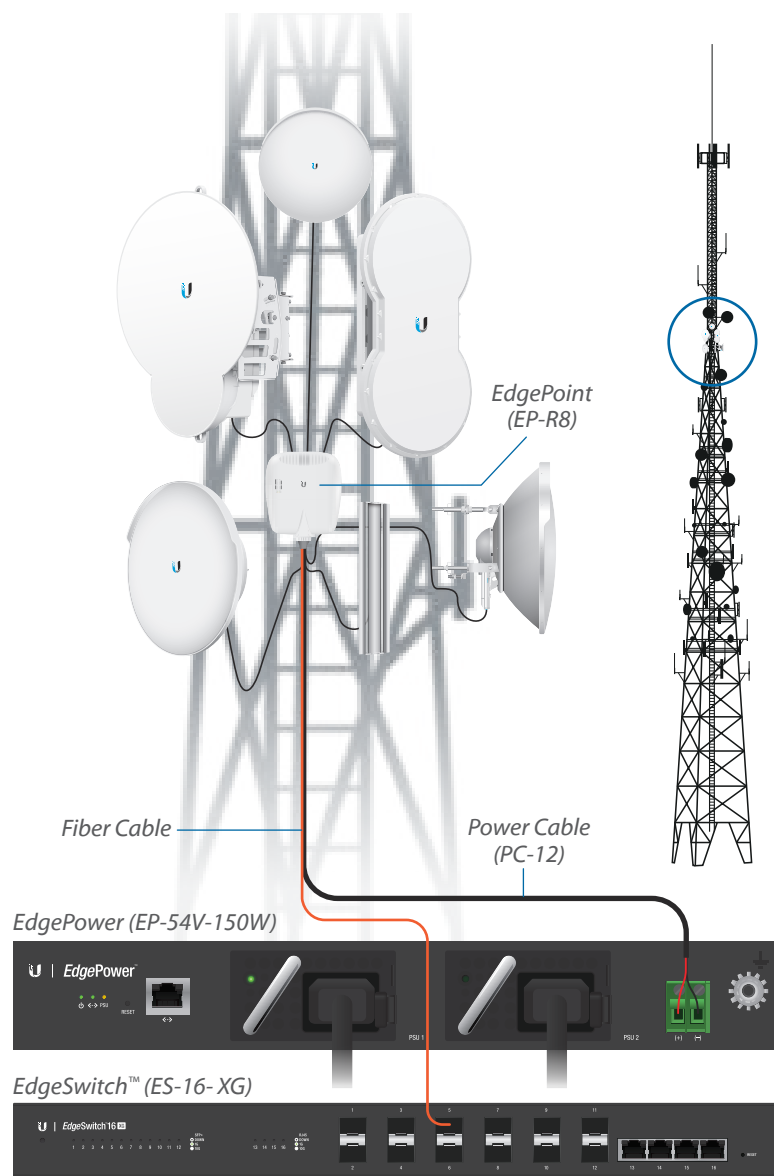
- EP-54V-150W-AC
- EP-54V-150W-DC

## High Power

The EdgePower provides up to 150W of power output. With an optional PSU in the secondary bay, the EdgePower may be configured to deliver up to 300W of power.

## Backup PSU

The secondary PSU may be configured as a backup PSU. In backup mode, the secondary PSU remains inactive and offline. If failure of the primary PSU is detected, the secondary PSU automatically activates to supply continuous power.



Tower Deployment Example



## Web UI

Designed for convenient management, the EdgePower Configuration Interface allows administrators to configure and monitor PSU features in a simple, graphical user interface.

The EdgePower may be connected to the LAN for remote monitoring and configuration.



# PowerCable™

Model: PC-12

## Outdoor DC Power Cabling

Manufactured to engineering specifications to supply reliable power to your EdgePoint devices. Available in 1000 ft. reels.

- All-Weather, UV-Resistant
- 12 AWG Tinned Stranded Copper
- Fire-Resistant Polyethylene Jacket (FT-1)
- Temperature Range: -30 to 90° C
- Pull Tension: 80 lb Minimum
- Capacitance: 28 pF/ft @ 1 kHz
- DCR: 1.77  $\Omega$ /1000 ft @ 20° C
- Voltage Rating: 300V
- Impedance: 56  $\Omega$

1000 ft  
(305 m)  
Reel



# Specifications

EdgePower EP-54V-150W	
Dimensions without Mount Brackets	299.8 x 286.9 x 42.55 mm (11.89 x 11.3 x 1.675")
Weight without Mount Brackets	2.7 kg (5.95 lb)
Power Method	100-240VAC/50-60 Hz, Universal Input
Power Supply Module	54V, 150W AC/DC, Model EP-54V-150W-AC, Installed in PSU 1
Maximum Power Output	150W (1 PSU Module) 300W (2 PSU Modules @ 150W Each)
LEDs Power Ethernet PSU	System On/Off Management Port Link PSU1+PSU2, PSU1/PSU2
Networking Interface	(1) 10/100 RJ45 Ethernet
Management Interface	Ethernet In-Band, Web UI
Rack-Mount	Yes, 1U High
Operating Temperature	0 to 40° C (32 to 104° F)
Operating Humidity	10 to 90% RH
ESD/EMP Protection	Air ± 24KV; Contact ± 24KV
Certifications	CE, FCC, IC



# Specifications

EdgePower EP-54V-150W-DC	
Power Method	DC/DC 150W for 22 - 60V Input, DC Terminal Block for 54V Output
Power Supply	DC/DC 150W for 22 - 60V Input
Supported Voltage Range	DC/DC for 22 - 60V Input, 54V Output
Battery Type	2/3/4 Series Lead Acid Battery
Maximum Charging Voltage	
2 Series	26.8 - 27.5V
3 Series	40.2 - 41.2V
4 Series	53.6 - 55V
Discharge Protection Voltage	
2 Series	21.5V
3 Series	32V
4 Series	43V
Charging Current	
2 Series	0.3A
3 Series	0.3A
4 Series	0.2A
LED	System On/Off
Operating Temperature	0 to 40° C (32 to 104° F)
Operating Humidity	10 to 90% RH
ESD/EMP Protection	Air $\pm$ 8KV; Contact $\pm$ 6KV
Certifications	CE, FCC, IC



# Specifications

EdgePower EP-54V-150W-AC	
Power Method	AC/DC 150W for 110 - 240VAC Input, DC Terminal Block for 54V Output
Power Supply	AC/DC 150W for 110 - 240VAC Input
Supported Voltage Range	AC/DC for 110-240VAC Input , 54V Output
LED	System On/Off
Operating Temperature	0 to 40° C (32 to 104° F)
Operating Humidity	10 to 90% RH
ESD/EMP Protection	Air ± 8KV; Contact ± 6KV
Certifications	CE, FCC, IC



Specifications are subject to change. Ubiquiti products are sold with a limited warranty described at: [www.ubnt.com/support/warranty](http://www.ubnt.com/support/warranty)  
 ©2016 Ubiquiti Networks, Inc. All rights reserved. Ubiquiti, Ubiquiti Networks, the Ubiquiti U logo, the Ubiquiti beam logo, EdgeMAX, EdgePoint, EdgePower, EdgeSwitch, and PowerCable are trademarks or registered trademarks of Ubiquiti Networks, Inc. in the United States and in other countries. All other trademarks are the property of their respective owners.