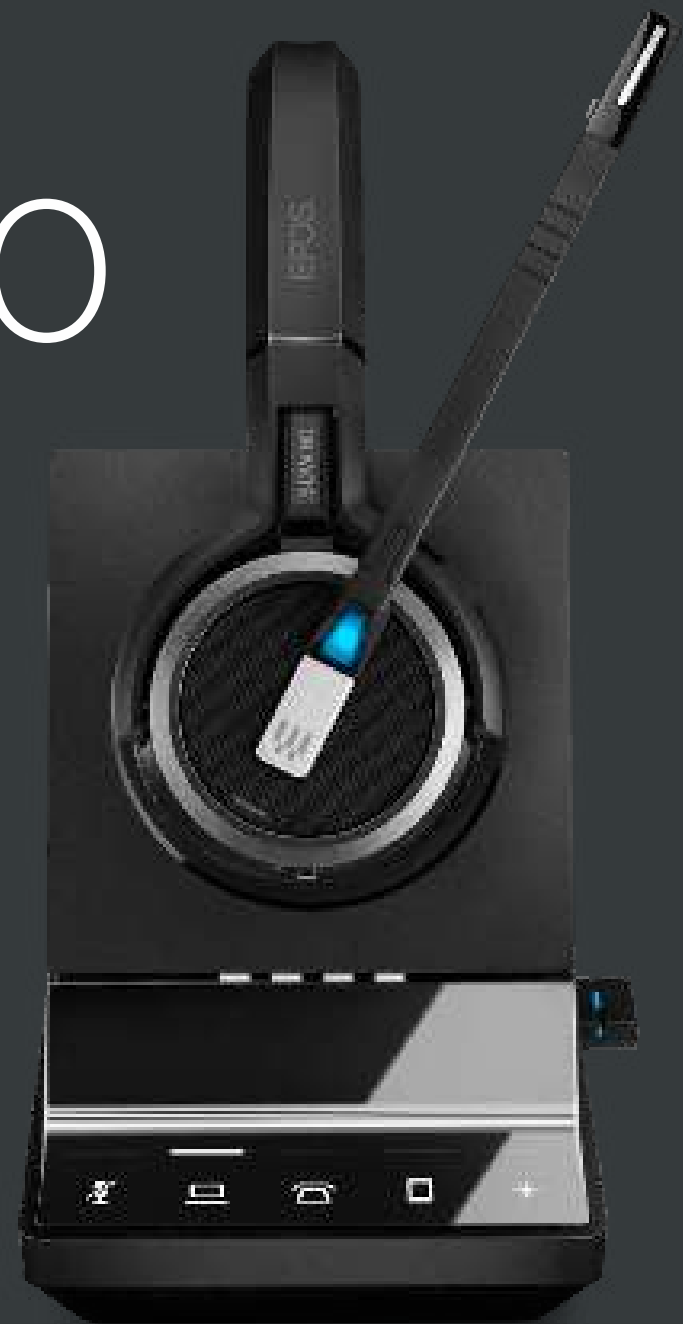


EPOS

EMEA/APAC

IMPACT 5000 Series

IMPACT 5000 Series is a wireless DECT headset for modern office professionals, providing next generation communication quality, future-proof device flexibility, all-day wearing comfort and advanced security to modern work environments.



We are rebranding from EPOS | SENNHEISER to EPOS branding on our products.
During the transition period the same product may exist in both versions



Key Features

Get all-day wearing comfort

With soft leatherette ear pad and a choice of wearing styles for consistent comfort and well-being to increase efficiency

Increase productivity and create focus

With clear busy light, noise dampening ear pads and easy call management

Experience superior EPOS sound

With super wideband and advanced two microphone noise-cancelling system that meets Teams Open Office specifications

Empower your people with total flexibility

One flexible headset that pairs easily to all devices with extensive wireless range up to 180 m/590 ft

Ensure enhanced security for all your calls

With Protected Pairing, 128-bit authentication and DECT Security certification

What's in the Box

Base Station



Headset



USB Dongle



USB Cable



Safety Guide

Quick Guides

Compliance Sheet

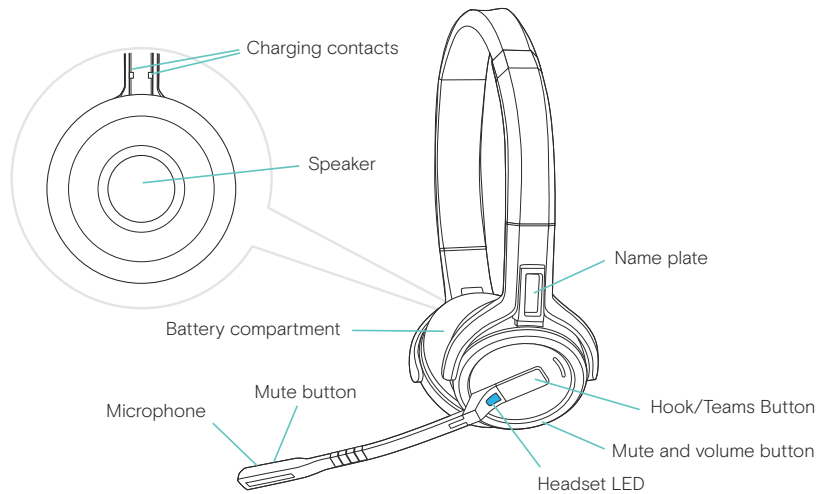


Items in the box may vary depending on product variant and may include:

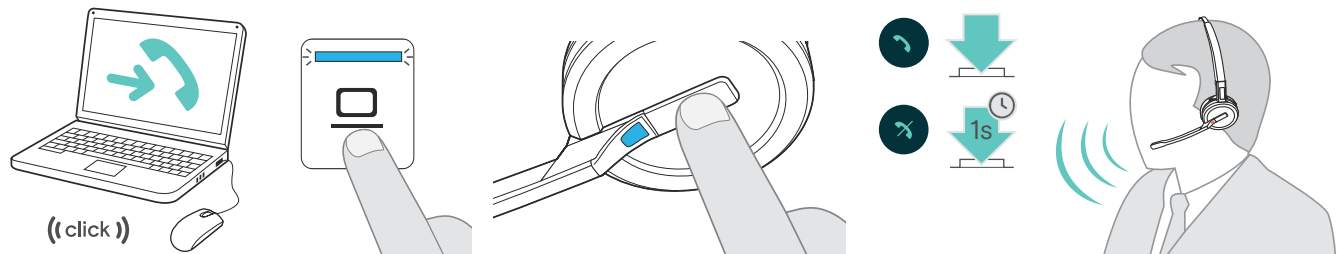
Power Suply

Audio Phone Cable

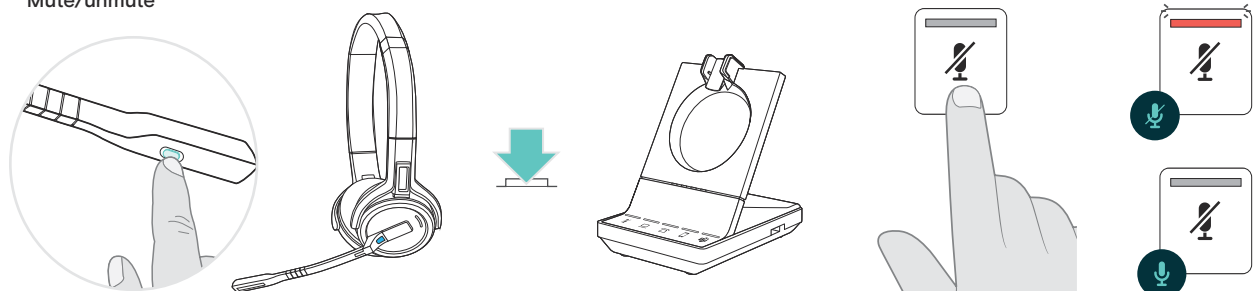
How to Use the IMPACT 5000



Accept/end a call



Mute/unmute



Additional benefits & features

**High-density wideband mode**

Delivers crisp and natural sound for clear calls even in dense office environments.

**Triple connectivity**

Stay connected to computer, desk phone, and mobile phone at the same time.

**Extended talk time**

Have uninterrupted conversations for up to 14 hours in narrowband mode.

**Fast charging**

Stay ready by getting up to 50% of battery charge in just 30 minutes.

**EPOS ActiveGard® technology**

Prevent hearing loss or damage by protecting yourself from acoustic shock.

**Improved speech intelligibility**

Be heard with a two-microphone noise-cancelling system and own-voice detection.

**EPOS Manager**

Configure, manage, and monitor device usage remotely from a central admin portal

**4-headset conferencing**

Use the same base station to set up phone conferences for up to 4 headsets.

**Rich multimedia experience**

Enjoy music and multimedia with exceptional quality stereo sound.

Product data

1/6

General

Wearing style	Single- and double-sided headset
Headset weight	501X: 44 g / 1.55 oz (Ear hook version) 58 g / 2.05 oz (Headband version) 43 g / 1.52 oz (Neckband version) 503X: 100 g / 3.52 oz 506X: 136 g / 4.80 oz
DECT	1.880 to 1.900 MHz (EU, UK, AUS)
Warranty	2 years

Audio

Speaker frequency response	501X: 100 Hz – 11.0 kHz (Super wideband) 100 Hz – 7,5 kHz (Standard wideband and High density wideband) 150 Hz – 3.5 kHz (Narrowband) 503X: 50 Hz – 11.5 kHz (Super wideband) 50 Hz – 7,5 kHz (Standard wideband and High density wideband) 150 Hz – 3.5 kHz (Narrowband) 20 Hz – 20 kHz (Fullband – music mode) 506X: 150 Hz – 11.5 kHz (Super wideband) 150 Hz – 7,5 kHz (Standard wideband and High density wideband) 150 Hz – 3.5 kHz (Narrowband) 20 Hz – 20 kHz (Fullband – music mode)
Microphone type	Digital MEMs microphones – two microphone noise-cancelling system for exceptional speech clarity
Microphone frequency response	501X: 100 Hz – 11.0 kHz (Super wideband) 100 Hz – 7,5 kHz (Standard wideband and High density wideband) 150 Hz – 3.5 kHz (Narrowband) 503X: 100 Hz – 11.0 kHz (Super wideband) 100 Hz – 7,5 kHz (Standard wideband and High density wideband) 150 Hz – 3.5 kHz (Narrowband) 506X: 100 Hz – 11.0 kHz (Super wideband) 100 Hz – 7,5 kHz (Standard wideband and High density wideband) 150 Hz – 3.5 kHz (Narrowband)
Noise cancellation	Two microphone noise-cancelling system

Product data

2/6

Technical

Charging time

501X: 0 – 50%: 30 minutes
0 – 100%: 1 hour
503X: 0 – 50 %: 30 minutes
0 – 100 %: 1 hour and 30 min
506X: 0 – 50 %: 30 minutes
0 – 100%: 1 hour and 30 min.

Standby time

501X: Up to 48 hours
503X/506X: Up to 44 hours

Talk time

501X: Up to 10 hours (Narrowband)
Up to 7 hours (Density optimized wideband)
Up to 8 hours (Wideband)
Up to 6 hours (Super wideband)
503X: Up to 14 hours (Narrowband)
Up to 12 hours (Density optimized wideband)
Up to 11,5 hours (Wideband)
Up to 9 hours (Super wideband)
506X: Up to 14 hours (Narrowband)
Up to 12 hours (Density optimized wideband)
Up to 11,5 hours (Wideband)
Up to 9 hours (Super wideband)

Range

Line of sight: 180 m / 590 ft
Typical office building: 55 m / 180 ft

Software

EPOS devices can be managed with following Software solutions:

EPOS Connect

Conduct firmware updates and configure headsets for personal audio preferences.
EPOS Connect works for Windows, Mac® and VDI/Thin client environments: eposaudio.com/software-epos-connect

EPOS Manager

Manage, update and configure EPOS audio devices from any location.
For both cloud and on-premises solutions: eposaudio.com/software-epos-manager

Product data

3/6

What's in the box	Product	SDW 5013	SDW 5015	SDW 5016	SDW 5033	SDW 5035	SDW 5036	SDW 5063	SDW 5065	SDW 5066
Headset	SDW 10 HS*	●	●	●						
	SDW 30 HS				●	●	●			
	SDW 60 HS							●	●	●
Base Station	SDW 3 BS	●			●			●		
	SDW 5 BS		●	●		●	●		●	●
Dongle	BTD 800 USB Dongle			●			●			●
Cables	Power Supply	●	●	●	●	●	●	●	●	●
	USB Cable	●	●	●	●	●	●	●	●	●
	Audio Phone Cable		●	●		●	●		●	●

Quick Guide, Safety Guide and Compliance Sheet are included for all solutions

* incl. 3-in-1 wearingstyle kit: headband, neckband, earhook and accessories

Product data

4/6

What's in the box	Product	SDW 5013T	SDW 5016T	SDW 5033T	SDW 5036T	SDW 5063T	SDW 5066T
Headset	SDW 10 HS*	●	●				
	SDW 30 HS			●	●		
	SDW 60 HS					●	●
Base Station	SDW 3 BS T	●		●		●	
	SDW 5 BS T		●		●		●
Dongle	BTD 800 USB Dongle		●		●		●
Cables	Power Supply	●	●	●	●	●	●
	USB Cable	●	●	●	●	●	●
	Audio Phone Cable		●		●		●

Quick Guide, Safety Guide and Compliance Sheet are included for all solutions

* incl. 3-in-1 wearingstyle kit: headband, neckband, earhook and accessories

Product data

5/6

Product	Wearing style	Connects to	Certifications	EAN code	UPC code
SDW 5066 – EU / UK / AUS Art. no. 1001026	Double-sided	Desk phone, PC/Softphone, mobile devices	Optimized for UC and certified for Webex, Avaya, Alcatel-Lucent Enterprise, Enreach	57 14708 00828 6	8 40064 40828 8
SDW 5066 – AUS* Art. no. 1000630	Double-sided	Desk phone, PC/Softphone, mobile devices	Optimized for UC and certified for Webex, Avaya, Alcatel-Lucent Enterprise, Enreach	57 14708 00431 8	8 40064 40431 0
SDW 5066T – EU / UK / AUS Art. no. 1001039	Double-sided	Desk phone, PC/Softphone, mobile devices	Optimized for UC and certified for Microsoft Teams	57 14708 00841 5	8 40064 40841 7
SDW 5066T – AUS* Art. no. 1001124	Double-sided	Desk phone, PC/Softphone, mobile devices	Optimized for UC and certified for Microsoft Teams	57 14708 00926 9	8 40064 40926 1
SDW 5036 – EU / UK / AUS Art. no. 1001025	Single-sided	Desk phone, PC/Softphone, mobile devices	Optimized for UC and certified for Webex, Avaya, Alcatel-Lucent Enterprise, Enreach	57 14708 00827 9	8 40064 40827 1
SDW 5036 – AUS* Art. no. 1000590	Single-sided	Desk phone, PC/Softphone, mobile devices	Optimized for UC and certified for Webex, Avaya, Alcatel-Lucent Enterprise, Enreach	57 14708 00391 5	8 40064 40391 7
SDW 5036T – EU / UK / AUS Art. no. 1001037	Single-sided	Desk phone, PC/Softphone, mobile devices	Optimized for UC and certified for Microsoft Teams	57 14708 00839 2	8 40064 40839 4
SDW 5036T – AUS* Art. no. 1001123	Single-sided	Desk phone, PC/Softphone, mobile devices	Optimized for UC and certified for Microsoft Teams	57 14708 00925 2	8 40064 40925 4
SDW 5016 – EU / UK / AUS Art. no. 1001024	Single sided	Desk phone, PC/Softphone, mobile devices	Optimized for UC and certified for Webex, Avaya, Alcatel-Lucent Enterprise, Enreach	57 14708 00826 2	8 40064 40826 4
SDW 5016T – EU / UK / AUS Art. no. 1001035	Single sided	Desk phone, PC/Softphone, mobile devices	Optimized for UC and certified for Microsoft Teams	57 14708 00837 8	8 40064 40837 0
SDW 5065 – EU / UK / AUS Art. no. 1001023	Double-sided	Desk phone, PC/Softphone	Optimized for UC and certified for Google Meet, Webex, Avaya, Alcatel-Lucent Enterprise, Enreach	57 14708 00825 5	8 40064 40825 7
SDW 5035 – EU / UK / AUS Art. no. 1001022	Single-sided	Desk phone, PC/Softphone	Optimized for UC and certified for Webex, Avaya, Alcatel-Lucent Enterprise, Enreach	57 14708 00824 8	8 40064 40824 0

* AU-limiter ON

Product data

6/6

Product	Wearing style	Connects to	Certifications	EAN code	UPC code
SDW 5015 – EU / UK / AUS Art. no. 1001021	Single sided	Desk phone, PC/Softphone	Optimized for UC and certified for Webex, Avaya, Alcatel-Lucent Enterprise, Enreach	57 14708 00823 1	8 40064 40823 3
SDW 5063 – EU / UK / AUS Art. no. 1001017	Double-sided	PC/Softphone	Optimized for UC and certified for Webex, Avaya, Alcatel-Lucent Enterprise, Enreach	57 14708 00819 4	8 40064 40819 6
SDW 5063T – EU / UK / AUS Art. no. 1001033	Double-sided	PC/Softphone	Optimized for UC and certified for Microsoft Teams	57 14708 00835 4	8 40064 40835 6
SDW 5033 – EU / UK / AUS Art. no. 1001016	Single sided	PC/Softphone	Optimized for UC and certified for Webex, Avaya, Alcatel-Lucent Enterprise, Enreach	57 14708 00818 7	8 40064 40818 9
SDW 5033T – EU / UK / AUS Art. no. 1001031	Single sided	PC/Softphone	Optimized for UC and certified for Microsoft Teams	57 14708 00833 0	8 40064 40833 2
SDW 5013 – EU / UK / AUS Art. no. 1001015	Single sided	PC/Softphone	Optimized for UC and certified for Webex, Avaya, Alcatel-Lucent Enterprise, Enreach	57 14708 00817 0	8 40064 40817 2
SDW 5013T – EU / UK / AUS Art. no. 1001029	Single sided	PC/Softphone	Optimized for UC and certified for Microsoft Teams	57 14708 00831 6	8 40064 40831 8

Spare parts & Accessories

1/1

Product	Art. no.	Description	EAN code	UPC code
SDW 10 HS	1000631	Single-sided headset with three wearing styles for SDW 501x and SDW 501xT	57 14708 00432 5	8 40064 40432 7
SDW 30 HS	1000632	Single-sided headset for SDW 503x and SDW 503xT o	57 14708 00433 2	8 40064 40433 4
SDW 60 HS	1000663	Double-sided headset for SDW 506x and SDW 506xT	57 14708 00434 9	8 40064 40434 1
SDW 3 BS – EU / UK / AUS	1001028	Base station for SDW 50x3	57 14708 00830 9	8 40064 40830 1
SDW 3 BS T – EU / UK / AUS	1001043	Base station for SDW 50x3T	57 14708 00845 3	8 40064 40845 5
SDW 5 BS – EU / UK / AUS	1001027	Base station for SDW 50x5 and SDW 50x6 (without BTD 800 dongle)	57 14708 00829 3	8 40064 40829 5
SDW 5 BS T – EU / UK / AUS	1001041	Base station for SDW 50x6T (without BTD 800 dongle)	57 14708 00843 9	8 40064 40843 1
BTD 800	1000227	USB Bluetooth® Dongle	57 14708 00028 0	8 40064 40028 2
CH 30	1000702	Headset charger stand	57 14708 00503 2	8 40064 40503 4
CH 30 USB	1001143	USB Charging Cable	57 14708 00945 0	8 40064 40945 2
SDW D1 Accessory Pack	1000982	Carry pouch and USB-A charging cable for IMPACT 5000 headsets	57 14708 00784 5	8 40064 40784 7
SDW D1 USB	1000299	USB DECT dongle	57 14708 00100 3	8 40064 40100 5
UI 10 BL	1000701	Busylight	57 14708 00502 5	8 40064 40502 7

Appendix

1/1

Additional product data

Ear pad size	501X: ø 53 mm / 2.09 in 503X: ø 54,5 mm / 2.15 in 506X: ø 54,5 mm / 2.15 in
Personalization	Yes with nameplate on headset
Speaker type	High-quality Neodymium Magnet Speaker for outstanding audio quality
GAP compatible	Yes (Headset)
BTD 800 USB dongle	For more information please see eposaudio.com/btd-800-usb (included in SDW 50x6 and SDW 50x6T)
USB-A port	Supports call handling with EPOS devices
Temperature range	Operational: +5 °C to + 45 °C / +41 °F to +113 °F Storage: -20 °C to + 70 °C / -4 °F to +158 °F
Battery (lithium polymer)	Exchangeable by service
Listen time (music mode)	Up to 9 hours (Fullband)
Auto sleep mode when out of range	Yes, after 12 hours
EPOS ActiveGard® technology	Protect users against acoustic injury caused by sudden sound burst on the line
EU* / AU Limiter depending on regional variant	Activation by dip switch, EPOS Connect and EPOS Manager software
Pairing intrusion protection	Protected pairing
Certification	DECT Security certified

* Noise At Work: The EU's „Noise At Work Directive“ (2003/10/EC) sets limits for two types of noise in the workplace: Acoustic burst and Sustained Noise.