

Rugged mobile receipt & label printer range

**RJ Series
mobile printers**

www.brother.eu

RJ Series



A female worker with brown hair tied back, wearing a black polo shirt and a blue apron, is standing in a warehouse or retail environment. She is holding a black handheld barcode scanner in her right hand and a small white paper bag in her left. A black mobile printer is clipped to her apron, with a printed label visible. The background shows shelves stocked with various items, including colorful bags of snacks. A yellow text box is overlaid on the bottom left.

**Empower
workers to
create and
amend labels
at any location**

Brother provide a comprehensive range of RJ mobile printers. They feature impressive print speeds and a rugged build quality to fit the requirements of a wide range of vertical market applications. Bluetooth, Wi-Fi & USB connectivity options make it possible for busy mobile workers to print on site or in the field.



RJ Series mobile printers



Rugged design

Due to the nature of many mobile applications, printers may be exposed to a range of outdoor conditions which can affect the print operation or cause damage, e.g. a traffic warden printing in the field. However, all RJ printers are tested against IP54 protection standards, offering that extra peace of mind for such outdoor applications subject to damp / moisture or indoor environments where dust is present. In addition, the RJ range is drop tested up to 2.5 metres to provide extra credibility in terms of toughness and reliability.



RJ Series

Up to 2 inch



RJ-2035B



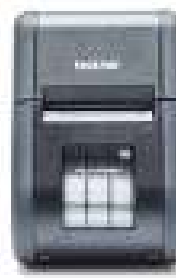
RJ-2055WB



RJ-2030



RJ-2050



RJ-2140



RJ-2150

Up to 3 inch



RJ-3035B



RJ-3055WB



RJ-3230BL



RJ-3250WBL

Up to 4 inch



RJ-4230B



RJ-4250WB

Trust RJ Series mobile printers to take on every application

Retail

Increase efficiency for retailers with lightweight, durable and easy to use mobile printers. This provides staff with a simple and accurate labelling and receipt solution, perfect for pricing, promotions and queue-busting to increase customer satisfaction.



Applications include:

- Shelf edge labels
- 'Queue busting' receipt printing
- Mark down or discount labels
- Price labels
- Food traceability labelling
- Click and collect labels



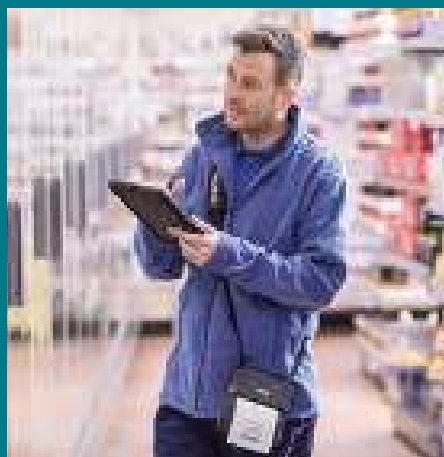
Direct Store Deliveries

Delivery drivers need to be equipped with a seamless solution to help streamline their workflow and minimise downtime. Mobility and integration is key, so drivers have access to systems providing pricing, invoicing, inventory control, and customer information. This makes it easier to produce invoices on-site.



Applications include:

- Sales orders and confirmations
- Returned goods receipts and labels
- Customer receipts
- Delivery receipts



Field Service

Whether you need receipts or smaller format labels, without a mobile print solution, handwritten documents are time consuming and prone to error. That's why most businesses are empowering their workforce with mobile technology, meaning they complete tasks on the move, professionally and on schedule.



Applications include:

- Receipts and invoices
- Repair estimates
- Statements of work
- Work orders
- Estimates and quotations
- Maintenance and service reports



RJ Series

Public Safety

Increase operational efficiency by allowing law enforcement officers and emergency staff to document and report incidents more accurately and efficiently, at the point of interaction. With their durable design, fast print speed & reliable operation, the range offers a competitive combination of performance and features.



Applications include:

- Parking violations
- Recording of accidents and crime scenes
- Electronic citations and fines
- Warning Notices



Warehousing

Efficient warehousing operations and worker productivity are critical to the success of many companies. Using wireless connectivity, the Brother RJ mobile printer range provides workers with the ability to print barcode labels on-demand, at the point of application. This saves time and reduces potential errors caused by mislabelling.



Applications include:

- Work-in-progress labels
- Bin and shelf labels
- Shipping and despatch labels
- Inventory pick and return tickets



RJ series range brief summary

RJ-2035B	RJ-2055WB	RJ-2030	RJ-2050	RJ-2140	RJ-2150
2 Inch					

Printing

Print technology	Direct thermal		
Print speed	101.6mm/sec	152mm/sec	
Resolution	203dpi		
Max print width	48mm (receipt)	54mm (receipt)	54mm (receipt) 51mm (label)

Media Types

Receipt	●	●	●	●	●	●
Labels					●	●

Connectivity

USB	●	●	●	●	●	●
Wireless LAN		●		●	●	●
Bluetooth	●	●	●	●		●
AirPrint				●	●	●
MFi	●			●		●

General

IP rating	IP42 (IP54 with optional case)	IP54	
Drop protection (metres)	1.8 (2.5 with optional case)	2.5	
Weight (with battery)	215g	465g	545g
Dimensions (mm)	79(w) 36.5(h) 116(d)	122(w) 57(h) 100(d)	151(w) 73(h) 100(d)
Operating system support	Microsoft® Windows® 7 Windows® 8.1 Windows® 10 Windows® Server 2012, 2012 R2, 2016, 2019 Linux Mac OS v10.11-10.15	Microsoft® Windows® 7 Windows® 8 Windows® 8.1 Windows® 10	Microsoft® Windows® 7 Windows® 8 Windows® 8.1 Windows® 10 Windows® Server 2008, 2008 R2, 2012, 2012 R2, 2016, 2019
Mobile OS	Android / iOS	Android	Android / iOS
Supported commands	FBPL-EZC (EPL2/ZPL2/CPCL) FBPL-EZP (EPL2/ZPL2/ESC-POS) - download	P-touch Template, ESC/P, Raster, ZPL II emulation, CPCL emulation	

RJ series range brief summary

RJ-3035B	RJ-3055WB	RJ-3230BL	RJ-3250WBL	RJ-4230B	RJ-4250WB
3 Inch				4 Inch	

Printing

Print technology	Direct thermal			Direct thermal	
Print speed	101.6mm/sec		127mm/sec		127mm/sec
Resolution	203dpi			203dpi	
Max print width	72mm			104mm	

Media Types

Receipt	●	●	●	●	●	●
Labels		●	●	●	●	●

Connectivity

USB	●	●	●	●	●	●
Wireless LAN		●		●		●
Bluetooth	●	●	●	●	●	●
AirPrint				●		●
MFi	●		●	●	●	●

General

IP rating	IP42 (IP54 with optional case)		IP54		IP54
Drop protection (metres)	1.8 (2.5 with optional case)		2.0		2.1
Weight (with battery)	375g	375g	807g	807g	850g
Dimensions (mm)	105(w) 49.5(h) 116(d)	105(w) 49.5(h) 116(d)	117(w) 77(h) 180(d)	117(w) 77(h) 180(d)	153(w) 68(h) 159(d)
Operating system support	Microsoft® Windows® 7 Windows® 8.1 Windows® 10 Windows® Server 2012, 2012 R2, 2016, 2019 Linux Mac OS v10.11-10.15		Microsoft® Windows® 7, 8.1, 10 Windows® Server 2012, 2012 R2, 2016, 2019		Microsoft® Windows® 7 Windows® 8 Windows® 8.1 Windows® 10 RJ-4250WB also supports: Microsoft® Windows Server® 2008 2008 R2 / 2012 / 2012 R2 / 2016
Mobile OS	Android / iOS				Android / iOS
Supported commands	FBPL-EZC (EPL2/ZPL2/CPCL) FBPL-EZP (EPL2/ZPL2/ESC-POS) - downloadable		P-touch Template, ESC/P, Raster, ZPL II emulation, CPCL emulation		P-touch Template, ESC/P, Raster, ZPL II emulation, CPCL emulation

**Customise
your RJ printer
with the great
range of
accessories**



Accessories and print supplies

Brother has designed and engineered a wide range of accessories to help customise the solution, whatever your requirement. Brother accessories help workers to equip their device in-vehicle and on-body. Power options also help with increased battery demands.

Power Options

PA-BT-003

Li-ion rechargeable Battery

RJ-2030 | RJ-2050
RJ-2140 | RJ-2150



PA-BT-006

Rechargeable Li-ion smart Battery

RJ-3230BL |
RJ-3250WBL
RJ-4230B | RJ-4250WB



PA-BT-008

Li-ion rechargeable battery (Standard)

RJ-2035B |
RJ-2055WB



PA-BT-009

Li-ion rechargeable battery (Standard)

RJ-3035B |
RJ-3055WB



PA-BT-010

Li-ion rechargeable battery (Smart)

RJ-3035B |
RJ-3055WB



PA-AD-600AUK

AC Adapter (UK)

RJ-2030 | RJ-2050
RJ-2140 | RJ-2150
RJ-3230BL | RJ-3250WBL
RJ-4230B | RJ-4250WB



PA-AD-600AEU

AC Adapter (EU)

RJ-2030 | RJ-2050
RJ-2140 | RJ-2150
RJ-3230BL | RJ-3250WBL
RJ-4230B | RJ-4250WB



PA-CD-600CG

Car Adaptor (cigarette)

RJ-2030 | RJ-2050
RJ-2140 | RJ-2150
RJ-3230BL | RJ-3250WBL
RJ-4230B | RJ-4250WB



PA-CD-600WR

Car Adapter (wired)

RJ-2030 | RJ-2050
RJ-2140 | RJ-2150
RJ-3230BL | RJ-3250WBL
RJ-4230B | RJ-4250WB



PA-BEK-001WR

Battery Eliminator Kit Wired Type

RJ-3230BL | RJ-3250WBL
RJ-4230B | RJ-4250WB



PA-BEK-001CG

Battery Eliminator Kit Cigarette Socket Type

RJ-3230BL | RJ-3250WBL
RJ-4230B | RJ-4250WB



PA-CD-001CG

12-24V DC automobile cigarette lighter

RJ-2035B | RJ-3035B
RJ-2055WB
RJ-3055WB



Accessories

PA-BC-002

Battery Charging Unit (single)

RJ-2030 | RJ-2050
RJ-2140 | RJ-2150



PA-BC-003

Battery Charging Unit (single)

RJ-3230BL | RJ-3250WBL
RJ-4230B | RJ-4250WB



PA-CR-005**

1-slot charging cradle with Ethernet

RJ-3230BL | RJ-3250WBL



PA-CR-002A**

Car Mount/ Charging Cradle

RJ-4230B | RJ-4250WB



PA-SS-4000

Shoulder Strap

RJ-2030 | RJ-2050
RJ-2140 | RJ-2150
RJ-3230BL | RJ-3250WBL
RJ-4230B | RJ-4250WB



PA-CC-002

IP54 protective case with shoulder strap

RJ-2035B
RJ-2055WB



PA-CC-003

IP54 protective case with shoulder strap

RJ-3035B
RJ-3055WB



PA-BC-005 (EU) PA-BC-005 (UK)

1-slot battery charger

RJ-3035B
RJ-3055WB



PA-4BC-001 (EU) PA-4BC-001 (UK)

4-slot battery charger

RJ-2035B
RJ-2055WB



PA-4BC-002 (EU) PA-4BC-002 (UK)

4-slot battery charger

RJ-3035B
RJ-3055WB



PA-CR-003

1-slot docking cradle

RJ-2035B
RJ-2055WB



PA-CR-004

1-slot docking cradle

RJ-3035B
RJ-3055WB



PA-4CR-001

4-slot docking cradle

RJ-2035B
RJ-2055WB



PA-4CR-002

4-slot docking cradle

RJ-3035B
RJ-3055WB



PA-4CR-003**

4-slot charging cradle with Ethernet

RJ-3230BL
RJ-3250WBL



PA-LPR-001

Linerless Platen Roller

RJ-4230B
RJ-4250WB



PA-LPR-002*

Linerless platen roller

RJ-2035B
RJ-2055WB



PA-LPR-003*

Linerless platen roller

RJ-3035B
RJ-3055WB



PA-LPR-004

Linerless platen roller

RJ-3230BL
RJ-3250WBL



PA-LP-007

Peeler

RJ-3230BL
RJ-3250WBL



PA-SS-001

Shoulder strap with adaptor

RJ-2035B
RJ-2055WB
RJ-3035B
RJ-3055WB



PA-RS-001

Roll spacer

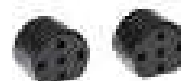
RJ-2035B
RJ-2055WB



PA-RS-002

Roll spacer

RJ-3035B
RJ-3055WB



PA-RH-002

Roll holder

RJ-3035B
RJ-3055WB



Media Options

BDL-7J000058-040

Continuous Receipt Roll

RJ-2030 | RJ-2050
RJ-2140 | RJ-2150
RJ-3230BL | RJ-3250WBL
RJ-4230B | RJ-4250WB

Roll Size:
58mm x 13.8m
Colour: white



BDL-7J000076-066

Continuous Receipt Roll

RJ-3230BL | RJ-3250WBL

Roll Size:
76mm x 42m
Colour: white



BDL-7J000102-058

Continuous Receipt Roll

RJ-4230B | RJ-4250WB

Roll size:
101.6mm x 32.2m
Colour: white



BDE-1J026051-060

Die Cut Labels Roll

RJ-2140 | RJ-2150

Label size:
51mm x 26mm
Colour: white
Quantity: 500

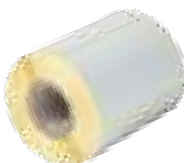


BDE-1J044076-066

Die-cut Labels Roll

RJ-3230BL | RJ-3250WBL

Label Size:
76mm x 44m
Colour: white
Quantity: 400

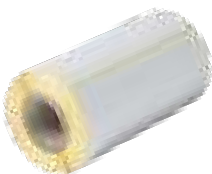


BDE-1J152102-058

Die-cut Labels Roll

RJ-4230B | RJ-4250WB

Label Size:
102mm x 152mm
Colour: white
Quantity: 85



BDE-1J000057-030

Continuous Receipt Roll

RJ-2035B | RJ-2055WB

Roll Size:
57mm x 6.6m
Colour: white



BDE-1J000079-040

Continuous Receipt Roll

RJ-3035B | RJ-3055WB

Roll Size:
79mm x 14m
Colour: white



BDE-1J044076-040

Die Cut Labels Roll

RJ-3055WB

Label size:
76mm x 44mm
Colour: white
Quantity: 70 per roll



Brother provides all the necessary tools required for software developers to integrate printing into their mobile applications. Printer drivers are available for Windows OS, and Software Development Kits can be provided to support Windows Mobile*, Android and iOS operating systems.

Software Support Features

Template mode

Design the required document on your Windows PC, including logos and barcodes. Once transferred and stored in the printer's memory, the template can be recalled and any data replaced, before printing with just a few short commands.

AirPrint* and MFi* support

Easily connect to, and print from Apple devices thanks to AirPrint and MFi support.





Mobile Deploy*

Cloud-based app for mobile devices (iOS and Android™), which allows IT administrators to remotely update and configure multiple Brother mobile printers. Using Mobile Deploy, the administrator can easily upload new update packages to an online location, and then share the URLs with the users.

Printer Commands*

With support for ZPL II emulation, CPCL emulation in addition to ESC-POS commands, developers can easily integrate mobile printing into existing legacy systems.

<https://support.brother.com/g/s/es/dev/en/index.html>



* Check model compatibility

**Helping keep
your workforce
agile when
printing on
the move**



RJ series range

2 inch

RJ-2035B	RJ-2055WB	RJ-2030	RJ-2050	RJ-2140	RJ-2150
2 Inch					

Printing / Media

Print technology	Direct thermal		
Print resolution	203dpi		
Print speed	Maximum 4ips (101.6mm/sec)	Maximum 6ips (152mm/sec)*	
Maximum print width on receipt	48mm	54mm	
Maximum print length	2794mm	1000mm	
Media sensor type	Reflective		Transmissive / Reflective
Cutter type	Tear bar		
Media types	Receipt	Receipt, label**	Receipt, label, tag label
Receipt width	58mm max		
Receipt paper thickness	2.3-3.5 mils (0.058-0.090mm)		
Label width	-		55mm
Label thickness	-		3.1-6.7 mils (0.080-0.170mm)
Roll diameter	30mm max	40mm max	60mm max
Core diameter (min)	-	10.2mm	

LCD

Type	-	Backlit monochrome LCD
------	---	------------------------

Connectivity

USB	USB v2.0 (Micro-USB connector)		USB v2.0 full-speed (mini-B connector)			
Bluetooth	v5.0	v4.2	v2.1+EDR			
Bluetooth profiles	SPP (Serial Port Profile), GATT (Low Energy) / iAP supported	SPP (Serial Port Profile) GATT (Low Energy)	SPP (Serial Port Profile) OPP (Object Push Profile) BIP (Basic Imaging Profile) HCRP (Hard Copy Cable Replacement Profile)	SPP (Serial Port Profile) OPP (Object Push Profile) BIP (Basic Imaging Profile) HCRP (Hard Copy Cable Replacement Profile) iAP supported		
MFfi support	Yes	-	-	Yes	-	Yes
Wireless LAN	-	Wireless LAN IEEE802.11a/b/g/n	-	IEEE802.11b/g/n Infrastructure mode: [b/g/n] Adhoc mode: [b/g/n] Wireless direct mode: [g/n]		
Wireless LAN security (AdHoc mode)	-	-	-	None / WEP		
Wireless LAN security (Infrastructure mode)	-	Open system (None/WEP64/WEP128) Common key authentication (WEP) WPA/WPA2-PSK (TKIP+AES) EAP-FAST (TKIP/AES) PEAP (TKIP/AES) *3 EAP-TLS (TKIP/AES) EAP-TTLS (TKIP/AES) Authentic method (encryption scheme)	-	None/WEP64/WEP128 Common key authentication (WEP) WPA/WPA2-PSK (TKIP+AES) LEAP (CKIP) EAP-FAST (TKIP/AES) PEAP (TKIP/AES) *3 EAP-TLS (TKIP/AES) EAP-TTLS (TKIP/AES)		
Wireless LAN security (Wireless direct mode)	-	-	-	None / WPA2-PSK (AES) / WEP		
NFC	Yes	Yes	-	-		

* Under Brother standard environment

** With black mark only

RJ-2035B	RJ-2055WB	RJ-2030	RJ-2050	RJ-2140	RJ-2150
2 Inch					

Software / Firmware

Operating system support

	Microsoft® Windows® 7 Windows® 8.1 Windows® 10, Windows® 2012, 2012 R2, 2016, 2019 Linux Mac OS v10.11-10.15	Microsoft® Windows Vista®/ Windows® 7 / Windows® 8 Windows® 8.1 / Windows® 10, Android 4.0.3 or higher (SDK)	Microsoft® / Windows Vista® / Windows® 7 / Windows® 8 Windows® 8.1 / Windows® 10, Windows® Server 2008, 2008 R2, 2012, 2012 R2, 2016, 2019 Android 4.0.3 or higher (SDK) iOS 6 or higher (SDK)
SDK availability (visit https://www.brother.co.jp/eng/dev/)	Android v5 – v10 iOS v9 – v13.2	b-PAC (for Windows) Android 4.0.3 or higher (SDK) iOS 6 or higher (SDK)	
Supported printer commands	FBPL-EZC (EPL2/ZPL2/CPCL) FBPL-EZP (EPL2/ZPL2/ESC-POS) - downloadable	ZPLII emulation, CPCL emulation ESC/P, P-touch Template, Raster	
Barcode symbologies	Linear: Code128UCC, Code128 subsets A, B, C, EAN128, Interleaved 2 of 5, Interleaved 2 of 5 with check digit, Standard 2 of 5, Industrial 2 of 5, Code39, Code39 with check digit, Code93, EAN13, EAN8, UPCA, UPCE, EAN and UPC 2 (5) digits add-on, Codabar, Postnet, MSI, MSI with check digit, PLESSEY, China post, ITF14, EAN14, Code11, TELEPEN, TELEPEN number, PLANET, Code49, Deutsche Post Identcode, Deutsche Post Leitcode, LOGMARS 2-dimensional: CODABLOCK F mode, GS1 DataBar, GS1 DataMatrix, Maxicode, AZTEC, PDF417, QR Code, Micro PDF417, TLC39	CODE39 / ITF (I-2/5) / EAN-13 / EAN-8 / UPC-A / UPC-E / CODABAR / CODE128 / GS1-128(UCC/EAN-128) / RSS symbols / CODE93 / POSTNET / UPC/EAN EXTENSION / MSI / QR Code (model 1, model 2, micro QR) / PDF417 (Standard, Truncate, MicroPDF417) / Data Matrix (ECC200 Square, ECC200 Rectangular) / MaxiCode / Aztec	

Memory

RAM	32MB	
Flash	16MB	32MB (12MB available for template upload)

Environmental

Drop protection	2.5m (with IP54 optional case)	2.5m
Sealing	IP54 (with optional case)	IP54
Operating temperature	-15C to +50C	Operating: -10C to +50C / Charging: 0C to +40C
Operating humidity	10%-90% / Maximum wet bulb: +27C (no condensation)	
Storage temperature	-30C to +70C	-20C to +60C for 120 hours maximum
Storage humidity	10% to 90% non-condensing	+45C @ 95% for 120 hours maximum

Power

Battery	Rechargeable Li-ion	
AC adapter	AC adapter (15 V) only for charging (50/60Hz)	100-240V AC (50/60Hz) to 15V DC (only for charging) (optional)
Car adapter (optional accessory)	12V DC (only for charging)	

Weights / Dimensions

Dimensions (mm)	79(w) x 36.5(h) x 116(d)	122(w) x 57(h) x 100(d)	151(w) x 73(h) x 100(d)
Weight (including battery)	215g	465g	545g

Included items

Supplied in box	Belt clip, documentation, power adaptor, battery	Battery, belt clip, documentation
-----------------	---	-----------------------------------

RJ series range

3 & 4 inch

RJ-3035B	RJ-3055WB	RJ-3230BL	RJ-3250WBL	RJ-4230B	RJ-4250WB
3 Inch				4 Inch	

Printing / Media

Print technology	Direct thermal			Direct thermal	
Print resolution	203dpi			203dpi	
Print speed	Maximum 4ips (101.6mm/sec)		Maximum 127mm/second (5ips)	Maximum 127mm/second (5ips)	
Maximum print width on receipt	72mm			104mm	
Maximum print length	2794mm		3000mm	3000mm	
Media sensor type	Reflective	Transmissive / Reflective		Transmissive / Reflective	
Cutter type	Tear bar		Double tear bar	Double tear bar	
Media types	Receipt	Receipt / label	Receipt/label/tag	Receipt / label / Tag label	
Receipt width	80mm			113mm	
Receipt paper thickness	2.3-3.5 mils (0.058-0.090mm)			2.2 mil to 3.5 mil (0.058mm to 0.090mm)	
Label width	-		76mm	113mm	
Label thickness	-		-	3.1 mil to 6.6 mil (0.080mm to 0.170mm)	
Roll diameter	40mm max		66mm max	58mm max	
Core diameter	-		Standard : 25.4mm (Default) In-box : 12.7mm-13.0mm or 19.0mm	12.7mm (receipt) / 25.4mm (labels)	

LCD

Type	-	Mono	Mono
------	---	------	------

Connectivity

USB	Yes		Yes (USB-C)		Yes	
USB host capability	-		No		-	
Bluetooth	v5.0	v4.2	v5.0		v4.2	
Bluetooth profiles	SPP (Serial Port Profile), GATT (Low Energy)/ iAP supported	SPP (Serial Port Profile) GATT (Low Energy)	SPP (Serial Port Profile) OPP (Object Push Profile) HCRP (Hard Copy Cable Replacement Profile) iAP supported Low Energy: GATT		Classic: SPP (Serial Port Profile) OPP (Object Push Profile) HCRP (Hard Copy Cable Replacement Profile) iAP supported Low Energy: GATT	
MFi support	Yes	No	Yes		Yes	
Wireless LAN	-	Wireless LAN IEEE802.11a/b/g/n	-	IEEE802.11a/b/g/n/i/r Infrastructure mode: IEEE802.11a/b/g/n/i/r Wireless Direct mode: IEEE802.11g/n/d/i	-	Wireless LAN IEEE802.11 [a/b/g/n] (Infrastructure mode: [a/b/g/n] / Wireless direct mode: [g/n])
Wireless LAN security (AdHoc mode)	-	-	-	Authentic method (encryption scheme)	-	
Wireless LAN security (Infrastructure mode)	-	Authentic method (encryption scheme) Infrastructure mode: Open system (None/ WEP64/WEP128) WPA/WPA2-PSK (TKIP+AES) EAP-FAST (TKIP/AES) PEAPv0 (TKIP/AES) EAP-TLS (TKIP/AES) EAP-TTLS (TKIP/AES)	-	SSL/TLS1.0/1.1/1.2 (HTTPS, IPPS) SNMPv3, 802.1x (EAP-FAST, PEAP, EAP-TLS, EAP-TTLS) WEP 64/128 bit, WPA-PSK (TKIP/AES), WPA2-PSK (AES), WPA3-SAE (AES)	-	Open system (None/ WEP64/WEP128) Common key authentication (WEP) WPA/WPA2-PSK (TKIP+AES) EAP-FAST (TKIP/AES) PEAP (TKIP/AES) *3 EAP-TLS (TKIP/AES) EAP-TTLS (TKIP/AES)
Wireless LAN security (Wireless direct mode)	-	-	WPA2-PSK (AES)	WPA2-PSK (AES)	-	WPA2-PSK (AES)
NFC	Yes	Yes	Yes (Passive only)		Yes (Passive only)	

* Black mark only

RJ-3035B	RJ-3055WB	RJ-3230BL	RJ-3250WBL	RJ-4230B	RJ-4250WB
3 Inch				4 Inch	

Software / Firmware

Operating system support

Visit: <http://support.brother.com> for latest OS support

	<p>Microsoft® Windows® 7 Windows® 8.1 Windows® 10 Windows® Server 2012, 2012 R2, 2016, 2019 Linux Mac OS v10.11-10.15</p>	<p>Microsoft® Windows® 7, 8.1, 10 Windows® Server 2012, 2012 R2, 2016, 2019</p>	<p>Microsoft® Windows Vista® / Windows®8 Windows®8.1 / Windows®10 / Windows®8 Microsoft® Windows Server® 2003 / 2008 / 2008 R2 / 2012 / 2012 R2</p>
<p>SDK availability https://support.brother.com/g/s/es/dev/en/index.html</p>	<p>Android v5 - v10 iOS v9 - v13.2</p>	<p>Android v6 - v11 iOS v10 - v14</p>	<p>Android 4.0.3 or later iOS 7 or later</p>
Supported printer commands	<p>FBPL-EZC (EPL2/ZPL2/CPCL) FBPL-EZP (EPL2/ZPL2/ESC-POS) - downloadable</p>	<p>Raster, ESC/P, P-touch Template, ZPL II emulation, CPCL emulation</p>	<p>Raster, ESC/P, P-touch Template, ZPL II emulation, CPCL emulation</p>
<p>Barcode symbologies</p> <p>Supported barcodes depend on printer commands. Please refer to the command reference for details.</p>	<p>Linear: Code128UCC, Code128 subsets A, B, C, EAN128, Interleaved 2 of 5, Interleaved 2 of 5 with check digit, Standard 2 of 5, Industrial 2 of 5, Code39, Code39 with check digit, Code93, EAN13, EAN8, UPCA, UPCE, EAN and UPC 2 (5) digits add-on, Codabar, Postnet, MSI, MSI with check digit, PLESSEY, China post, ITF14, EAN14, Code11, TELEPEN, TELEPEN number, PLANET, Code49, Deutsche Post Identcode, Deutsche Post Leitcode, LOGMARS, 2-dimensional: CODABLOCK F mode, GS1 DataBar, GS1 DataMatrix, Maxicode, AZTEC, PDF417, QR Code, Micro PDF417, TLC39</p>	<p>CODE39, CODE93, ITF(I-2/5), EAN-8, EAN-13, UPC-A, UPC-E, CODABAR(NW-7), CODE128, GS1-128(UCC/EAN-128), GS1 DataBar (Standard, Truncated, Stacked, Stacked Omnidirectional),GS1 DataBar Limited, GS1 DataBar Expanded (Standard, Stacked), POSTNET, UPC/EAN EXTENSION, MSI, Intelligent Mail Barcode, QR Code, Micro QR Code, PDF417, MicroPDF417, MaxiCode, DataMatrix, Aztec</p>	<p>Linear: CODE 39, ITF(I-2/5), EAN-8, EAN-13, UPC-A, UPC-E, UPC/EAN EXTENSION CODABAR, CODE 128, GS1-128 (UCC/EAN 128), POSTNET, GS1 Databar (Omnidirectional / Truncated / Stacked / Stacked Omnidirectional / Limited / Expanded / Expanded Stacked) CODE93, MSI/Plessey Intelligent Mail Barcode</p> <p>2-dimensional: QR Code (model 1, model 2, micro QR), Maxi code, PDF417 (Standard, Truncate) MicroPDF417, Data Matrix (Square, Rectangular) AztecCode</p>

Memory

RAM	32MB	256MB	256MB
Flash	16MB	128MB	64MB

Environmental

Drop protection	2.5 metres (with optional IP54 case)	2 metres	2.1 metres
Sealing	IP54 (with optional case)	IP54	IP54
Operating temperature	-15 to 50°C	Operate: -20°C to 55°C Charging: 0°C to 40°C	Battery: -20°C to 55°C AC adapter: -10°C to 40°C. Car adapter: -10°C to 50°C
Operating humidity	10-90%, Max wet bulb: 27 deg C (No condensation)	10% to 90% non-condensing	10-90%, Max wet bulb: 27 deg C (No condensation)
Storage temperature	-30C to +70 deg C	-20°C to 60°C	-20C to +60 deg C
Storage humidity	10% to 90% non-condensing	10% - 90% non-condensing	10% - 90%, Max wet bulb: 45 deg C (No condensation)

Power

Battery	Rechargeable Li-ion	Rechargeable Li-ion smart battery	Rechargeable Li-ion smart battery (optional)
AC adapter	AC adapter (15 V) only for charging (50/60Hz)	AC adapter (15 V) only for charging (optional)	AC adapter (15 V) only for charging (50/60Hz) (optional)
Car adapter (optional accessory)	Cigarette car adapter or Wired type (12 V (DC)) only for charging		

Weights / Dimensions

Dimensions (mm)	105 (W) x 49.5 (H) x 116 (D) mm		117 (W) x 77 (H) x 180 (D) mm		153(w) x 68h) x 159(d) mm
Weight (including battery)	375g	375g	807g	807g	850g

Included items

Supplied in box	<p>Belt clip Documentation Power adaptor Battery</p>	<p>Belt Clip Li-ion battery Roll Holder Stop Media discs Documentation</p>	<p>Printer Belt clip Adjuster guide lockers</p>
-----------------	--	--	---

brother

at your side

Contact:

www.brother.eu

Brother International Europe Ltd

Brother House, 1 Tame Street, Audenshaw,
Manchester M34 5JE

Tel: +44(0)161 330 6531

Fax: +44(0)161 330 5520

All specifications correct at the time of printing and are subject to change. Brother is a registered trademark of Brother Industries Ltd.
Brand product names are registered trademarks or trademarks of their respective companies.