

HP ProBook x360 11 G5 EE Notebook PC



The rugged x360 built for schools and adaptable to every style of learning

Inspire limitless learning with the HP ProBook x360 11 G5 Education Edition that easily flips and folds to suit all the ways students like to learn, in and out of class. Exclusive HP software tools make it just as easy for IT to secure and manage.



*Product image may differ from actual product

HP recommends Windows 10 Pro for business

Engineered to keep pace with busy students

- Deploy a device that can work if it falls off a desk², is splashed with a soda³ or has the power cord yanked out. It resists spills and attempts to remove keys, has metal-reinforced corners, and is 122 cm² drop tested—higher than most desks.

Immersive 360° multi-modal learning

- Let students learn the way they want—by typing, touching, writing, capturing, drawing, and reading on one flexible device. Add the optional active HP Pro Pen G1⁴ that has enhanced durability and an all-year⁵ battery for precise onscreen interactions.

IT-friendly manageability and security

- Get a device with built-in HP-exclusive software that makes it easy to manage and protect on campus and off, even with limited IT resources. And keep students and teachers safe from remote prying eyes with the HP Privacy Camera.
- Enable students to move quickly between writing documents, running simulations, and editing videos with the latest Intel® processors.⁶
- Say goodbye to downtime from damage with Corning® Gorilla® Glass, rubber bumpers, an anchored keyboard that resists spills to 12 oz (330 ml), and a reinforced power port and corners in a design that undergoes MIL-STD 810H and education testing.^{3,7}
- Give students an easy-to-grip chassis that also hides fingerprints and smudges.
- Spend more time learning with a long battery life and HP Fast Charge, which recharges the battery to 90% in 90 minutes through AC or USB-C™ adapters. Make sure devices are ready after summer with ship mode, which activates after 21 days off.^{8,9}
- Encourage hands-on learning with the interactive touchscreen and optional active HP Pro Pen G1. It has a reinforced cone and tips built for prolonged use and a battery that lasts the entire school year.^{4,5}
- Foster unique, personalized learning styles with a device that flips into five modes—laptop, stand, tent, book, and tablet—on our first rugged convertible to support book mode.
- Unleash creativity with the user-facing camera for recording video, broadcasting live, and remote collaboration, or the optional world-facing 5MP 2nd camera for real-time recording monitoring.¹⁰
- Get online quickly with our first rugged education convertible with optional Wi-Fi 6 (802.11ax) with MU-MIMO and HP Extended Range Wireless LAN. 15 Use the RJ-45 if wireless isn't available.^{10,11,12,13}
- Put a new spin on classroom interaction with our most advanced activity light in a rugged convertible that allows spontaneous group breakout sessions, moderated Q&As, and easy visual ID of online status.
- Never wonder if someone is watching you over the network with our first rugged education convertible with an integrated privacy camera. The HP Privacy Camera's physical shutter protects users from malicious surveillance.
- Say goodbye to sticky devices with a keyboard that can be repeatedly wiped down with common household cleaning wipes, even while on, thanks to HP Easy Clean 2.0.^{14,15}
- Keep productivity high and downtime low with HP BIOSphere Gen5 firmware-level automation. Your PCs have extra protection thanks to automatic updates and security checks.¹⁶

HP ProBook x360 11 G5 EE Notebook PC Specifications Table



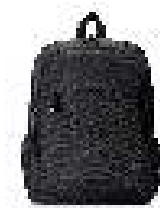
*Product image may differ from actual product

Available Operating Systems	Windows 10 Pro (Windows 10 Enterprise available with a Volume Licensing Agreement) ¹
	Windows 10 Home 64 – HP recommends Windows 10 Pro for business ¹
	Windows 10 Home Single Language 64 ¹
	Windows 10 Pro in S mode ³
	Windows 10 Pro in S mode 64 (National Academic only) ^{2,3}
Processor family ⁶	Intel® Pentium® Silver processor; Intel® Celeron® processor
Available Processors ^{4,5,6}	Intel® Pentium® Silver N5000 with Intel® UHD Graphics 605 (1.1 GHz base frequency, up to 2.7 GHz burst frequency, 4 MB cache, 4 cores); Intel® Celeron® N4120 with Intel® UHD Graphics 600 (1.1 GHz base frequency, up to 2.6 GHz burst frequency, 4 MB cache, 4 cores); Intel® Celeron® N4100 with Intel® UHD Graphics 600 (1.1 GHz base frequency, up to 2.4 GHz burst frequency, 4 MB cache, 4 cores); Intel® Celeron® N4020 with Intel® UHD Graphics 600 (1.1 GHz base frequency, up to 2.8 GHz burst frequency, 4 MB cache, 2 cores); Intel® Celeron® N4000 with Intel® UHD Graphics 600 (1.1 GHz base frequency, up to 2.6 GHz burst frequency, 4 MB cache, 2 cores); Intel® Pentium® Silver N5030 with Intel® UHD Graphics 605 (1.1 GHz base frequency, up to 3.1 GHz burst frequency, 4 MB cache, 4 cores)
Brightness	220 nits
Maximum memory	4 GB DDR4-2400 SDRAM Memory soldered down.
Internal storage	128 GB up to 256 GB M.2 SATA-3 SSD TLC ^{8,9} up to 64 GB eMMC ⁸
Display size (diagonal, metric)	29.46 cm (11.6")
Display	29.5 cm (11.6") diagonal, HD (1366 x 768), touch, SVA, 220 nits, 45% NTSC; 29.5 cm (11.6") diagonal, HD (1366 x 768), touch, IPS, 220 nits, 45% NTSC ^{7,12,13,34}
Available Graphics	Integrated: Intel® UHD Graphics 605; Intel® UHD Graphics 600 ¹² (Support HD Decode, DX12, and HDMI 1.4b.)
Audio	HD audio, dual speakers
Wireless technologies	Intel® Dual Band Wireless-AC 9560 802.11a/b/g/n/ac (2x2) Wi-Fi® and Bluetooth® 5 Combo, non-vPro™; Intel® AX200 Wi-Fi 6 (2x2) and Bluetooth® 5 Combo, non-vPro™ ^{10,32} (Compatible with Miracast-certified devices.)
Ports and Connectors	2 USB 3.1 Gen 1; 1 USB Type-C® (Data transfer, power delivery); 1 RJ-45; 1 headphone/microphone combo; 1 HDMI 1.4b; 1 AC power (HDMI cable sold separately.)
Input devices	Full-size chiclet keyboard; Clickpad with multi-touch gesture support, taps enabled as default;
Communications	Realtek RTL8111EP 10/100/1000 GbE NIC ¹¹ ; Intel® Dual Band Wireless-AC 9560 802.11a/b/g/n/ac (2x2) Wi-Fi® and Bluetooth® 5 combo, non-vPro®; Intel® Wi-Fi CERTIFIED 6™ AX200 (2x2) and Bluetooth® 5 combo, non-vPro®; MediaTek 8852AE Wi-Fi CERTIFIED 6™ (2x2) and Bluetooth® 5.2 combo, non-vPro®;
Camera	720p HD camera (user-facing); 5 MP camera (world-facing) ^{12,13,14}
Available software	HP Connection Optimizer; HP Image Assistant; HP Hotkey Support; HP JumpStart; HP Noise Cancellation Software; HP School Pack; HP Support Assistant; Native Miracast support; Buy Office (Sold separately); HP Interactive Light ^{16,32}
Security management	Absolute persistence module; HP DriveLock and Automatic DriveLock; HP Secure Erase; Power-on authentication; Preboot authentication; TPM 2.0 embedded security chip shipped with Windows 10 (Common Criteria EAL4+ Certified); HP Sure Click; Windows Defender; HP BIOSphere Gen5; HP Client Security Gen5; BIOS Update via Network; Master Boot Record Security; Support for chassis padlocks and cable lock devices ^{19,20,21,22,23,24,25,26}
Fingerprint reader	Fingerprint reader not available
Management features	HP Driver Packs; HP System Software Manager (SSM); HP BIOS Config Utility (BCU); HP Client Catalog; HP Manageability Integration Kit Gen3 ^{17,18}
Power	HP Smart 45 W External AC power adapter ²⁹
Battery type	HP Long Life 3-cell, 48 Wh Li-ion ²⁸
Dimensions	30 x 20.53 x 2.12 cm
Weight	Starting at 1.43 kg (Weight will vary by configuration.)
Energy efficiency compliance	ENERGY STAR® certified; EPEAT® 2019 Gold ³¹
Sustainable impact specifications	TCO 8.0 Certified
Warranty	1 year standard parts and labor limited warranty (1-1-0), depending on country (upgrades available). 1 year limited warranty on primary battery.

HP ProBook x360 11 G5 EE Notebook PC

Accessories and services (not included)

HP Prelude Pro Recycled Backpack



Commute with a stylish and durable backpack thoughtfully designed with the environment in mind and made with recycled fabric¹. The HP Prelude Pro Recycled Backpack comes with safety features for your peace of mind when you carry your devices from work to home and beyond.
Product number: 1X644AA

HP Reversible 11.6-inch Sleeve



Help protect your laptop¹ on the go with the ultralight HP Reversible 11.6 Sleeve that keeps it safe and lets you make a bold statement or be a little conservative—you decide.
Product number: 7ZE81AA

HP Pro Pen G1



Take notes, navigate, draw, doodle, and edit onscreen with the resilient, multifunction, long-life HP Pro Pen.
Product number: 8JU62AA

HP 3 year Next Business Day Onsite
Notebook Only Service



Receive 3 years of next business day onsite HW support from an HP-qualified technician for your computing device, if the issue cannot be solved remotely.
Product number: 3JF59AV

HP ProBook x360 11 G5 EE Notebook PC

Messaging Footnotes

- ² Drop test is not a guarantee of future performance under these test conditions. Any accidental damage requires an optional HP Accidental Damage Protection Care Pack.
- ³ HP Total Test Process testing is not a guarantee of future performance under these test conditions. Any accidental damage requires an optional HP Accidental Damage Protection Care Pack.
- ⁴ Sold separately or as an add-on feature.
- ⁵ 11.7 months battery life based on active use of 3 hours per day.
- ⁶ Multicore is designed to improve performance of certain software products. Not all customers or software applications will necessarily benefit from use of this technology. Performance and clock frequency will vary depending on application workload and your hardware and software configurations. Intel's numbering, branding and/or naming is not a measurement of higher performance.
- ⁷ MIL STD 810H testing is not intended to demonstrate fitness for U.S. Department of Defense contract requirements or for military use. Test results are not a guarantee of future performance under these test conditions. Accidental damage requires an optional HP Accidental Damage Protection Care Pack.
- ⁸ Recharges the battery up to 90% within 90 minutes when the system is off or in standby mode, when used with the power adapter provided with the notebook, and no external devices are connected. After charging has reached 90% capacity, charging speed will return to normal. Charging time may vary +/-10% due to System tolerance.
- ⁹ Ship mode setting turns on once the battery has discharged to 2% in off state or 21 days have elapsed in off state.
- ¹⁰ Optional feature that must be configured at purchase.
- ¹¹ Wireless access point and Internet service required and sold separately. Availability of public wireless access points limited. Wi-Fi 6 is backwards compatible with prior 802.11 specs. The specifications for Wi-Fi 6 (802.11ax) are draft and are not final. If the final specifications differ from the draft specifications, it may affect the ability of the PC to communicate with other 802.11ax devices.
- ¹² Multiple-Input Multiple-Output (MIMO) is a wireless technology that uses multiple transmitters and receivers to enhance data transfer. MIMO requires a MU-MIMO router, sold separately.
- ¹³ Based on internal testing vs. previous generation product with 802.11ac wireless LAN module.
- ¹⁴ See user guide for cleaning instructions. Commonly used household cleaning solution wipes tested to 1,000 wipes include: n-Alkyl (C14, 60%; C16, 30%; C12, 5%; C18, 5%); Dimethyl Benzyl Ammonium Chloride 0.184%; n-Alkyl (C12, 68%; C14, 32%) Dimethyl Ethylbenzyl Ammonium Chloride 0.184%, other ingredients 99.632%. And solution: water, Ammonium Hydroxide, Propylene Glycol, Alkyl Polyglycoside, 2-Hexoxyethanol, fragrance.
- ¹⁵ HP Easy Clean 2.0 requires Windows 10 RS3 and will disable the keyboard, touchscreen, and clickpad only. Ports are not disabled. See user guide for cleaning instructions. Expected availability March 2020.
- ¹⁶ HP BIOSphere Gen5 is available on select HP Pro and Elite PCs. See product specifications for details. Features may vary depending on the platform and configurations.

Technical Specifications Footnotes

- ¹ Not all features are available in all editions or versions of Windows. Systems may require upgraded and/or separately purchased hardware, drivers, software or BIOS update to take full advantage of Windows functionality. Windows 10 is automatically updated, which is always enabled. ISP fees may apply and additional requirements may apply over time for updates. See <http://www.windows.com>.
- ³ Windows 10 Pro in S mode 64 works exclusively with apps from the Windows store. Some accessories and apps compatible with Windows 10 may not work, and performance may vary. Certain default settings, features, and apps cannot be changed. Easily switch to Windows 10 Pro configuration (free applies) Learn more at [Microsoft.com/Windows 10S](https://www.microsoft.com/windows/10s).
- ⁴ Multicore is designed to improve performance of certain software products. Not all customers or software applications will necessarily benefit from use of this technology. Performance and clock frequency will vary depending on application workload and your hardware and software configurations. Intel's numbering, branding and/or naming is not a measurement of higher performance.
- ⁵ Processor speed denotes maximum performance mode; processors will run at lower speeds in battery optimization mode.
- ⁶ In accordance with Microsoft's support policy, HP does not support the Windows 8 or Windows 7 operating system on products configured with Intel and AMD 7th generation and forward processors or provide any Windows 8 or Windows 7 drivers on <http://www.support.hp.com>.
- ⁷ Sold separately or as an optional feature.
- ⁸ For storage drives, GB = 1 billion bytes. TB = 1 trillion bytes. Actual formatted capacity is less. Up to 30 GB (for Windows 10) is reserved for system recovery software.
- ⁹ Not available with eMMC storage.
- ¹⁰ Wireless access point and Internet service required and sold separately. Availability of public wireless access points limited. Wi-Fi 6 is backwards compatible with prior 802.11 specs. The specifications for Wi-Fi 6 (802.11ax) are draft and are not final. If the final specifications differ from the draft specifications, it may affect the ability of the notebook to communicate with other 802.11ax devices.
- ¹¹ The term "10/100/1000" or "Gigabit" Ethernet indicates compatibility with IEEE standard 802.3ab for Gigabit Ethernet, and does not connote actual operating speed of 1 Gb/s. For high-speed transmission, connection to a Gigabit Ethernet server and network infrastructure is required.
- ¹² HD content required to view HD images.
- ¹³ 5 MP camera is sold separately or as an optional feature.
- ¹⁴ Internet access required.
- ¹⁵ Resolutions are dependent upon monitor capability, and resolution and color depth settings.
- ¹⁶ HP Support Assistant requires Windows and Internet access.
- ¹⁷ HP Driver Packs not preinstalled, however available for download at <http://www.hp.com/go/clientmanagement>.
- ¹⁸ HP Manageability Integration Kit can be downloaded from <http://www.hp.com/go/clientmanagement>.
- ¹⁹ Absolute firmware module is shipped turned off and can only be activated with the purchase a license subscription and full activation of the software agent. License subscriptions can be purchased for terms ranging multiple years. Service is limited, check with Absolute for availability outside the U.S. Certain conditions apply. For full details visit: <https://www.absolute.com/about/legal/agreements/absolute/>.
- ²⁰ HP Drive Lock & Automatic Drive Lock is not supported on NVMe drives.
- ²¹ Secure Erase for the methods outlined in the National Institute of Standards and Technology Special Publication 800-88 "Clear" sanitation method. HP Secure Erase does not support platforms with Intel® Optane™.
- ²² Firmware TPM is version 2.0. Hardware TPM is v1.2, which is a subset of the TPM 2.0 specification version v0.89 as implemented by Intel Platform Trust Technology (PTT).
- ²³ HP Sure Click is available on select HP platforms and supports Microsoft® Internet Explorer, Google Chrome, and Chromium™. Supported attachments include Microsoft Office (Word, Excel, PowerPoint) and PDF files in read only mode. Check <http://h20195.www2.hp.com/v2/GetDocument.aspx?docname=4AA7-0922ENW> for all compatible platforms as they become available.
- ²⁴ Windows Defender Opt in and Internet connection required for updates.
- ²⁵ HP BIOSphere Gen5 is available on select HP Pro and Elite PCs. See product specifications for details. Features may vary depending on the platform and configurations.
- ²⁶ HP Client Security Manager Gen5 requires Windows and is available on the select HP Pro and Elite PCs. See product specifications for details.
- ²⁸ Recharges the battery up to 90% within 90 minutes when the system is off or in standby mode. Power adapter with a minimum capacity of 65 watts is required. After charging has reached 50% capacity, charging will return to normal. Charging time may vary +/-10% due to System tolerance.
- ²⁹ Availability may vary by country.
- ³⁰ HP Services offers 1-year limited warranties and 90 day software limited warranty options depending on country. Batteries have a default one year limited warranty except for Long Life batteries which will have same 1-year or 3-year limited warranty as the platform. Refer to <http://www.hp.com/support/batterywarranty/> for additional battery information. On-site service and extended coverage is also available. HP Care Pack Services are optional extended service contracts that go beyond the standard limited warranties. To choose the right level of service for your HP product, use the HP Care Pack Services Lookup Tool at: <http://www.hp.com/go/cpc>.
- ³¹ Based on US EPEAT® registration according to IEEE 1680.1 -2018 EPEAT®. Status varies by country. Visit www.epeat.net for more information.
- ³² Miracast is a wireless technology your PC can use to project your screen to TVs, projectors, and streaming.
- ³³ FreeDOS planned to be available January 2020.
- ³⁴ All specifications represent the typical specifications provided by HP's component manufacturers; actual performance may vary either higher or lower.

Sign up for updates hp.com/go/getupdated

© Copyright 2021 HP Development Company, L.P. The information contained herein is subject to change without notice. The only warranties for HP products are set forth in the express limited warranty statements accompanying such products. Nothing herein should be construed as constituting an additional warranty. HP shall not be liable for technical or editorial errors or omissions contained herein.

Intel, Celeron, Pentium, Optane and Intel vPro are trademarks or registered trademarks of Intel Corporation or its subsidiaries in the United States and other countries. Bluetooth is a trademark owned by its proprietor and used by HP Inc. under license. USB Type-C™ and USB-C™ are trademarks of USB Implementers Forum. ENERGY STAR is a registered trademark of the U.S. Environmental Protection Agency. All other trademarks are the property of their respective owners.

September 2021

