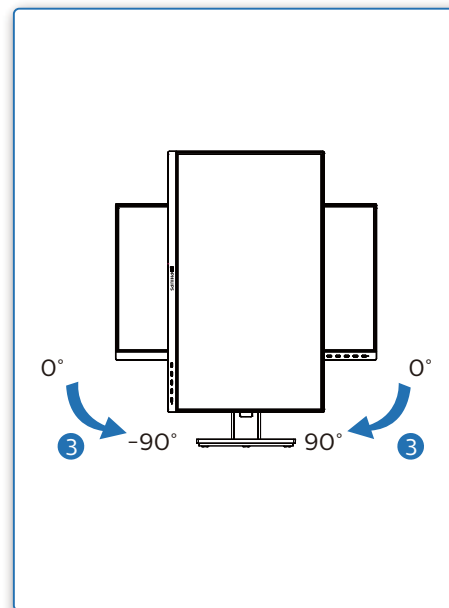
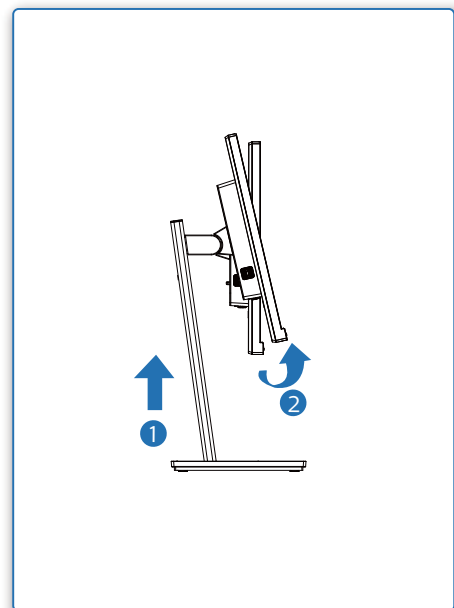
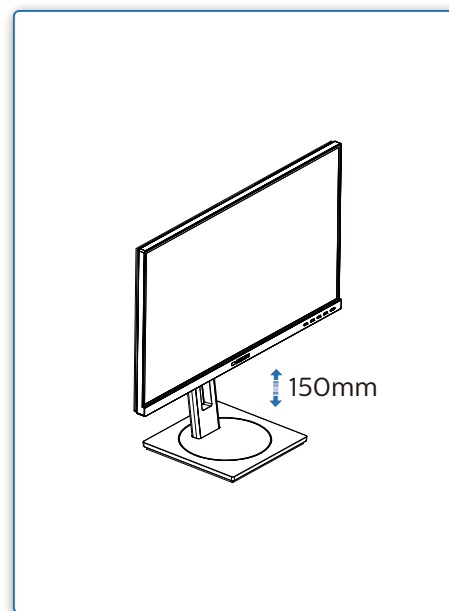
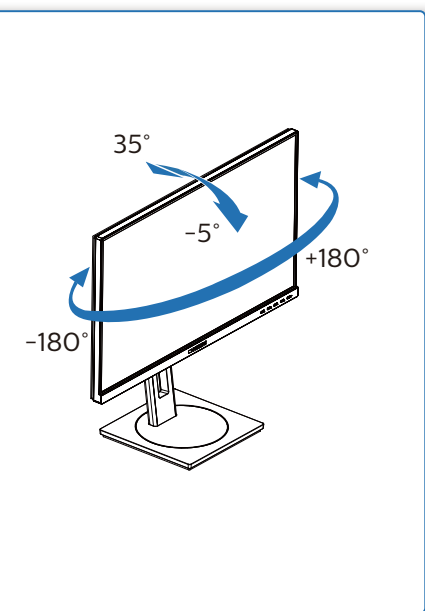
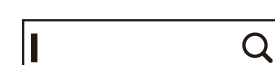


4



Register your product and get support at  
[www.philips.com/support](http://www.philips.com/support)



FAQ

Software  
SmartControlUser  
Manual

Version: M10278BQ1T

2021 © TOP Victory Investments Ltd. All rights reserved.

This product has been manufactured by and is sold under the  
 responsibility of Top Victory Investments Ltd., and Top Victory  
 Investments Ltd. is the warrantor in relation to this product.  
 Philips and the Philips Shield Emblem are registered trademarks  
 of Koninklijke Philips N.V. and are used under license.

Specifications are subject to change without notice.

**HDMI**

The terms HDMI, HDMI High-Definition Multimedia  
 Interface, and the HDMI Logo are trademarks or  
 registered trademarks of HDMI Licensing  
 Administrator, Inc.

[www.philips.com](http://www.philips.com)

Energy Labelling

278B1



Printed in China



H41G78S281342D

**PHILIPS**

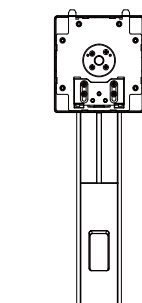
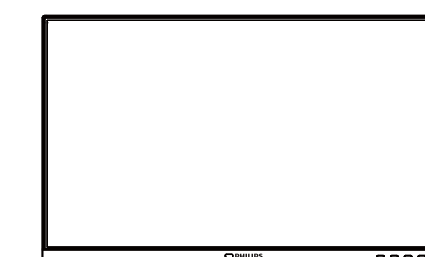
B Line

278B1

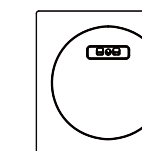


# Quick Start

Register your product and get support at  
[www.philips.com/welcome](http://www.philips.com/welcome)



Power



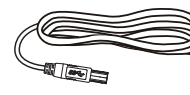
\*CD



\* DP



\*HDMI

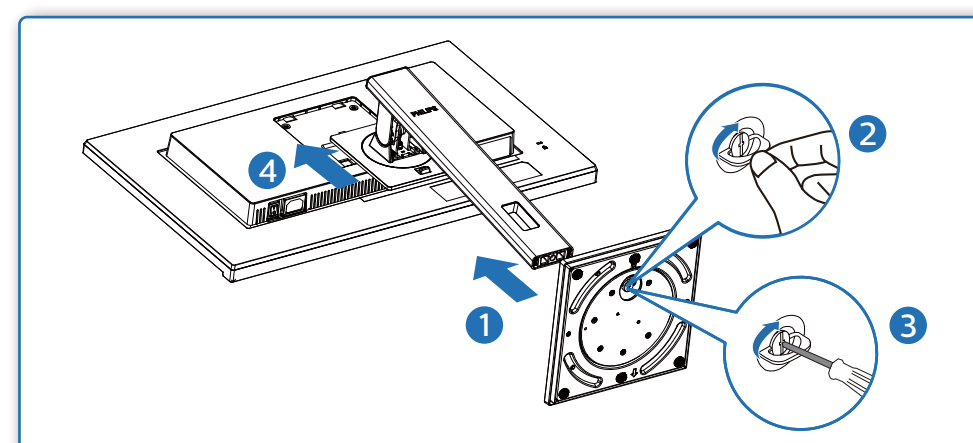


\*USB A-B(278B1)

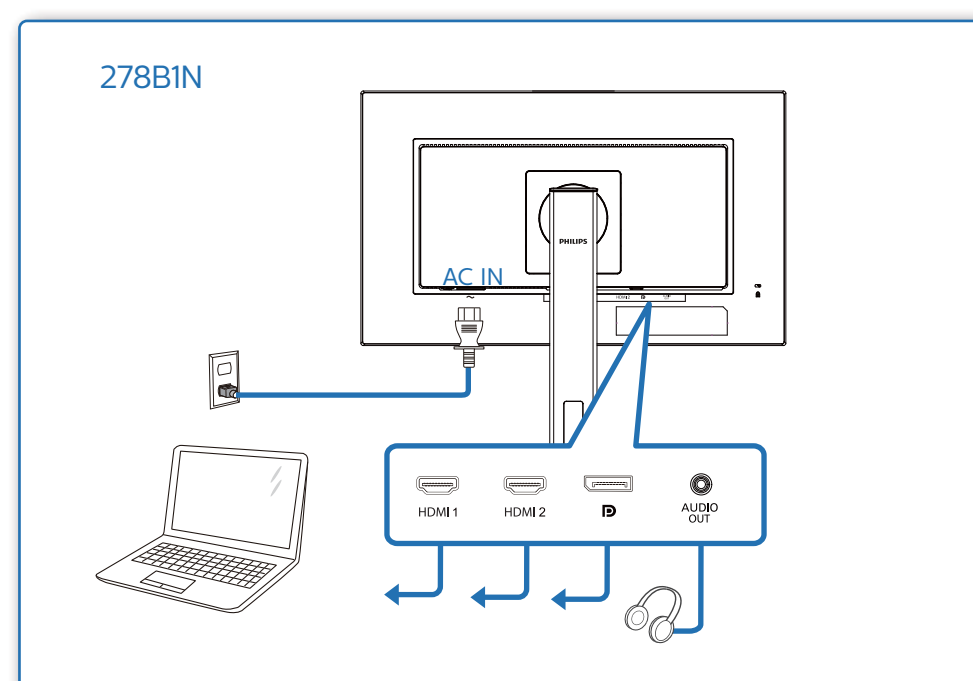
\*Different according to region

Display design may differ from that illustrated

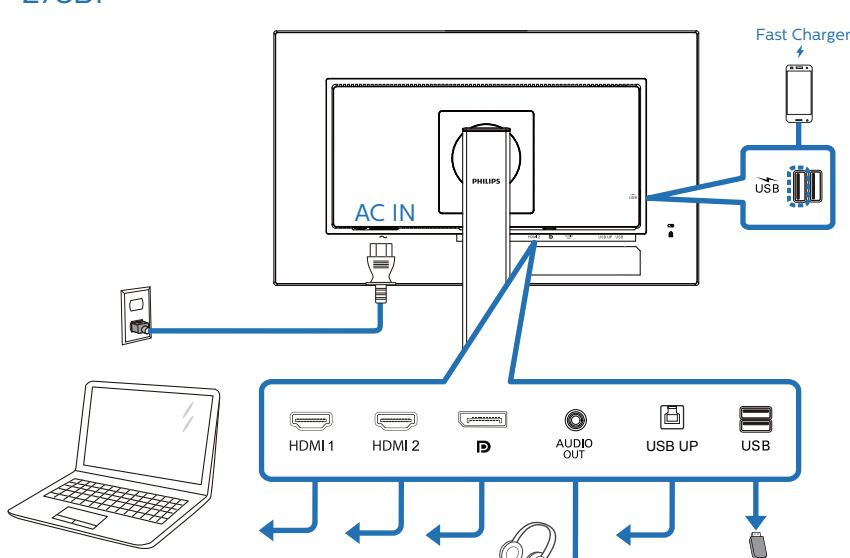
1



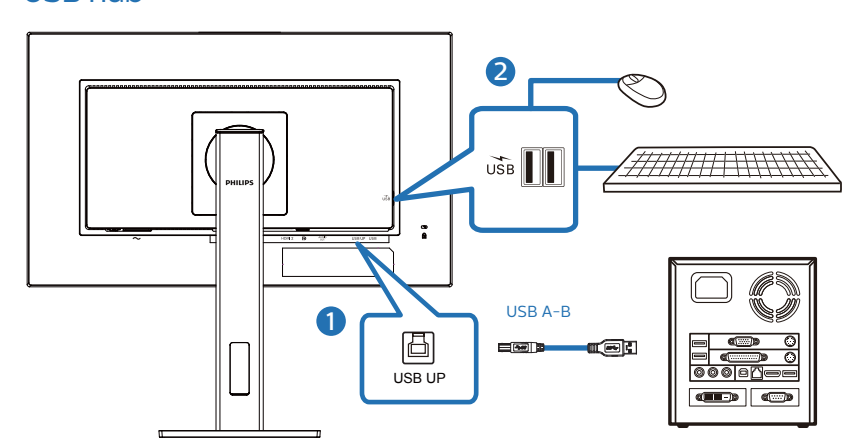
2



278B1



USB hub



3

