


**Jabra** GN

## Jabra Biz Series Corded Headsets

The Biz Series offers a range of professional corded headsets with great sound, designed for call center agents, customer service advisors and others who listen and talk to customers for a living.

### Crystal clear conversations

Noisy workplaces can make calls a struggle for agents and customers. Biz Series headsets take noise out of the equation, helping you focus on the conversation. HD Voice technology and noise-cancelling microphones ensure crystal clear sound quality at both ends of the call for a more professional customer experience.

### All day comfort

Biz Series headsets are made for all day wear, with ergonomically designed frames, lightweight design and super soft foam or leatherette ear cushions. Headbands and microphone booms can be adjusted for comfort.

### Tough design

High-performing contact centers and other call-intensive environments need headsets that can survive countless hours of use. The Biz Series headsets are highly durable, with an adjustable boom-arm that can be rotated without the risk of breaking.

### Easy to deploy and manage

Biz Series headsets are optimized for use with all leading desk phone systems and Unified Communications platforms.<sup>1</sup> Jabra Xpress enables you to easily configure all of your company's audio devices from one central point.<sup>2</sup>

### Extensive range

Biz Series headsets are available in QD versions for your desk phone or USB versions for your computer, and in Mono and Duo versions.

Works with:



desk phone and softphone

Certified:



**GN** Making Life Sound Better

### Jabra Biz 1500

- **Quality sound**  
Noise cancelling microphone for truly professional sound
- **Easy to control**  
Durable build with volume control unit and mute for USB version
- **All day comfort**  
Foam cushions and 270° flexible spin boom arm

**Professional, durable and comfortable**



### Jabra Biz 2300

- **Crystal clear sound**  
Breath resistant microphone with noise cancellation
- **Advanced build**  
Durable reinforced cord and programmable buttons for USB variant<sup>3</sup>
- **Superior comfort**  
20% lighter than competitors with padded ear cushions and 360° flexible spin boom arm

**All day wearing comfort**



### Jabra Biz 2400 II

- **World-class sound**  
Breath resistant microphone with noise cancellation
- **Best in class build quality**  
Reinforced cord and programmable buttons for USB variant<sup>3</sup>
- **Ultimate comfort**  
40% lighter than competitors, soft pouch leatherette ear cushions, headphone padding and 360° flexible spin boom arm

**Best in class quality and lightest in its class**

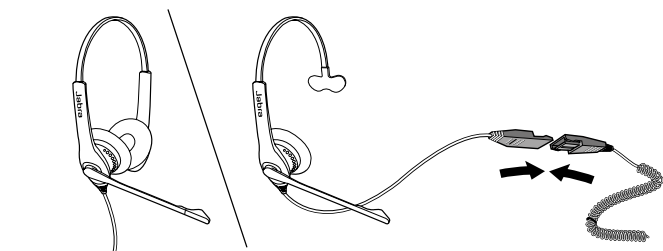


<sup>1</sup> Applies to Biz 2300 and Biz 2400 II only. Excludes Biz 1500.

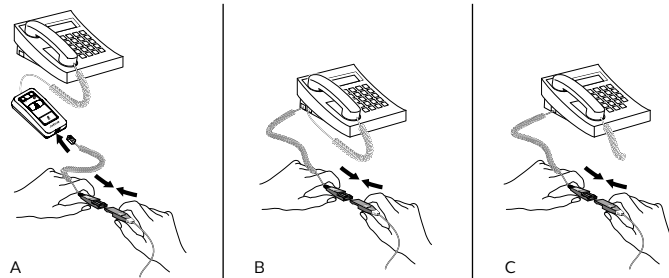
<sup>2</sup> Go to [Jabra.com/xpress](http://Jabra.com/xpress)

<sup>3</sup> Programmable buttons increase user efficiency by supporting applications including the Jabra Contact Center Agent App for Cisco Finesse and Push-To-Talk functionality.

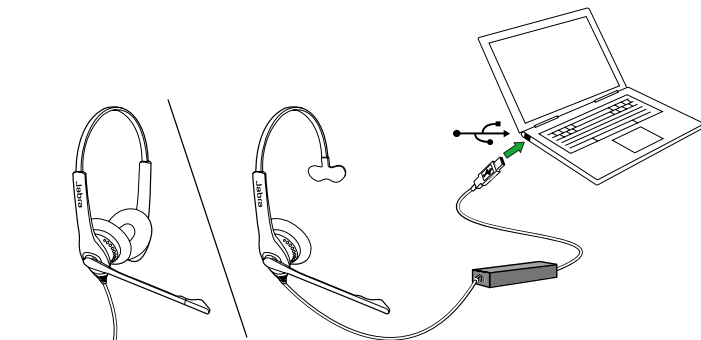
## 01 How to connect



Duo or mono models with QD connectivity



QD connectivity

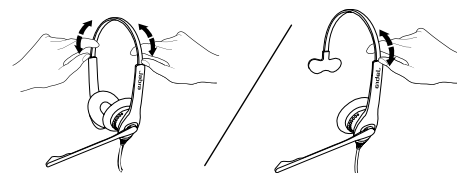


Duo or mono models with USB connectivity simply plug into the USB port on your PC

## 02 How to use



Adjustable headband available for both duo and mono versions



## Features and specifications



Jabra Biz 1500

Jabra Biz 2300

Jabra Biz 2400 II

Work Space	<input type="checkbox"/> At office desk	•	•	•
	<input type="checkbox"/> Desk phone <sup>1</sup>	•	•	•
Connectivity	<input type="checkbox"/> Softphone	•	• <sup>2</sup>	•
	<input type="checkbox"/> Breath resistant mic		•	•
Sound	<input type="checkbox"/> QD - Wideband up to 4.5khz	•	•	•
	<input type="checkbox"/> QD - Wideband up to 6.8khz		•	•
	<input type="checkbox"/> USB - Wideband up to 6.8khz	•	•	•
	<input type="checkbox"/> USB - Hi-Fi sound up to 16khz		•	•
Comfort/ Wearing Style	<input type="checkbox"/> Ear cushions	Foam	Foam and leatherette	Leatherette
	<input type="checkbox"/> Flexible spin boom arm	270°	360°	360°
	<input type="checkbox"/> Headband padding			•
	<input type="checkbox"/> Headband	•	•	•
	<input type="checkbox"/> Earhook (Mono only)			•
	<input type="checkbox"/> Neckband (Mono only)			•
	<input type="checkbox"/> Mono/Duo	•	•	•
Cable	<input type="checkbox"/> Corded	•	•	•

<sup>1</sup> All QD headsets require a connection cable (Jabra Link 180, 230, 260, 260 MS, 265 or Jabra Link 280)

<sup>2</sup> USB-A and USB-C variants available