

EPOS



# IMPACT 1000 Series

IMPACT 1000 is designed for the New Open Office environment. Built on EPOS BrainAdapt™ technology to reduce brain fatigue with adaptive ANC and industry-leading voice pickup powered by EPOS AI™, making sure you're getting your message through.



red dot winner 2023



We are rebranding from EPOS | SENNHEISER to EPOS branding on our products.  
During the transition period the same product may exist in both versions



# Key Features

## Stay comfortable throughout the day

Lightweight design, soft breathable cushions, and headband padding allow for all-day wearing comfort in the open office.

## Protect your brain in the open office

Hybrid adaptive ANC effectively shuts down noise and helps your brain focus – even in busy open office environments.

## Industry-leading voice pickup for focused conversations

Adaptive microphone technology powered by EPOS AI™ makes sure you're getting your message through.

## A new market standard for open office headsets

Experience a superior open office headset with super wideband and stereo sound. Meets Microsoft Teams Open Office requirements.

## Experience true convenience

Wireless charging stand and smart features make using the headset truly intuitive and hassle-free.

# What's in the Box

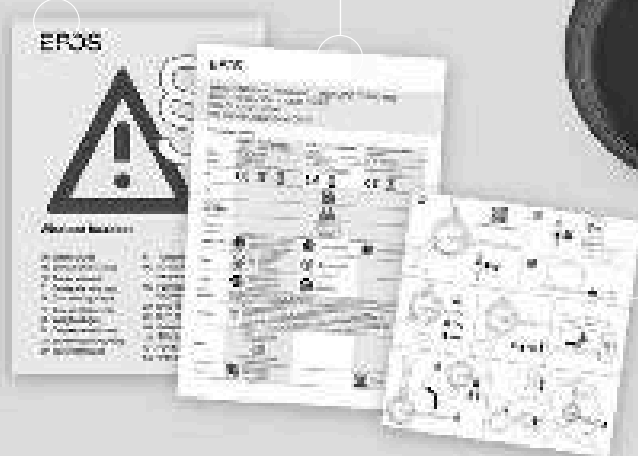
Soft Carry Pouch

BTD 800a Dongle



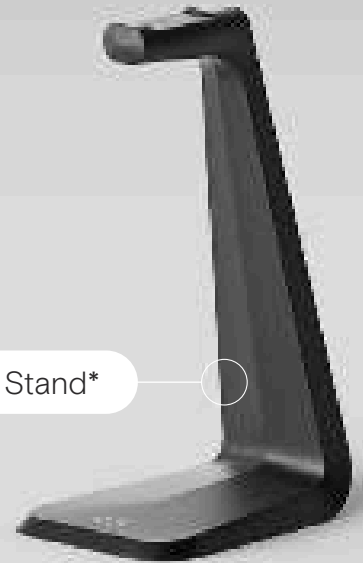
Safety Guide

Compliance Sheet



Quick Guide

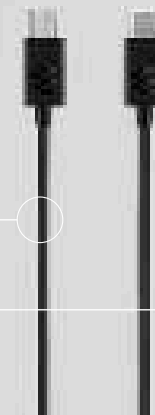
CH 40 Charging Stand\*



IMPACT 1000



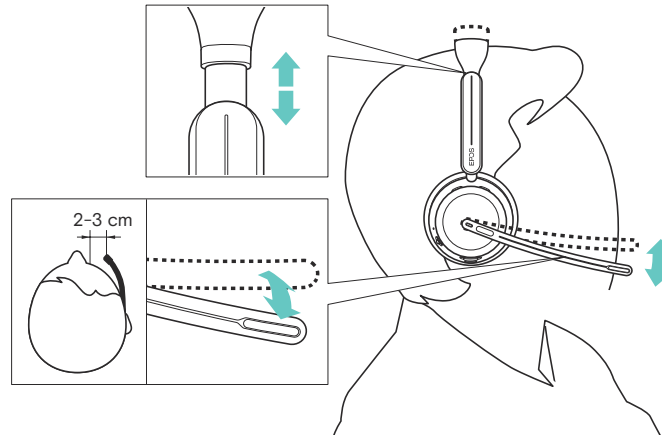
USB-C to USB-C Cable



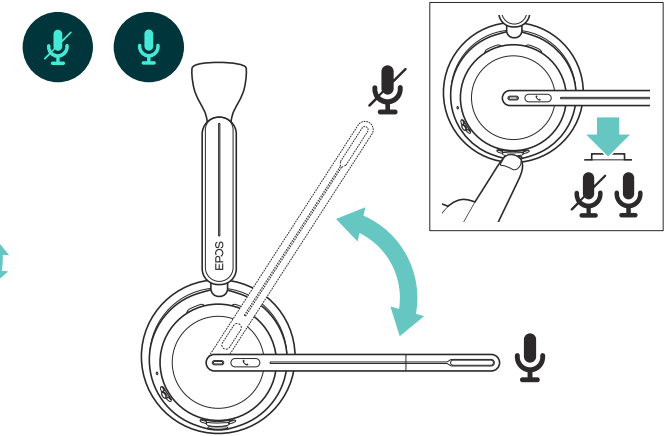
\* Included in 1061, 1061T, 1061 ANC, 1061T ANC

# How to Use the IMPACT 1000

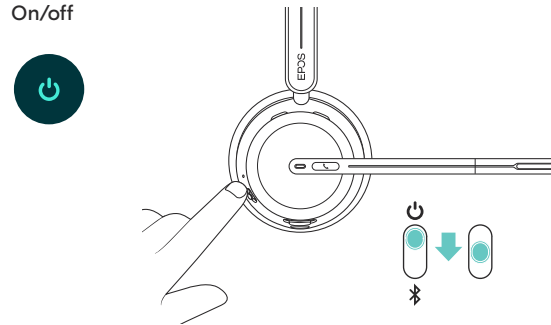
## Adjusting and wearing the headset



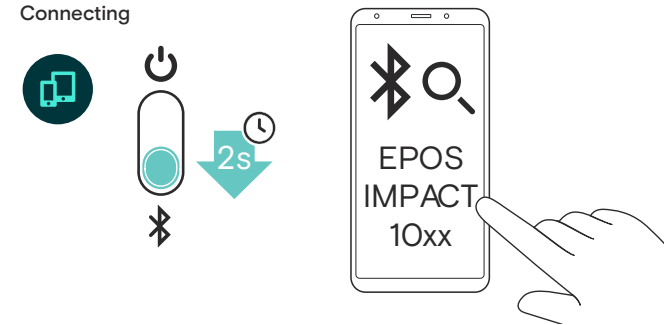
## Mute/unmute



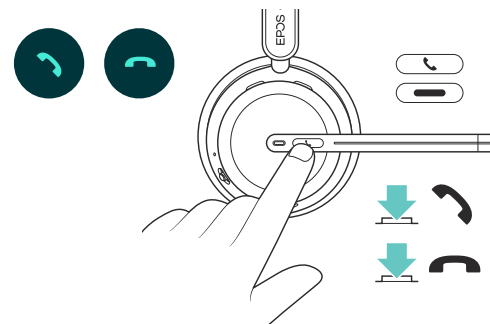
## On/off



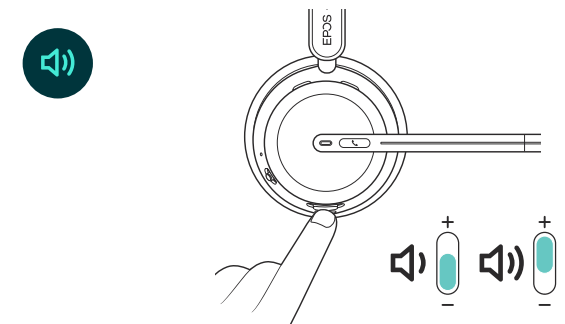
## Connecting



## Accept/end a call



## Adjusting the volume



# Additional benefits & features

**Superior EPOS sound**

Super wideband audio and stereo sound deliver clear speech in noisy open offices

**Triple connectivity**

Stay connected wirelessly with up to three devices at the same time

**Wireless charging stand**

Charge your headset easily without the hassle of wires and plugs

**EPOS BrainAdapt™ technology**

Better focus for both sides via ANC, EPOS AI™, and industry-leading voice pick-up

**TalkThrough**

Communicate easily with in-office colleagues without removing the headset

**Smart features**

Initiate, end, and mute calls by moving the boom arm or taking the headset on/off

**Adaptive digital microphones**

Adaptive microphone technology delivers industry-leading voice pickup

**360-degree busylight**

Intuitive busylight clearly signals when you're on call and not to be disturbed

**Convenient carry pouch**

Let's you easily carry the headset between your work and home office

# Product data

1/3

General

Wearing style	Headband -single and double-sided variants
Headset weight	Double-sided with ANC: 181 g / 6.38 oz Double-sided: 171 g / 6.03 oz Single-sided: 114 g / 4.02 oz
Connectivity	Bluetooth® 5.3, USB-C to USB-C cable, USB-A dongle
Warranty	2 years

Audio

Speaker frequency response	20 Hz – 20 KHz
Microphone type	4 digital MEMS
Microphone frequency response	100 Hz – 16 KHz
Active Noise Cancellation	Yes. Hybrid, Adaptive
Bandwidth in call mode (Speaker + Mic)	Super Wideband

# Product data

2/3

## Products variants

IMPACT 1030/1030T

IMPACT 1060/1060 ANC/1060T/1060T ANC

IMPACT 1061/1061T/1061 ANC/1061T ANC

## Software

EPOS devices can be managed with following Software solutions:

EPOS Connect

EPOS Manager

## What's in the box

Single-sided headset, soft carry pouch, Bluetooth® USB dongle (BTD 800a), USB-C Cable (1.2m), Safety & Compliance sheet

Double-sided headset, soft carry pouch, Bluetooth® USB dongle (BTD 800a), USB-C Cable (1.2m), Safety & Compliance sheet.

Double-sided headset, soft carry pouch, Bluetooth® USB dongle (BTD 800a), USB-C Cable (1.2m), Safety & Compliance sheet. Wireless charging stand (CH 40).

Conduct firmware updates and configure headsets for personal audio preferences.  
EPOS Connect works for Windows, Mac® and VDI/Thin client environments: [eposaudio.com/software-epos-connect](https://eposaudio.com/software-epos-connect)

Manage, update and configure EPOS audio devices from any location.  
For both cloud and on-premises solutions: [eposaudio.com/software-epos-manager](https://eposaudio.com/software-epos-manager)

Product data

3/3

Product	Connects to	Certifications	EAN code	UPC code
IMPACT 1060 ANC Art. no. 1001130	Softphone/PC and mobile devices	Optimized for UC. Certified for Google Meet	57 14708 00932 0	8 40064 40932 2
IMPACT 1061 ANC Art. no. 1001131	Softphone/PC and mobile devices	Optimized for UC. Certified for Google Meet	57 14708 00933 7	8 40064 40933 9
IMPACT 1030 Art. no. 1001132	Softphone/PC and mobile devices	Optimized for UC. Certified for Google Meet	57 14708 00934 4	8 40064 40934 6
IMPACT 1060 Art. no. 1001134	Softphone/PC and mobile devices	Optimized for UC. Certified for Google Meet	57 14708 00936 8	8 40064 40936 0
IMPACT 1061 Art. no. 1001135	Softphone/PC and mobile devices	Optimized for UC. Certified for Google Meet	57 14708 00937 5	8 40064 40937 7
IIMPACT 1060T ANC Art. no. 1001136	Softphone/PC and mobile devices	Optimized for UC. Certified for Microsoft Teams	57 14708 00938 2	8 40064 40938 4
IMPACT 1030T Art. no. 1001137	Softphone/PC and mobile devices	Optimized for UC. Certified for Microsoft Teams	57 14708 00939 9	8 40064 40939 1
IMPACT 1060T Art. no. 1001138	Softphone/PC and mobile devices	Optimized for UC. Certified for Microsoft Teams	57 14708 00940 5	8 40064 409407
IMPACT 1061T ANC Art. no. 1001171	Softphone/PC and mobile devices	Optimized for UC. Certified for Microsoft Teams	57 14708 00975 7	8 40064 40975 9
IMPACT 1061T Art. no. 1001173	Softphone/PC and mobile devices	Optimized for UC. Certified for Microsoft Teams	57 14708 00977 1	8 40064 40977 3



# Spare parts

1/1

Product	Art. no.	Description	EAN code	UPC code
CH 40	1001139	Wireless Charging stand. USB C	57 14708 00941 2	8 40064 40941 4

# Appendix

1/1

**Additional product data**

EPOS ActiveGard® technology	Protects users against acoustic injury caused by sudden sound burst on the line
EU Noise at Work limiter*	Enhanced audio protection preventing listening fatigue, average 85 dB over a workday
EPOS Voice™ technology	For a clear and natural listening experience
Talk time (hours)	ANC ON: 19 hours ANC Off: 20 hours
Charging time	With cable: 1.5 hours Wireless charging: 2.5 hours
Standby time	ANC ON: 50 hours ANC OFF: 300 hours
Wireless Range	Up to 30 m / 100 ft
Multipoint Connectivity	Triple Connectivity
Busylight	Yes, 360-degree

\* In compliance with EU Noise at Work legislation (Directive 2003/10/EC), that sets limits for two types of noise in the workplace: Acoustic burst and Sustained noise.